

PLATO REFLECTED ON
PARALLEL REALITIES,
RESULTING IN PLATONISM.



PLATONISM PROPOSES THAT THE OUTER LAYERS OF REALITY ARE IMPERFECT SHADOWS OF A HEAVENLY NUCLEUS.



WHILE THERE IS ONE CORE REALITY THAT IS PERFECT.



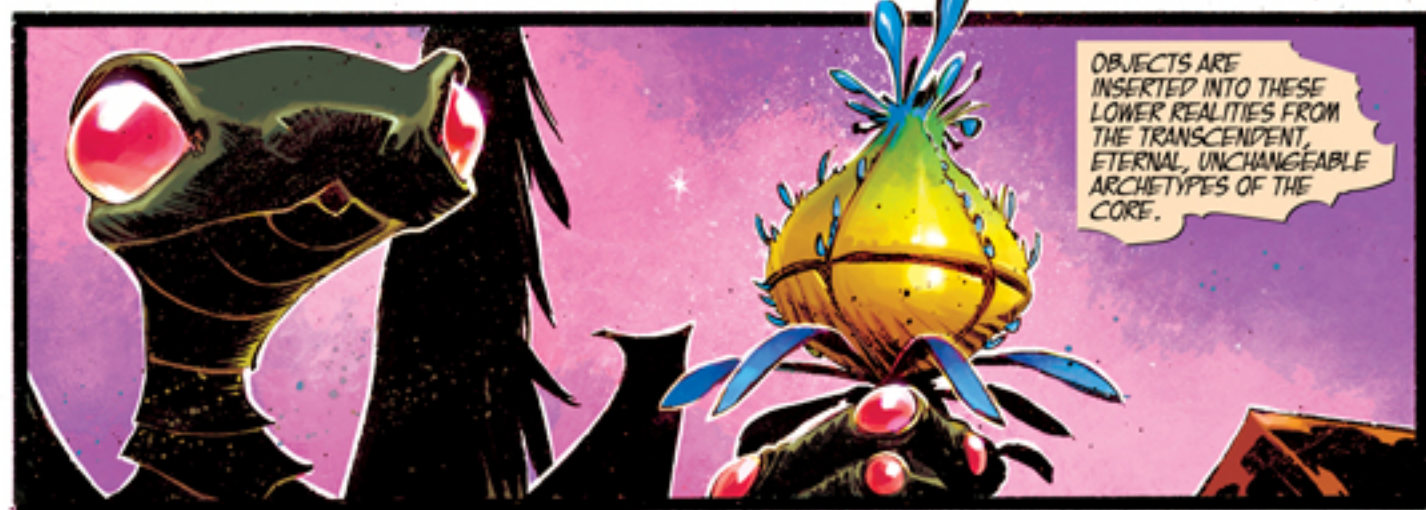
THE LOWER REALITIES ARE ALL SIMILAR...



...BUT WITH INDIVIDUAL FLAWS.

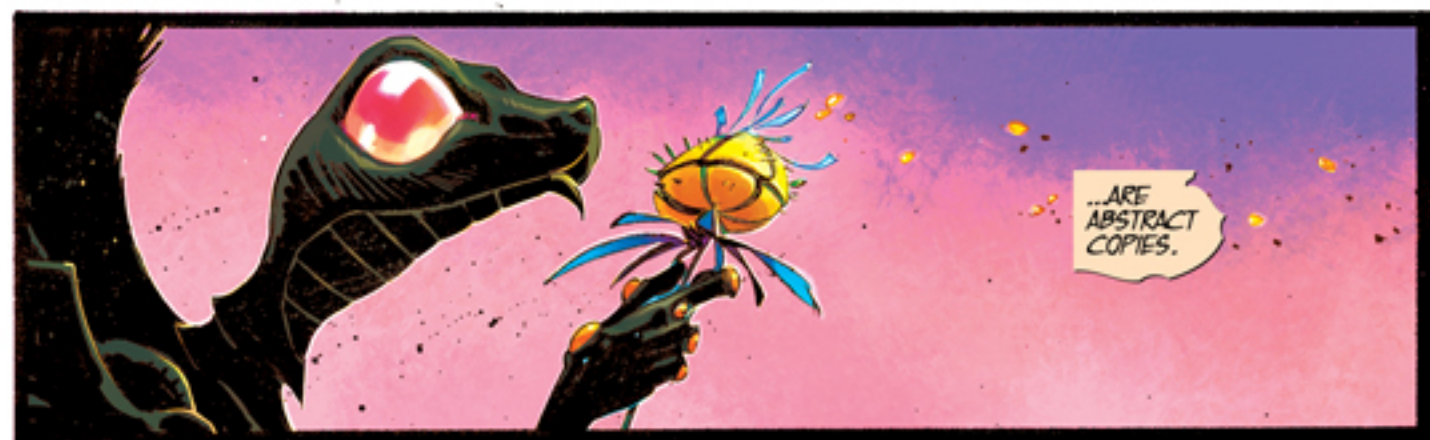


OBJECTS ARE INSERTED INTO THESE LOWER REALITIES FROM THE TRANSCENDENT, ETERNAL, UNCHANGEABLE ARCHETYPES OF THE CORE.

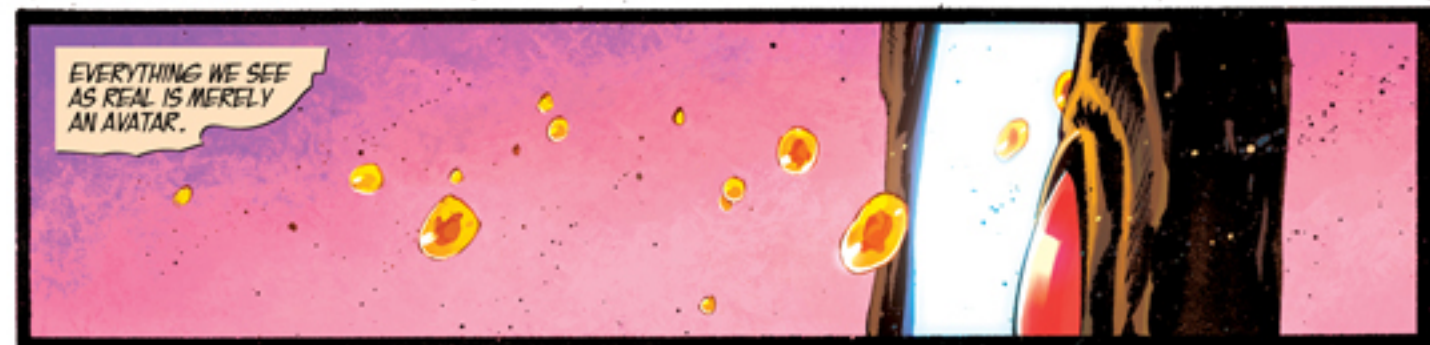




OUR EVERYDAY WORLDS...



...ARE
ABSTRACT
COPIES.



EVERYTHING WE SEE
AS REAL IS MERELY
AN AVATAR.



SYMBOLS USED TO
REPRESENT TIMELESS
ENTITIES THAT EXIST
ENTIRELY INDEPENDENT
OF OUR PHYSICAL WORLD.

SYMBOLS OF THE
PERFECT ORIGINALS.

