

YOE
COMICS
IDW
\$4.99

Popeye



• Classic Comics •

THIMBLE THEATRE PRESENTS

POPEYE

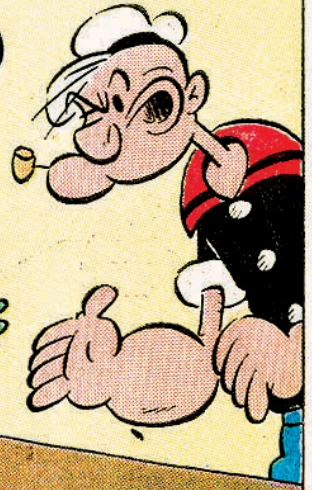
IN

MOON PLANT!

By Bud Sagendorf

AHOY, YA CRAZY MOON PLANT!
DOES YA STILL FEEL THE
SAME WAY?

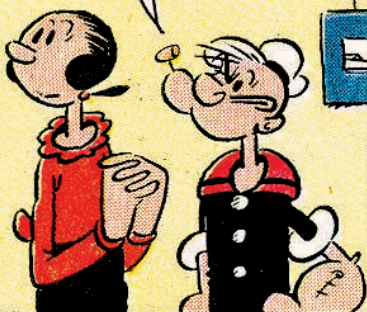
YEP!!
I STILL
LOVES
OLIVE!



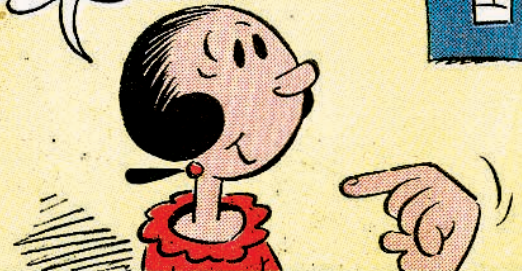
WHAT'S WRONG WITH YA, WOMAN?
YA IS ACTIN' STRANGE!!

I DON'T
KNOW?

?



I'VE HAD THE WEIRDEST FEELING FOR
DAYS!! I FEEL LIKE A PROSPECTOR
MUST FEEL WHEN HE'S ABOUT TO
STRIKE GOLD!



POPEYE #64-623

I JUST KNOW I'M GOING TO
MARRY A MILLIONAIRE!!

'ATS UNTRUE!!
YA IS ME
SWEETY!!



Reprinted from *Popeye* #64, April-June 1962. Written and drawn by Bud Sagendorf.

Thanks! Greg Goldstein, Chuck Anders, Giovanna Anzaldi, and Donnie Pitchford. Hooray for our supporters, the Popeye Fan Club: popeyethesailor.com

Published by: Ted Adams.

Editors: Ted Adams, Clizia Gussoni, and Craig Yoe.

IDW

YOE BOOKS!

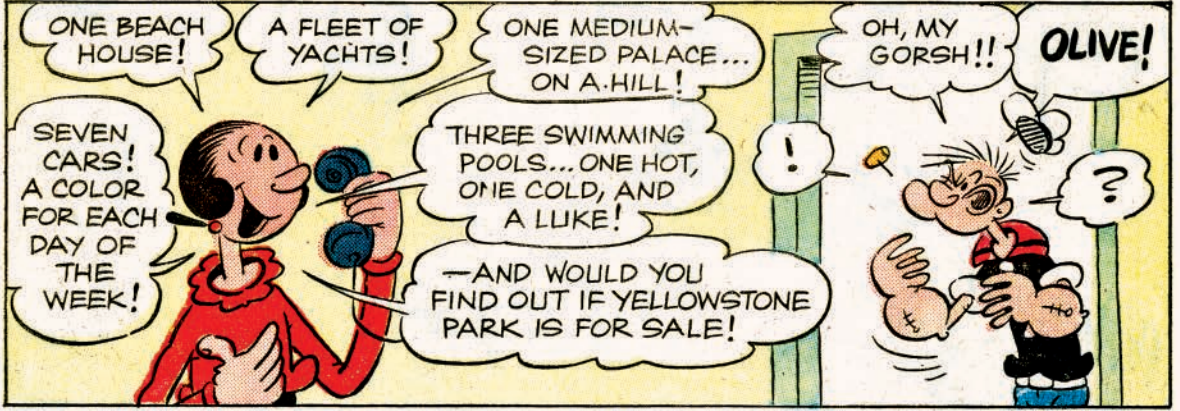
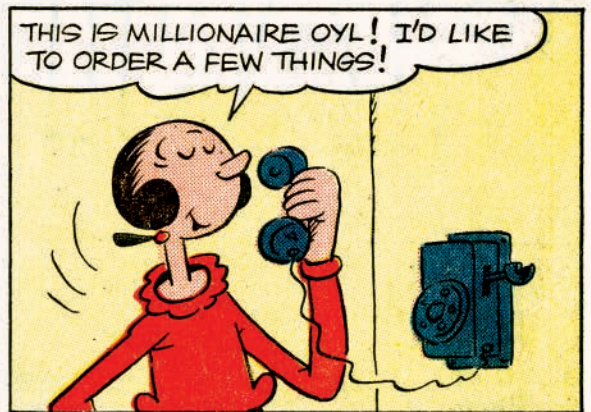
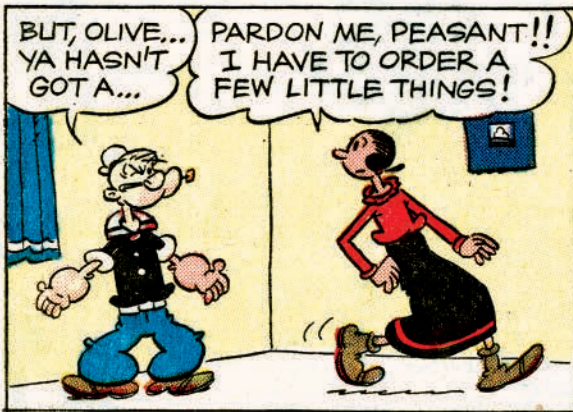
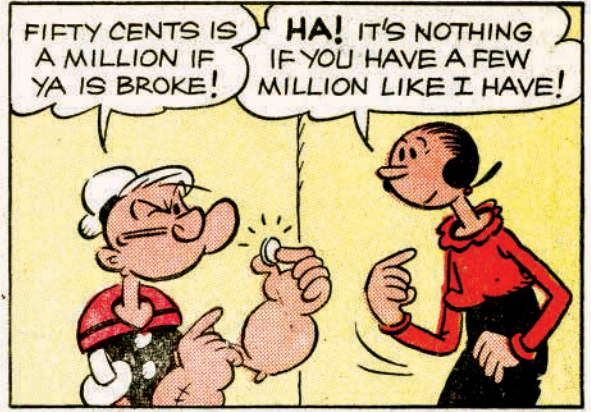
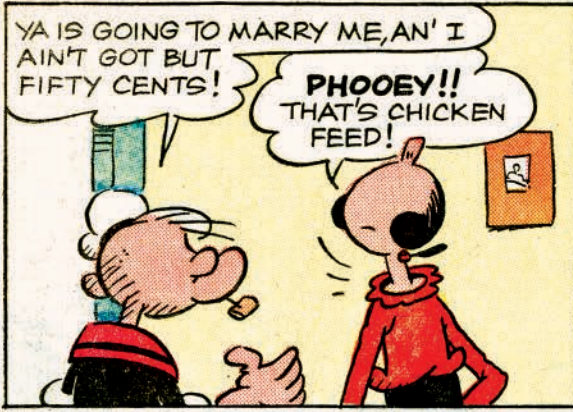
Visit:

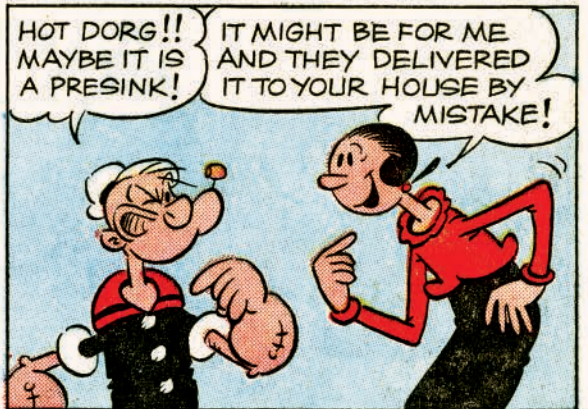
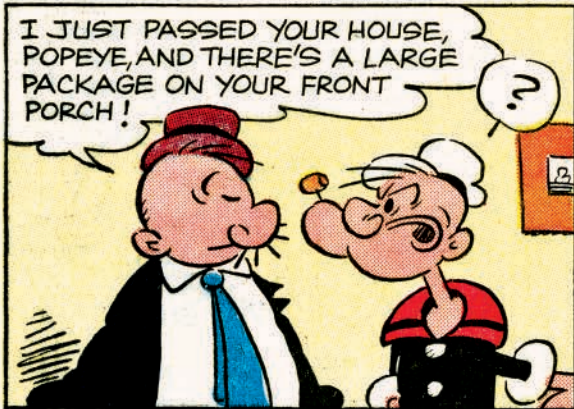
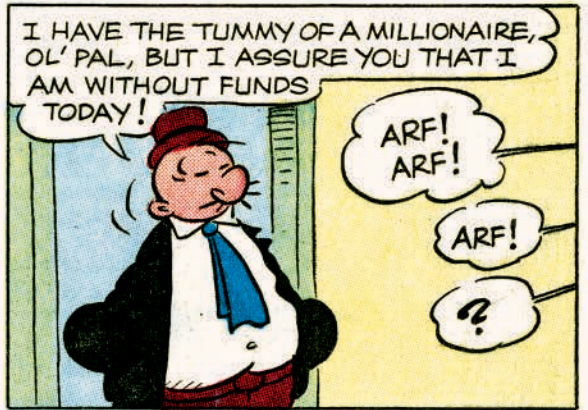
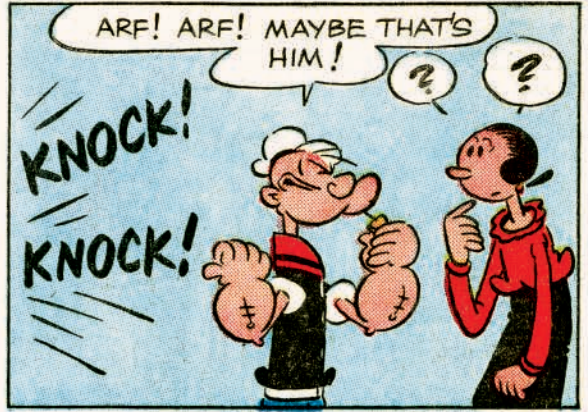
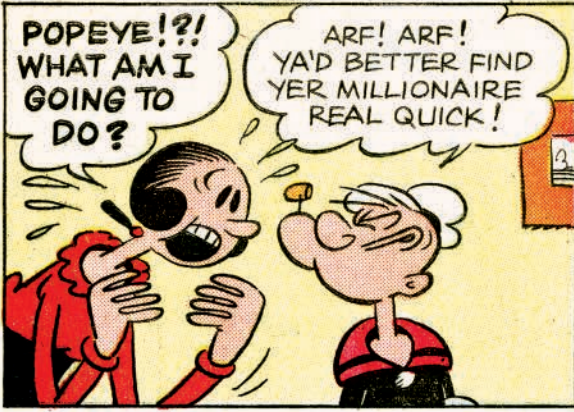
www.idwpublishing.com

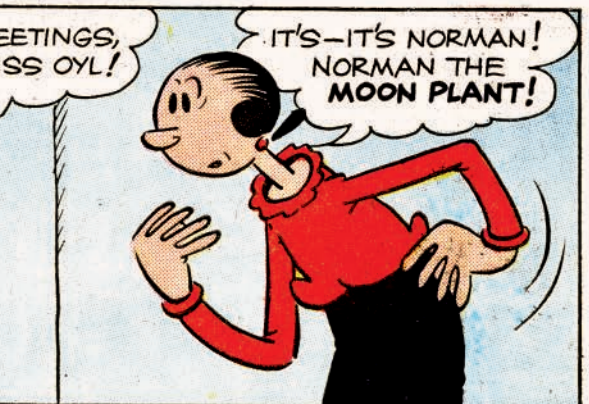
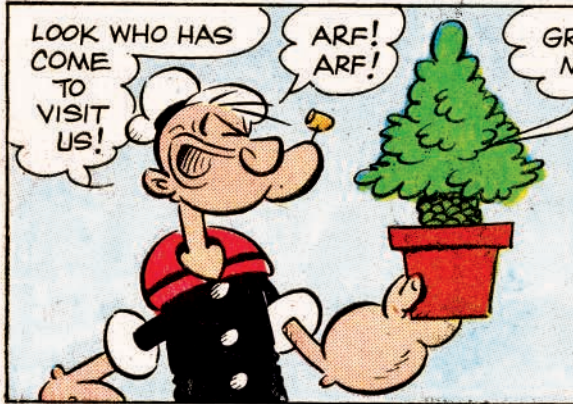
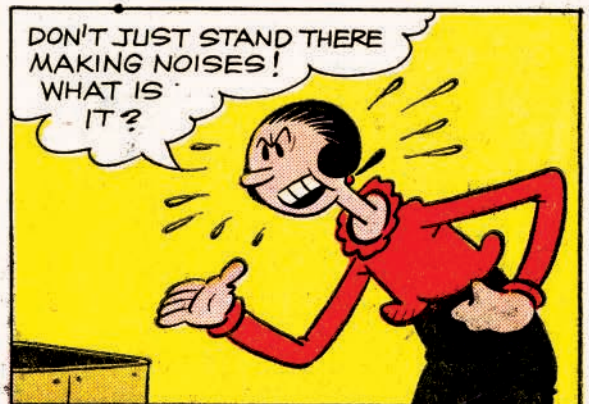
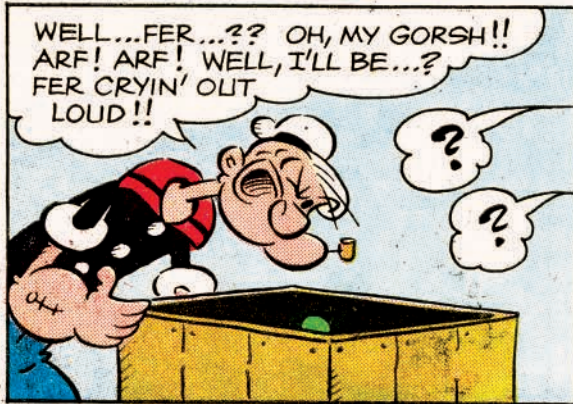
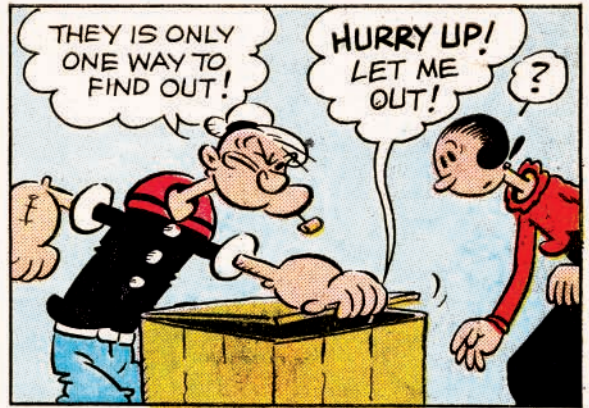
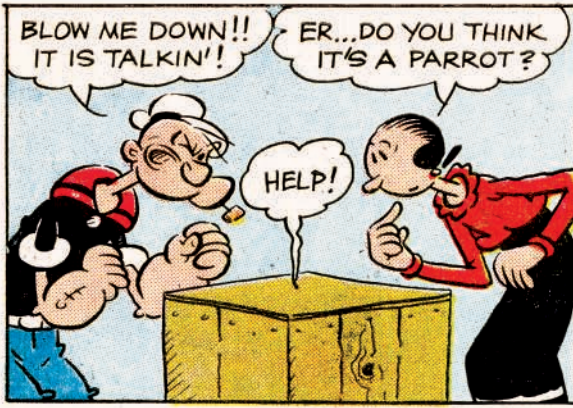
www.yoebooks.com

CLASSIC POPEYE #64. NOVEMBER 2017. FIRST PRINTING. Popeye © 2017 King Features Syndicate. TM Hearst Holdings, Inc. © 2017 Gussoni-Yoe Studio, Inc. All Rights Reserved, including the digital remastering of the material not held by copyright owners. Yoe Books is a trademark of Gussoni-Yoe Studio, Inc. Yoe is a registered trademark of Gussoni-Yoe Studio, Inc. IDW Publishing, a division of Idea and Design Works, LLC. Editorial offices: 2765 Truxtun Rd, San Diego, CA 92106. The IDW logo is registered in the U.S. Patent and Trademark Office. Any similarities to persons living or dead are purely coincidental. With the exception of artwork used for review purposes, none of the contents of this publication may be reprinted without the permission of Idea and Design Works, LLC. Printed in Korea.

IDW Publishing does not read or accept unsolicited submissions of ideas, stories, or artwork.







**SPECIAL INFORMATION
NOTE TO THE READER:**

THE MOON PLANT IS A RARE MOON VEGETABLE BROUGHT TO EARTH BY A PROFESSOR FRIEND OF POPEYE'S—THE MOON PLANT IS HIGHLY INTELLIGENT AND HAS THE POWER OF SPEECH—IT ALSO HAS MANY OTHER STRANGE AND WONDERFUL POWERS, AS YOU WILL SEE...

I CAN TALK!

I CAN SING!

I CAN DO ANYTHING!



