

IDW
ISSUE
2
\$3.99

JOHNSON • SHASTEEN • MASTRODONARDO

STAR TREK

BOLDLY GO



Handwritten signature

STAR TREK®

BOLDLY GO



written by

Mike Johnson

art by

Tony Shasteen

colors by

Davide Mastrolonardo

letters by

AndWorld Design

production design by

Neil Uyetake

edits by

Sarah Gaydos & Chris Cerasi

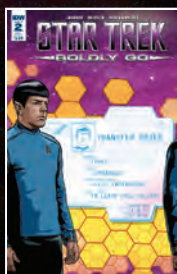
publisher

Ted Adams

Months after the events of *Star Trek Beyond*, the crew of the *U.S.S. Enterprise* has been re-assigned to new ships and new roles. Responding to a distress call from the *U.S.S. Concord*, Captain Kirk and the *U.S.S. Endeavour* arrive to find the ship in pieces. A few survivors are rescued, including the *Concord*'s first officer, Hikaru Sulu. The attackers had only one message: **Resistance Is Futile.**



Regular Cover
Art by George Caltsoudas



Subscription Cover
Art by Tony Shasteen



Retailer Incentive
Photo Cover A



Retailer Incentive
Cover B
Art by Marc Laming
Colors by Mark Roberts

STAR TREK created by Gene Roddenberry
Special thanks to Risa Kessler and John Van Citters of CBS Consumer Products for their invaluable assistance.

For international rights, contact licensing@idwpublishing.com

IDW
www.IDWPUBLISHING.com

Ted Adams, CEO & Publisher • Greg Goldstein, President & COO • Robbie Robbins, EVP/Sr. Graphic Artist • Chris Ryall, Chief Creative Officer • David Hedgecock, Editor-in-Chief • Laurie Windrow, Senior Vice President of Sales & Marketing • Matthew Ruzicka, CPA, Chief Financial Officer • Dirk Wood, VP of Marketing • Lorelei Bunjes, VP of Digital Services • Jeff Webber, VP of Licensing, Digital and Subsidiary Rights • Jerry Bennington, VP of New Product Development

Facebook: [facebook.com/idwpublishing](https://www.facebook.com/idwpublishing) • Twitter: [@idwpublishing](https://twitter.com/idwpublishing) • YouTube: [youtube.com/idwpublishing](https://www.youtube.com/idwpublishing)
Tumblr: tumblr.idwpublishing.com • Instagram: [instagram.com/idwpublishing](https://www.instagram.com/idwpublishing)



STAR TREK: BOLDLY GO #2, NOVEMBER 2016, FIRST PRINTING. ® & © 2016 CBS Studios Inc. STAR TREK and related marks are trademarks of CBS Studios Inc. © 2016 Paramount Pictures Corporation. All Rights Reserved. IDW Publishing authorized user. © 2016 Idea and Design Works, LLC. All Rights Reserved. IDW Publishing, a division of Idea and Design Works, LLC. Editorial offices: 2765 Truxtun Rd., San Diego, CA 92106. Any similarities to persons living or dead are purely coincidental. With the exception of artwork used for review purposes, none of the contents of this publication may be reprinted without the permission of Idea and Design Works, LLC. Printed in USA. IDW Publishing does not read or accept unsolicited submissions of ideas, stories, or artwork.

"THEY CALLED
THEMSELVES
THE BORG."

"THEY
LOCKED US IN A
TRACTOR BEAM
IMMEDIATELY."

"THEY STARTED...
CARVING US UP."

"WHEN WE
FIRED BACK—"

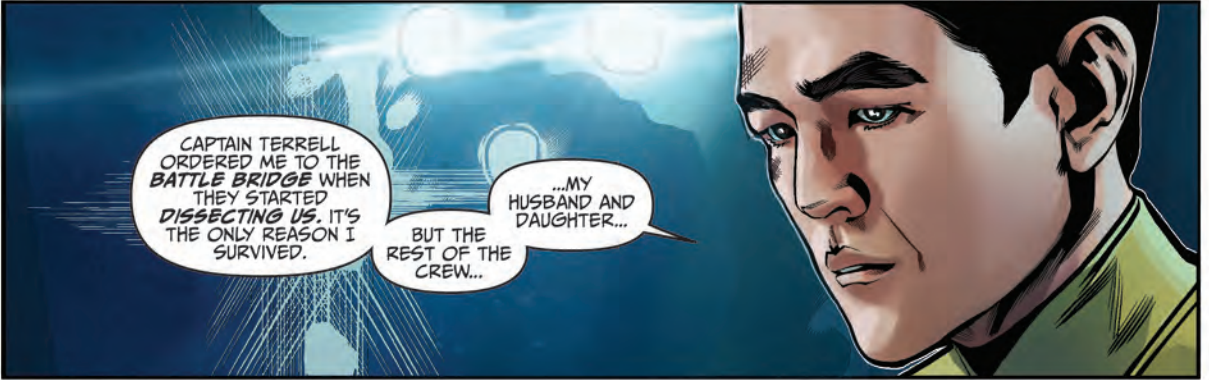
"THEY TOOK
THE ENTIRE
SAUCER SECTION—"

THE U.S.S. ENDEAVOUR. SICKBAY.



—AND THEN THEY WERE GONE.

WE'RE FOLLOWING A MAGNETIC RESONANCE TRACE WE PICKED UP. WE'LL CATCH THEM, SULU.



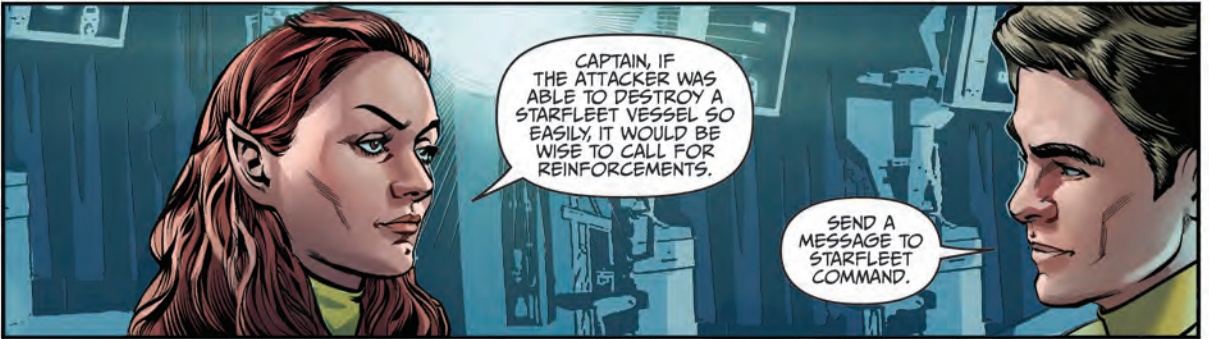
CAPTAIN TERRELL ORDERED ME TO THE BATTLE BRIDGE WHEN THEY STARTED DISSECTING US. IT'S THE ONLY REASON I SURVIVED.

...MY HUSBAND AND DAUGHTER... BUT THE REST OF THE CREW...



YOU FOLLOWED ORDERS, COMMANDER.

DON'T GIVE UP HOPE. WE'RE GOING TO GET THEM ALL BACK.



CAPTAIN, IF THE ATTACKER WAS ABLE TO DESTROY A STARFLEET VESSEL SO EASILY, IT WOULD BE WISE TO CALL FOR REINFORCEMENTS.

SEND A MESSAGE TO STARFLEET COMMAND.



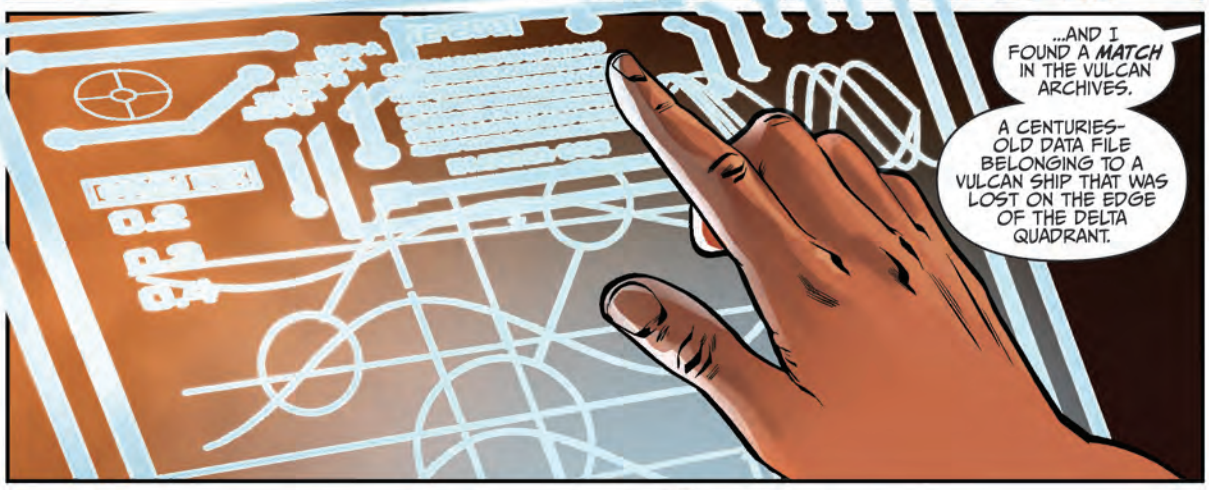
"BUT WE CAN'T WAIT FOR THEM."

NEW VULCAN.

SPOCK,
LOOK AT
THIS.

I CROSS-
REFERENCED
THE AUDIO FRAGMENT
JIM SENT US FROM
THE ENDEAVOUR...

"...RESISTANCE
"IS FUTILE..."



...AND I
FOUND A MATCH
IN THE VULCAN
ARCHIVES.

A CENTURIES-
OLD DATA FILE
BELONGING TO A
VULCAN SHIP THAT WAS
LOST ON THE EDGE
OF THE DELTA
QUADRANT.

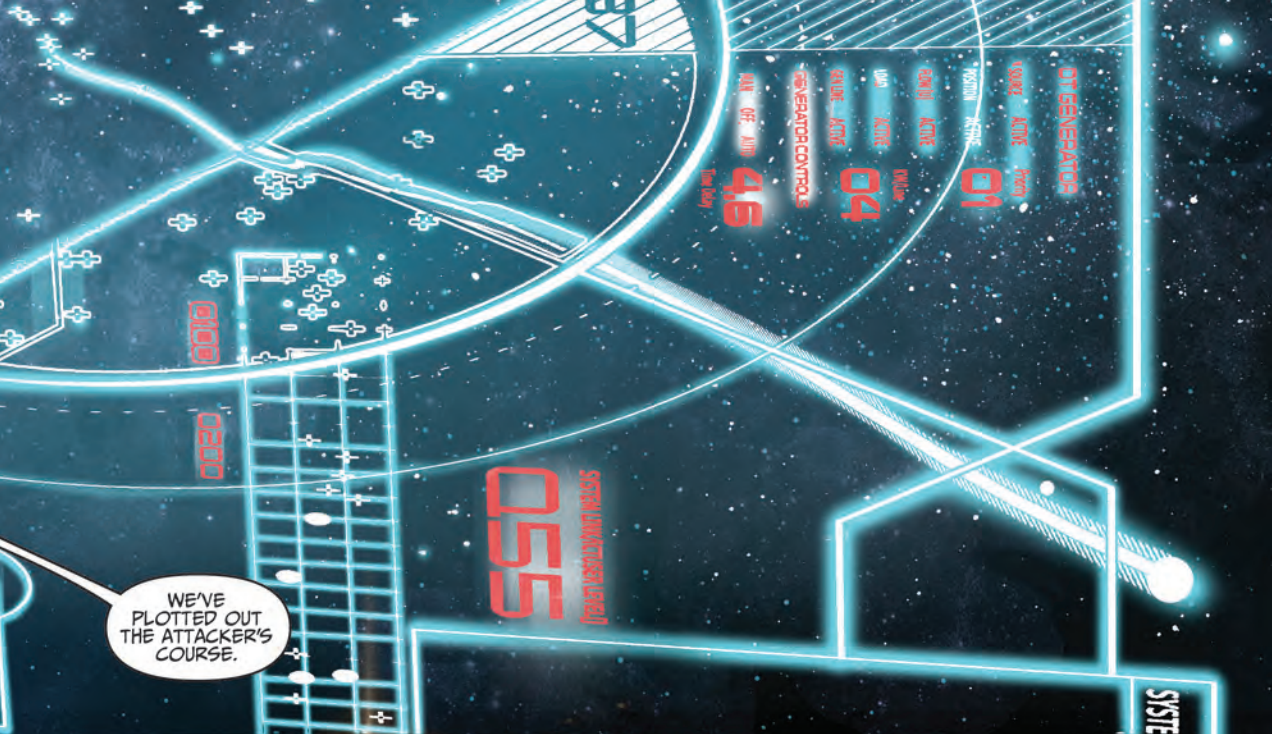
MOST
CURIOUS.
WE SHOULD
INVESTIGATE
FURTHER.

WE CAN'T
DO IT FROM
HERE.

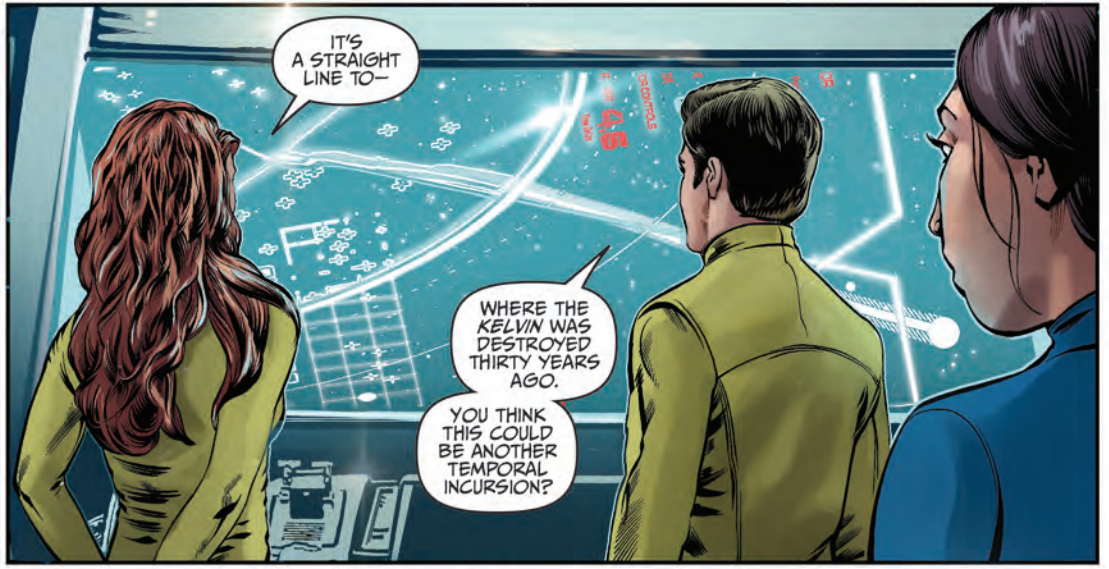


HOW DO YOU
FEEL ABOUT A
BREAK FROM OUR
SABBATICAL?





WE'VE PLOTTED OUT THE ATTACKER'S COURSE.



IT'S A STRAIGHT LINE TO—

WHERE THE KELVIN WAS DESTROYED THIRTY YEARS AGO.

YOU THINK THIS COULD BE ANOTHER TEMPORAL INCURSION?



SCANS DIDN'T PICK UP ANY CHRONITON RESIDUE, CAPTAIN, BUT THE DESTRUCTIVE POWER OF THE ATTACK ON THE CONCORD...

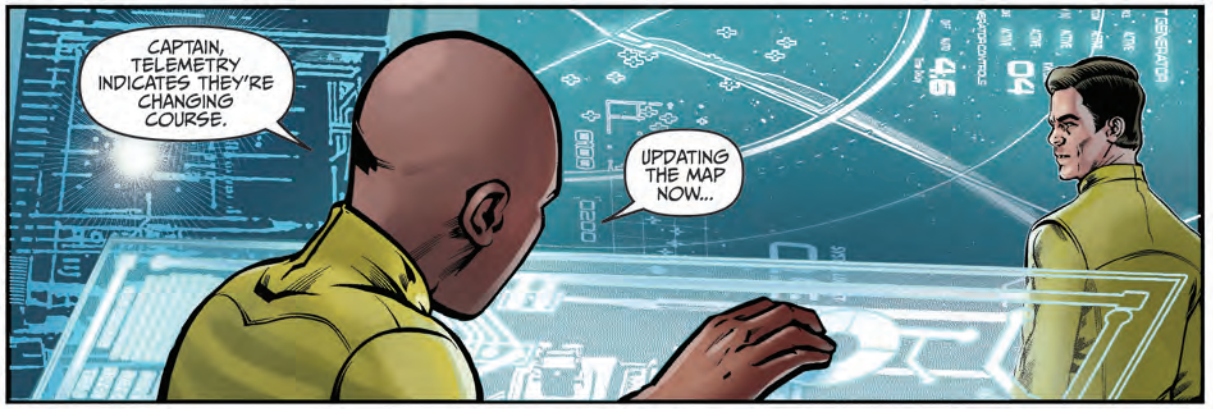
WELL, SIR, FROM WHAT I'VE SEEN IN THE RECORDS, IT'S LIKE...



IT'S OKAY, LT. ELLIX, YOU CAN SAY IT.

LIKE THE NARADA.

IT WAS EVEN UGLIER ON THE INSIDE, IF YOU CAN BELIEVE IT.



CAPTAIN, TELEMETRY INDICATES THEY'RE CHANGING COURSE.

UPDATING THE MAP NOW...



IT'S HEADING STRAIGHT FOR ROMULUS!

WHICH MEANS WE'RE HEADED THERE TOO.



LT. MURCIA, SEND A PRIORITY COMMAND TO THE BRADBURY. TELL THEM TO PLOT AN INTERCEPT WITH OUR NEW COURSE.

AYE, SIR!



CAPTAIN, ENTERING ROMULAN SPACE WOULD BE CONSIDERED AN ACT OF WAR.

I KNOW.



THAT'S WHY WE'RE GOING TO CATCH IT BEFORE IT CROSSES THE NEUTRAL ZONE.

WE'RE GOING TO RESCUE ANY SURVIVORS OF THE CONCORD WE CAN.

AND WE'RE GOING TO TAKE THIS THING OUT.