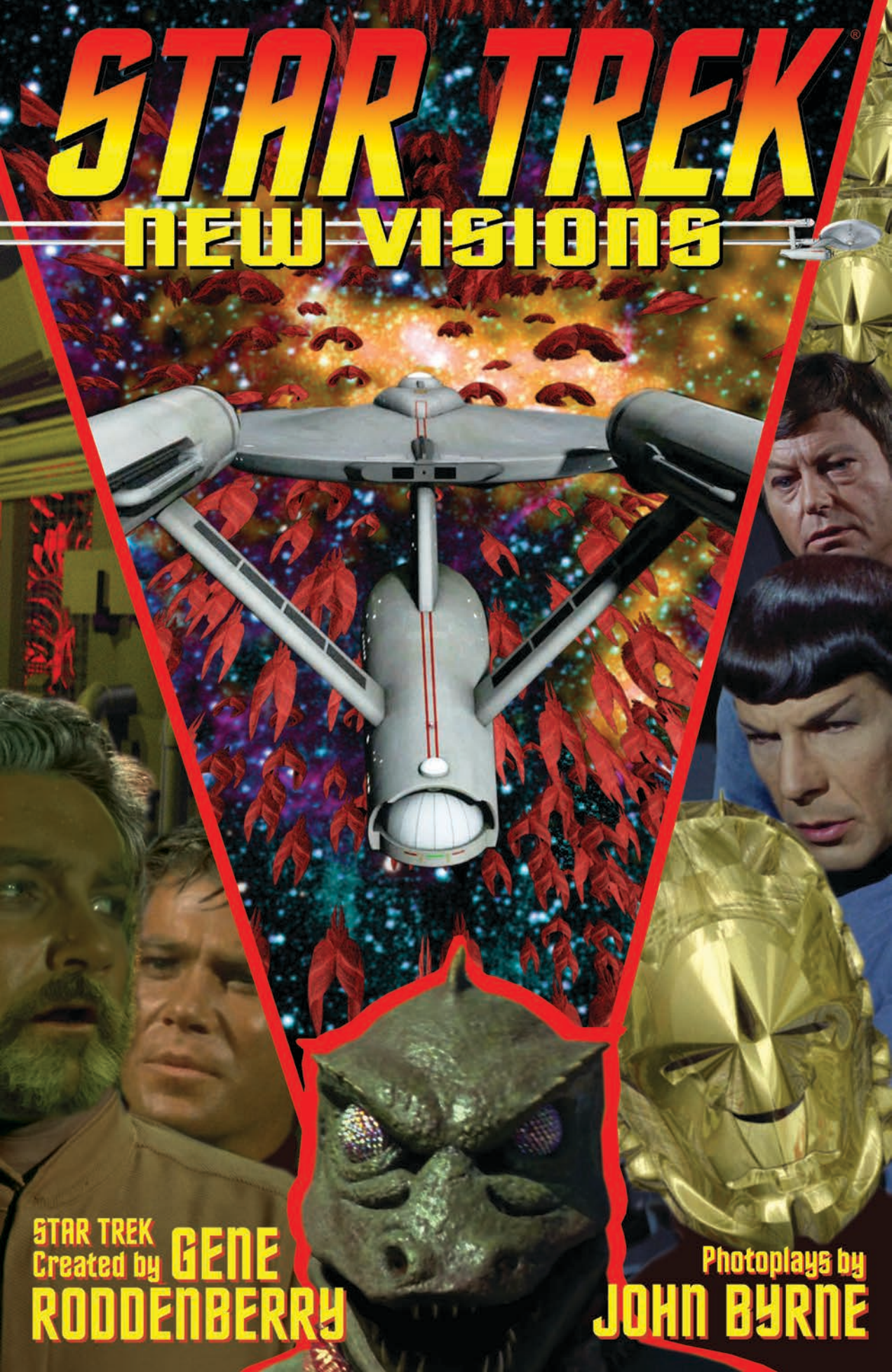


STAR TREK

NEW VISIONS



STAR TREK
Created by **GENE
RODDENBERRY**

Photoplays by
JOHN BYRNE



PHOTOMONTAGE AND STORY BY:
JOHN BYRNE

EDITS BY:
CHRIS RYALL

COLLECTION EDITS BY:
JUSTIN EISINGER
AND **ALONZO SIMON**

COLLECTION DESIGN BY:
GILBERTO LAZCANO

PUBLISHER:
TED ADAMS

STAR TREK CREATED BY:
GENE RODDENBERRY

Special thanks to Risa Kessler and John Van Citters of CBS Consumer Products for their invaluable assistance.

For international rights, contact licensing@idwpublishing.com

ISBN: 978-1-68405-088-8

20 19 18 17 1 2 3 4

IDW[®]
www.IDWPUBLISHING.com

Ted Adams, CEO & Publisher • Greg Goldstein, President & COO • Robbie Robbins, EVP/Sr. Graphic Artist • Chris Ryall, Chief Creative Officer • David Hedgecock, Editor-in-Chief • Laurie Windrow, Senior Vice President of Sales & Marketing • Matthew Ruzicka, CPA, Chief Financial Officer • Lorelei Bunjes, VP of Digital Services • Jerry Bennington, VP of New Product Development

Facebook: facebook.com/idwpublishing • Twitter: [@idwpublishing](https://twitter.com/idwpublishing) • YouTube: youtube.com/idwpublishing
Tumblr: tumblr.idwpublishing.com • Instagram: instagram.com/idwpublishing



STAR TREK: NEW VISIONS, VOLUME 5, AUGUST 2017, FIRST PRINTING. ® & © 2017 CBS Studios Inc. STAR TREK and related marks and trademarks of CBS Studios Inc. © 2017 Paramount Pictures Corporation. All Rights Reserved. The IDW logo is registered in the U.S. Patent and Trademark Office. IDW Publishing, a division of Idea and Design Works, LLC. Editorial offices: 2765 Truxtun Road, San Diego, CA 92106. Any similarities to persons living or dead are purely coincidental. With the exception of artwork used for review purposes, none of the contents of this publication may be reprinted without the permission of Idea and Design Works, LLC. Printed in Korea. IDW Publishing does not read or accept unsolicited submissions of ideas, stories, or artwork.

Originally published as STAR TREK: NEW VISIONS issues #12-14 and STAR TREK: NEW VISIONS SPECIAL: MORE OF THE SERPENT THAN THE DOVE.



I STILL CAN'T READ A CLEAR SIGNAL FROM COPERNICUS VII, SIR.

THE FRAGMENTS ADD UP TO A DISTRESS CALL, BUT I CAN'T GET ANY RESPONSE TO MY HAILS.

A NOVA? WAS THERE ANY WARNING?

NONE. IF THERE HAD BEEN, THE FEDERATION WOULD HAVE BEGUN EVACUATION MONTHS, EVEN YEARS AGO!

IT... READS LIKE INTERFERENCE FROM A SUPER-NOVA!



A SUPERNOVA SEEMS UNLIKELY, CAPTAIN.

THAT WOULD BE MOST ATYPICAL FOR AN EXPLODING STAR.

WE ARE STILL TOO FAR OUT FOR PRECISE READINGS, BUT ENERGY LEVELS ARE DROPPING FAST.



INTERFERENCE LEVEL IS DROPPING TOO, CAPTAIN.

BUT THERE'S NO SIGNAL AT ALL, NOW.

COPERNICAN SYSTEM NOW IN VISUAL RANGE, CAPTAIN!

LOOK!!

Space, the Final Frontier. These are the voyages of the starship *Enterprise*. Its five-year mission: to explore strange new worlds. To seek out new life, and new civilizations. To boldly go where no man has gone before.

STAR TREK

Created by **GENE RODDENBERRY**

CAPTAIN'S LOG,
STARDATE 4575.9

APPROACHING COPERNICUS
STAR SYSTEM--OR WHAT
REMAINS OF IT.

"SWARM"

SLOWING TO IMPULSE POWER
ONLY, ONE QUARTER SPEED.



I'LL
NEVER CEASE
TO BE AWESTRUCK
BY THE TERRIBLE
BEAUTY OF AN
EXPLODING
STAR.

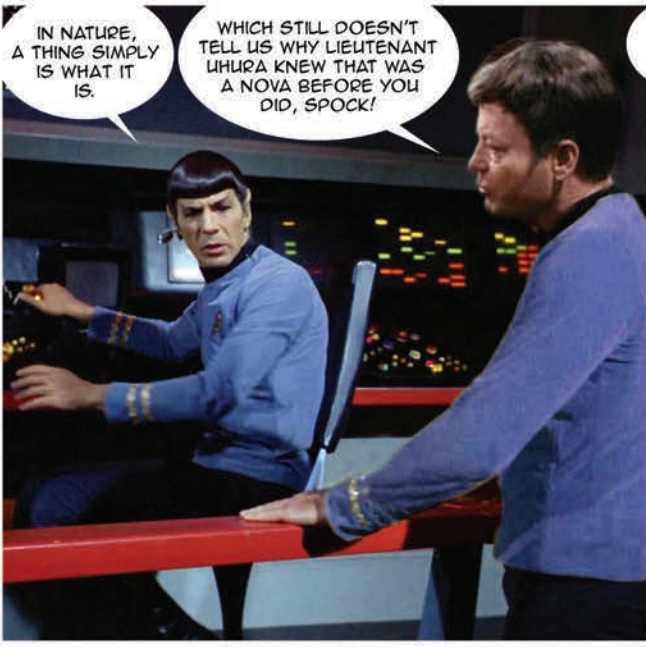
SO
MUCH DEATH
AND DESTRUCTION,
AND YET...

BEAUTY
IS A HUMAN
CONSTRUCT,
DOCTOR.



Photomontage
and Story by **JOHN BYRNE**

DEDICATED TO THE TALENTED PERFORMERS, CRAFTSMEN AND TECHNICIANS WHOSE WORK IS REPRESENTED HERE

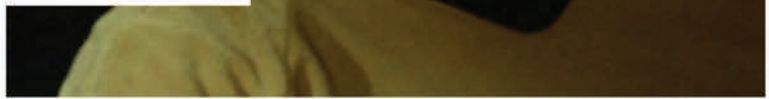


IN NATURE, A THING SIMPLY IS WHAT IT IS.

WHICH STILL DOESN'T TELL US WHY LIEUTENANT UHURA KNEW THAT WAS A NOVA BEFORE YOU DID, SPOCK!

SAVE IT, BONES.

WHAT ARE YOU READING NOW, SPOCK?



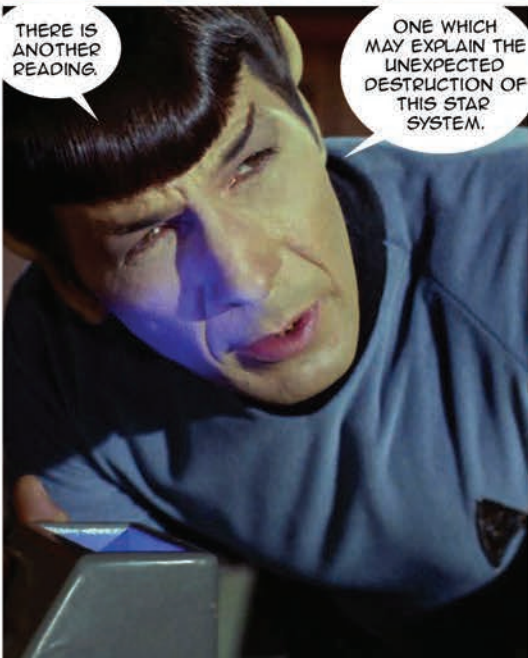
PATTERNS OF DESTRUCTION AS ARE TYPICALLY ASSOCIATED WITH A SUPERNOVA, CAPTAIN.

ALL THE INNER PLANETS HAVE BEEN DESTROYED.

THREE OUTER PLANETS REMAIN, BUT THEIR ORBITS HAVE BEEN GREATLY DISRUPTED.

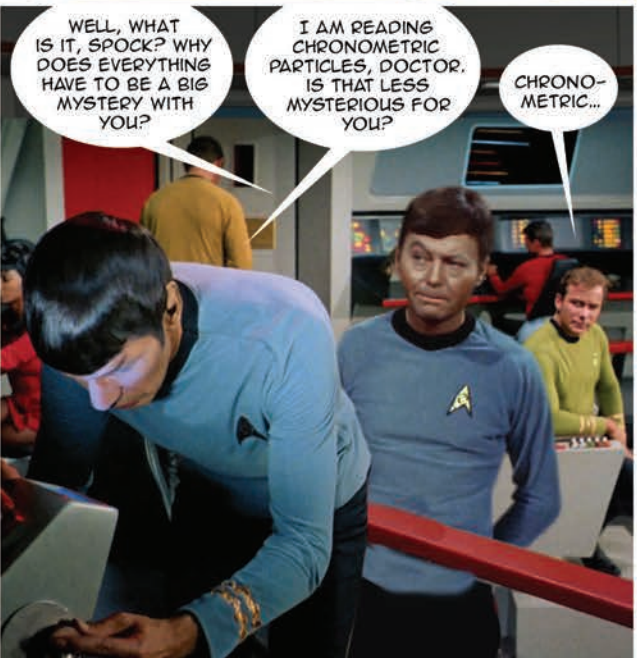
ONLY THE STEADY, RAPID DROP IN ENERGY LEVELS IS UNUSUAL...

WAIT!



THERE IS ANOTHER READING.

ONE WHICH MAY EXPLAIN THE UNEXPECTED DESTRUCTION OF THIS STAR SYSTEM.



WELL, WHAT IS IT, SPOCK? WHY DOES EVERYTHING HAVE TO BE A BIG MYSTERY WITH YOU?

I AM READING CHRONOMETRIC PARTICLES, DOCTOR. IS THAT LESS MYSTERIOUS FOR YOU?

CHRONOMETRIC...



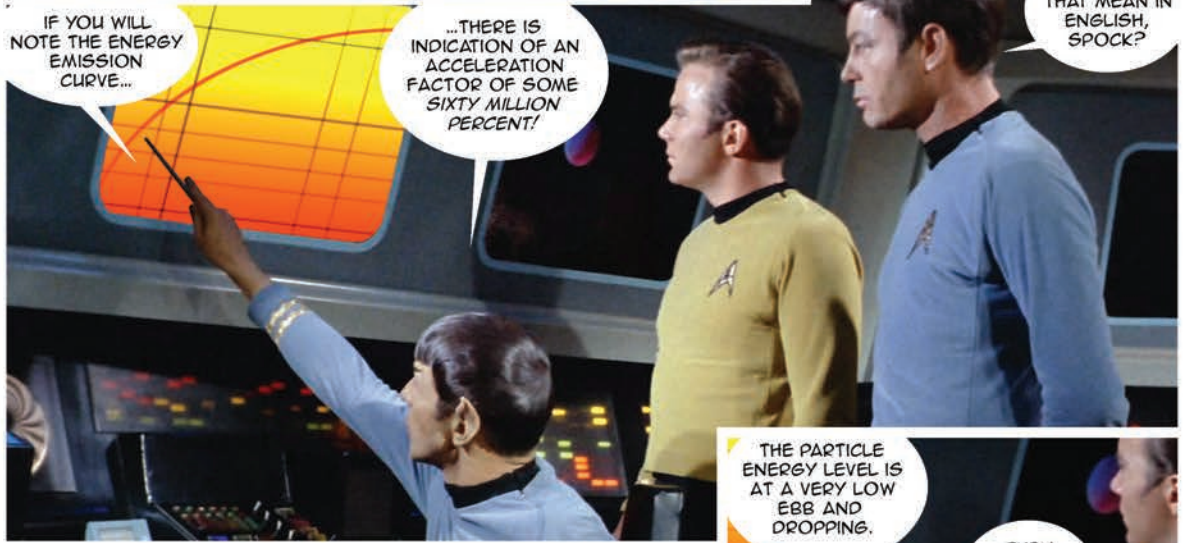
SPOCK... TIME DISPLACEMENT?

WHAT?? NOT TIME TRAVEL AGAIN!!

NO, DOCTOR.

NOT TIME TRAVEL...

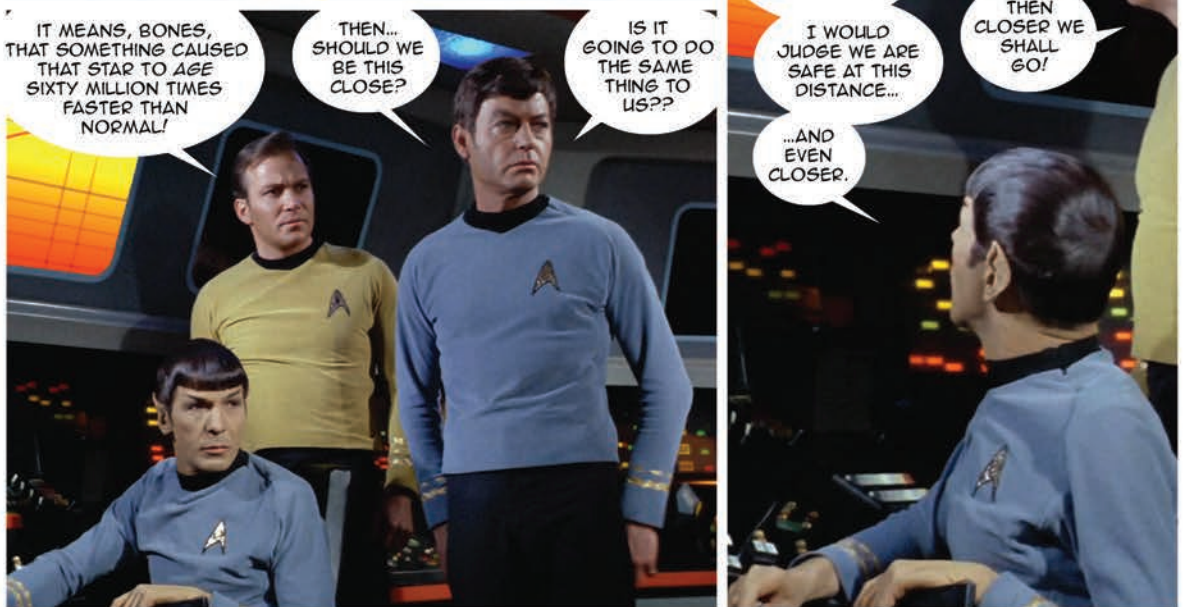
...BUT THE PRESENCE OF SUCH PARTICLES INDICATES AN ARTIFICIAL ALTERATION OF TIME.



IF YOU WILL NOTE THE ENERGY EMISSION CURVE...

...THERE IS INDICATION OF AN ACCELERATION FACTOR OF SOME SIXTY MILLION PERCENT!

WHAT'S THAT MEAN IN ENGLISH, SPOCK?



IT MEANS, BONES, THAT SOMETHING CAUSED THAT STAR TO AGE SIXTY MILLION TIMES FASTER THAN NORMAL!

THEN... SHOULD WE BE THIS CLOSE?

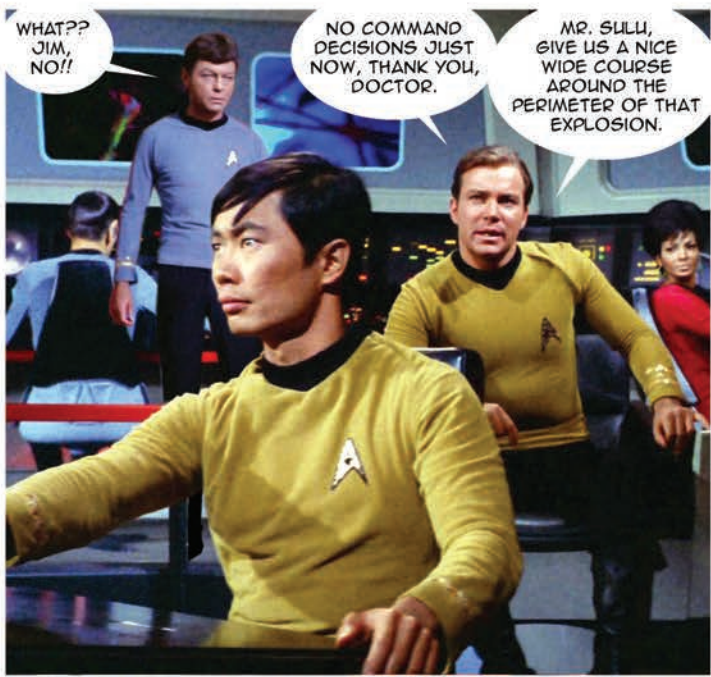
IS IT GOING TO DO THE SAME THING TO US??

THE PARTICLE ENERGY LEVEL IS AT A VERY LOW EBB AND DROPPING.

I WOULD JUDGE WE ARE SAFE AT THIS DISTANCE...

THEN CLOSER WE SHALL GO!

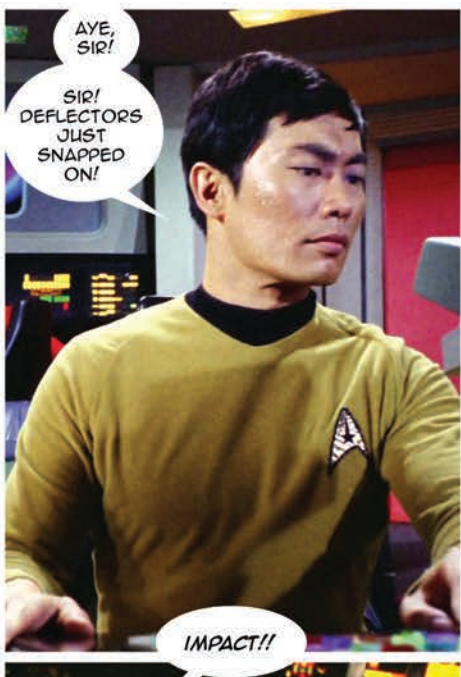
...AND EVEN CLOSER.



WHAT??
JIM,
NO!!

NO COMMAND
DECISIONS JUST
NOW, THANK YOU,
DOCTOR.

MR. SULLI,
GIVE US A NICE
WIDE COURSE
AROUND THE
PERIMETER OF THAT
EXPLOSION.



AYE,
SIR!

SIR!
DEFLECTORS
JUST
SNAPPED
ON!

IMPACT!!



REPORT,
MISTER
SULLI!

WHAT
WAS
THAT?

SOME
KIND OF
SHOCK WAVE,
SIR!

BUT NOT
CONSISTENT
WITH A NORMAL
SUPERNOVA.



AND
HERE COMES
ANOTHER
ONE!