



CARTOON HANGOVER

# BRAVEST WARRIORS



CREATED BY

**PENDLETON WARD**

WRITTEN BY

**KATE LETH**

ILLUSTRATED BY

**IAN MCGINTY**

COLORS BY

**LISA MOORE**

LETTERS BY

**COREY BREEN**

---

**"BEARDI GRAS"**

WRITTEN AND ILLUSTRATED BY

**KAT LEYH**

---

COVER

**IAN MCGINTY**

SUBSCRIPTION COVER

**JINA NOH**

COLORS BY FRED STRESING

DESIGNER

**KELSEY DIETERICH**

ASSISTANT EDITOR

**CAMERON CHITTOCK**

EDITOR

**SHANNON WATTERS**

WITH SPECIAL THANKS TO BREEHN BURNS, ERIC HOMAN, FRED SEIBERT,  
RUTH MORRISON, NATE OLSON, AND ALL OF THE CLASSY FOLKS AT  
FREDERATOR STUDIOS.



WWW.KABOOM-STUDIOS.COM

BRAVEST WARRIORS No. 34, July 2015. Published by KaBOOM!, a division of Boom Entertainment, Inc., 5870 Wilshire Boulevard, Suite 450, Los Angeles, CA 90028-5879. Based on "Bravest Warriors"™ & © 2015 Frederator Networks, Inc. All rights reserved. KaBOOM!™ and the KaBOOM! logo are trademarks of Boom Entertainment, Inc., registered in various countries and categories. All characters, events, and institutions depicted herein are fictional. Any similarity between any of the names, characters, persons, events, and/or institutions in this publication to actual names, characters, and persons, whether living or dead, events, and/or institutions is unintended and purely coincidental. KaBOOM! does not read or accept unsolicited submissions of ideas, stories, or artwork. For information regarding the CPSIA on this printed material, call: (203) 595-3036 and provide reference #RICH - 626069. PRINTED IN USA.



FREDERATOR



**BREEP!  
BREEP!**



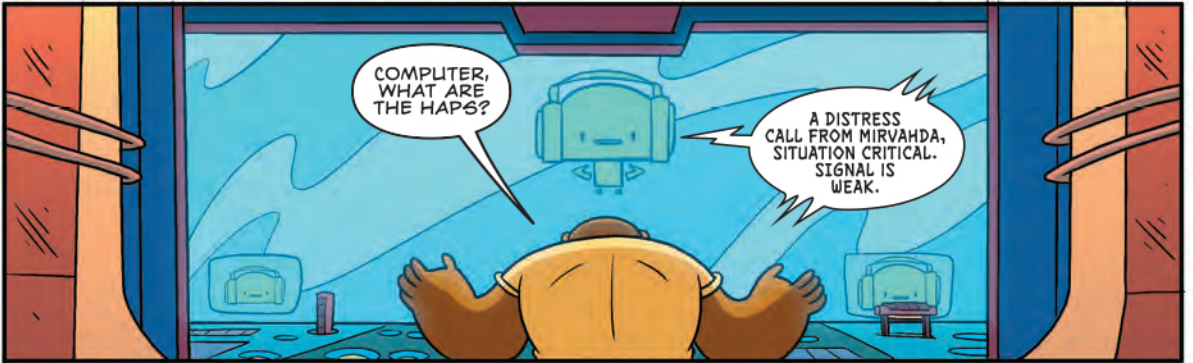
**IT'S  
THE END  
TIMES!**

**BREEP!  
BREEP!**



**BREEP!  
BREEP!**

AW,  
MARMELADE.



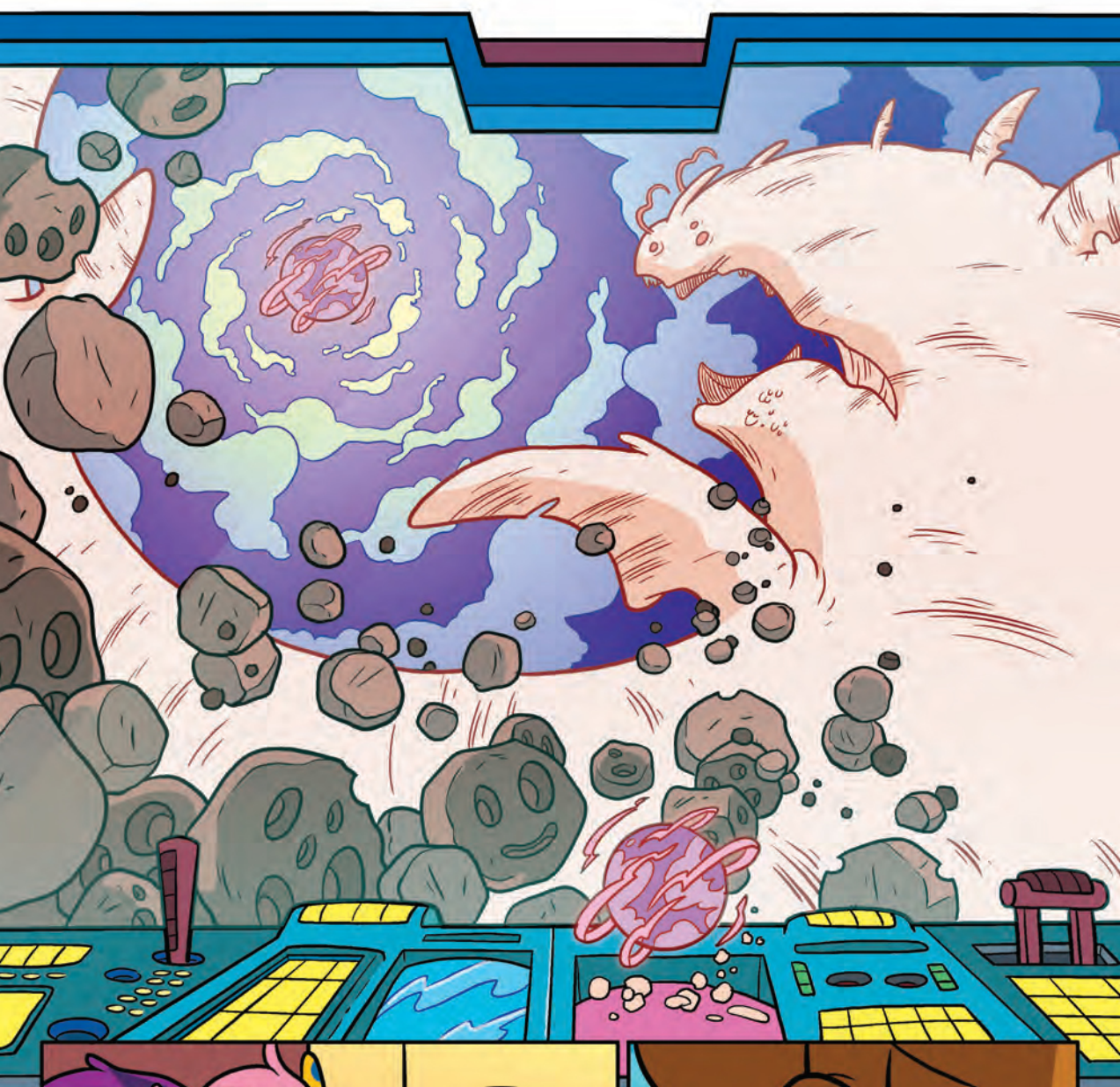
COMPLTER,  
WHAT ARE  
THE HAPS?

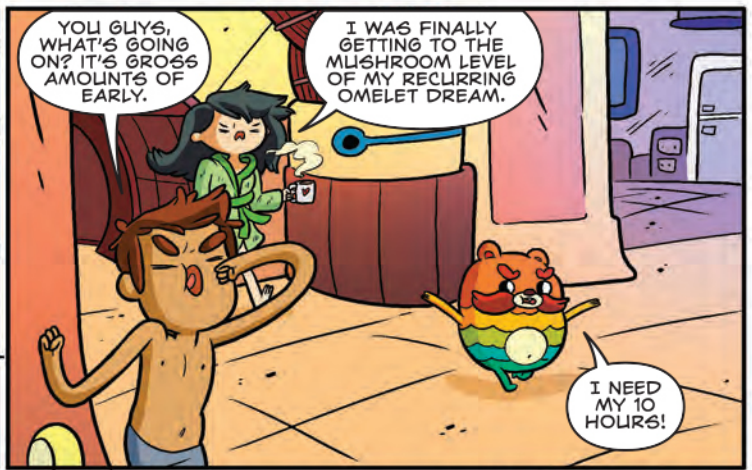
A DISTRESS  
CALL FROM MIRVAHDA,  
SITUATION CRITICAL.  
SIGNAL IS  
WEAK.



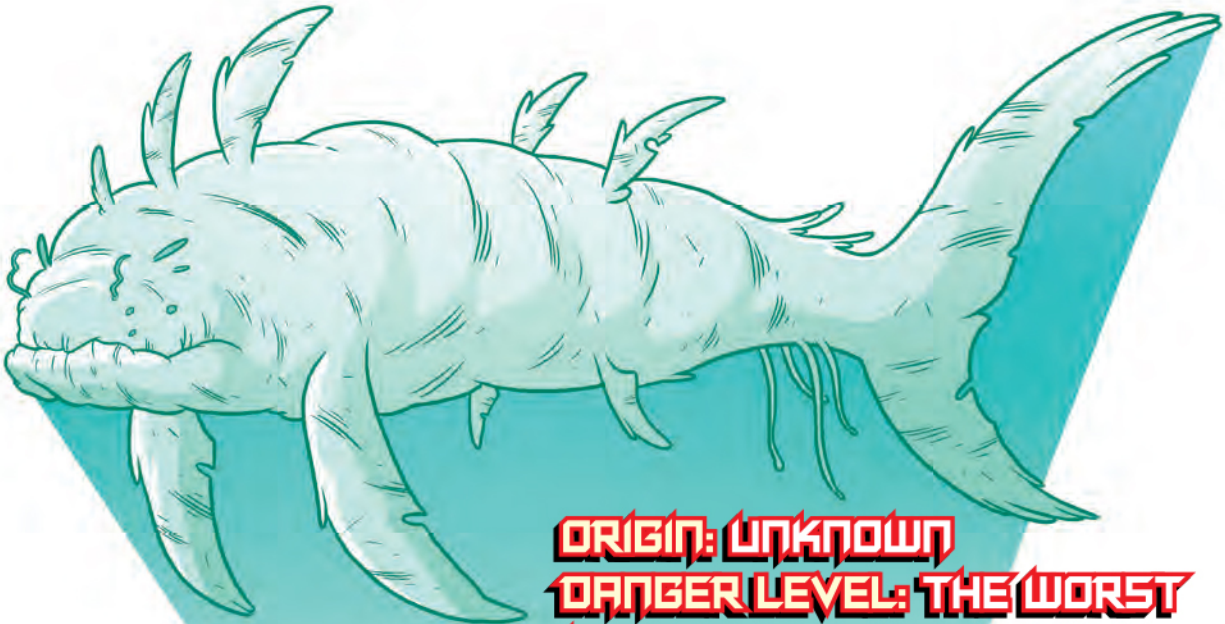
JINKIES.







## COLOSSAL MATTER SHARK OR DEVOURER OF REALMS



**ORIGIN: UNKNOWN**  
**DANGER LEVEL: THE WORST**  
**IF SPOTTED: BYE FOREVER**

THE COLOSSAL MATTER SHARK EMERGED IN THE YEAR 3020 IN DEEP SPACE FROM PARTS UNCHARTED. REMAINING DORMANT FOR SEVERAL DECADES, IT WAS LABELLED A "DEVOURER OF REALMS" WHEN IT APPEARED IN THE ORBIT OF AND SUBSEQUENTLY ATE THE PLANET FHLOSTON. IT HAS SINCE CONSUMED SEVEN PLANETS, SIX OF WHICH WERE UNINHABITED. IT REMAINS IMMUNE TO ARTILLERY AND EXPLOSIVES, BUT IS EXTREMELY SLOW-MOVING, ALLOWING FOR THE POSSIBILITY OF PLANETARY EVACUATION BEFORE CONSUMPTION.

