

IDW
ISSUE
3
\$3.99

Michael Recycle



WHARTON • COLOMBO • ZAHLER

MICHAEL RECYCLE AND THE MONARCH BUTTERFLIES



**WRITER:
ELLIE WHARTON**

**ARTIST:
ALEXANDRA COLOMBO**

**LAYOUTS:
THOM ZAHLER**

**“DID YOU KNOW?” WRITER:
RANDALL LOTOWYCZ**

**LETTERER:
SHAWN LEE**

**EDITOR:
SARAH GAYDOS & CHRIS CERASI**

**PUBLISHER:
TED ADAMS**



cover by alexandra colombo

For international rights, contact licensing@idwpublishing.com

IDW[®]
www.IDWPUBLISHING.com

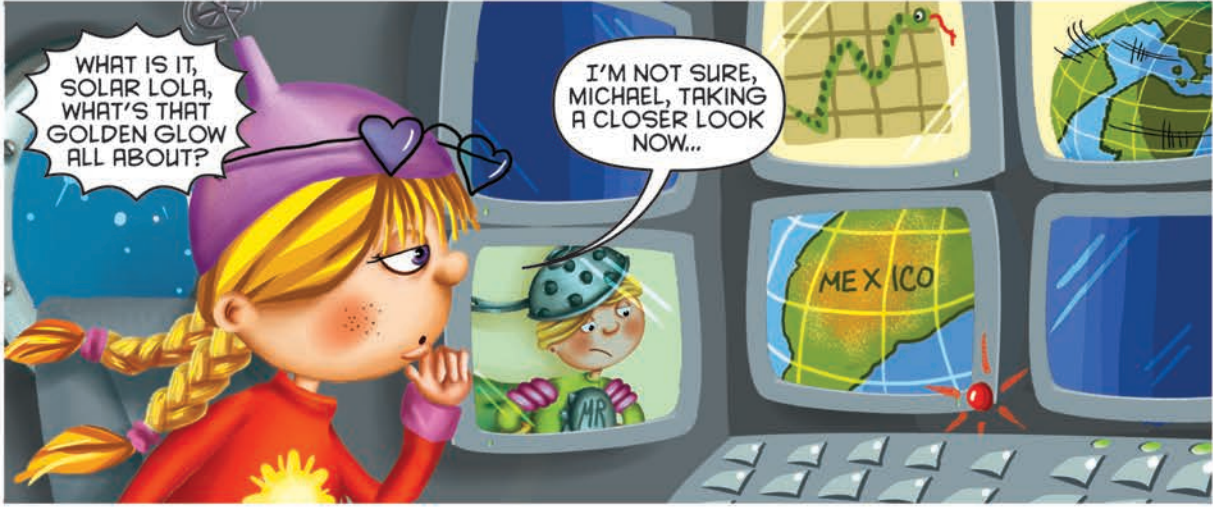
Ted Adams, CEO & Publisher • Greg Goldstein, President & COO • Robbie Robbins, EVP/ISr, Graphic Artist • Chris Ryall, Chief Creative Officer • David Hedgecock, Editor-in-Chief • Laurie Windrow, Senior Vice President of Sales & Marketing • Matthew Ruzicka, CPA, Chief Financial Officer • Lorelei Bunjes, VP of Digital Services • Jerry Bennington, VP of New Product Development

Facebook: facebook.com/idwpublishing • Twitter: [@idwpublishing](https://twitter.com/idwpublishing) • YouTube: youtube.com/idwpublishing
Tumblr: tumblr.idwpublishing.com • Instagram: instagram.com/idwpublishing



MICHAEL RECYCLE #3, MAY 2017, FIRST PRINTING. Text © 2017 Ellie Wharton. Illustrations © 2017 Alexandra Colombo. All Rights Reserved. IDW Publishing, a division of Idea and Design Works, LLC. Editorial offices: 2765 Truxtun Road, San Diego, CA 92106. The IDW logo is registered in the U.S. Patent and Trademark Office. Any similarities to persons living or dead are purely coincidental. With the exception of artwork used for review purposes, none of the contents of this publication may be reprinted without the permission of Idea and Design Works, LLC. Printed in Korea. IDW Publishing does not read or accept unsolicited submissions of ideas, stories, or artwork.





WHAT IS IT, SOLAR LOLA, WHAT'S THAT GOLDEN GLOW ALL ABOUT?

I'M NOT SURE, MICHAEL, TAKING A CLOSER LOOK NOW...



I THINK THIS IS A JOB FOR THE SUPERSONIC SPECS, MICHAEL!

AFFIRMATIVE!

OH, DEAR! THOSE BUTTERFLIES DON'T LOOK GOOD... I'LL HAVE TO TAKE AN EVEN CLOSER LOOK.

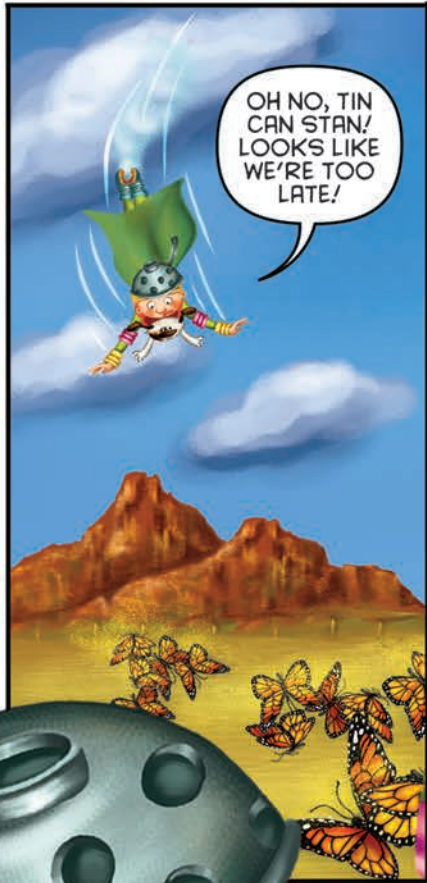
TIN CAN STAN, ARE YOU READY FOR ANOTHER MISSION?

WOOF WOOF WOOF WOOF!





IT REALLY IS RATHER BEAUTIFUL UP HERE, BUT I HAVE A FEELING WE'RE GOING TO RUN INTO TROUBLE.



OH NO, TIN CAN STAN! LOOKS LIKE WE'RE TOO LATE!



THE BUTTERFLIES ARE DYING!



OH ME, OH MY, IT'S JUST TOO SAD!



MY OLD FRIEND, JANINE GREEN, I WONDER WHAT SHE'S DOING HERE... AND SHE LOOKS LIKE SHE'S UPSET ABOUT THE BUTTERFLIES, TOO!





JANINE, IS THAT YOU?

MICHAEL!
->SOB-> IS THAT REALLY YOU?
->SOB-> IT'S SO GOOD TO SEE YOU! ->SOB->



GREAT TO SEE YOU TOO, JANINE! BUT WHAT ARE YOU DOING HERE? AND WHAT CAUSED THIS TRAGEDY?!

I'M A NATURALIST NOW, AND MY SPECIAL SUBJECT IS BUTTERFLIES.



I CAME HERE TO STUDY THE MIGRATION HABITS OF THE MONARCH BUTTERFLY, AND THIS IS WHAT I FOUND!

->SOB-> IT'S SO AWFUL!



DON'T WORRY. WE'LL GET TO THE BOTTOM OF THIS... I'M HERE TO HELP!

THANK GOODNESS, MICHAEL. IT'S JUST SO SAD. WE NEED TO STOP THIS...

...AND I HAVE AN IDEA HOW...

WOOF!