


ORIGINALLY, THE LOUVRE HAD BEEN A FORTRESS.

LATER, IT WAS A PALACE— THE HOME OF FRENCH ROYALTY BEFORE LOUIS XIV MOVED TO VERSAILLES.

CURRENTLY, IT IS THE **LARGEST MUSEUM** IN THE WORLD...



...AND IT'S BEEN HAUNTED FOR CENTURIES. SOME HAVE SEEN A MUMMY STALKING THE HALLS, AND MANY MORE HAVE FELT A HEAVY PRESENCE WHILE VIEWING SOME OF THE MORE FAMOUS ARTWORK ON DISPLAY.

BUT NOTHING *OVERT* HAS HAPPENED HERE SINCE AT LEAST, WHAT, 1965.

THAT CHANGED TONIGHT.

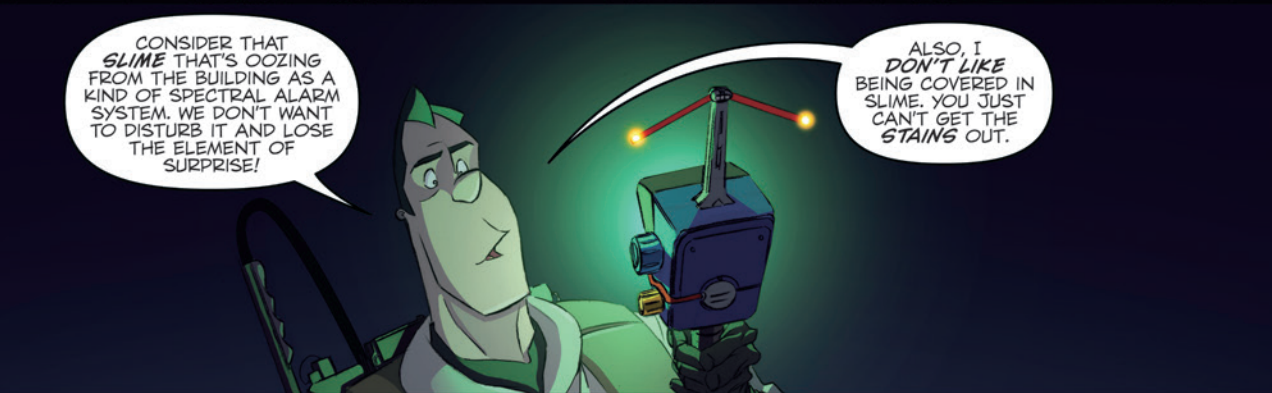
AND SINCE THE GHOSTBUSTERS WERE IN TOWN ANYWAY...



SO... WHO WANTS TO TELL ME AGAIN *WHY* WE DIDN'T JUST GO IN THE *FRONT* DOOR?



DISCRETION,
PETER!



CONSIDER THAT *SLIME* THAT'S OOZING FROM THE BUILDING AS A KIND OF SPECTRAL ALARM SYSTEM. WE DON'T WANT TO DISTURB IT AND LOSE THE ELEMENT OF SURPRISE!

ALSO, I *DON'T LIKE* BEING COVERED IN SLIME. YOU JUST CAN'T GET THE STAINS OUT.



AND *THERE* IT IS.

HOW *FAR* WE GOT, LIEUTENANT? DO YOU NEED TO CHECK A MAP?

IT ISN'T FAR, AND YES, I'M *QUITE SURE*. WHEN I WAS YOUNGER, I WAS VERY MUCH THE *CATAPHILE*.



I'VE ALWAYS BEEN MORE OF A *DOG* GUY, MYSELF.

A CATAPHILE HAS NOTHING TO DO WITH *CATS*. IT MEANS THAT I'VE EXTENSIVELY *EXPLORED* THE NETWORK OF CATACOMBS BENEATH THE CITY. IN FACT, I JOINED THE POLICE FORCE WITH THE FULL INTENTION OF *ENLISTING* IN THE DIVISION THAT PATROLS DOWN HERE.

THEY WEREN'T HIRING.

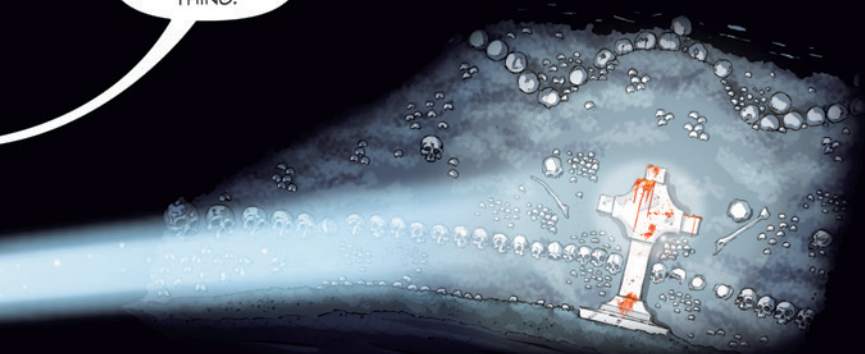


YEAH, HE KNOWS WHAT A CATAPHILE IS, SIR. HE JUST COULDN'T HELP HIMSELF.

—IS THAT WHAT IT LOOKS LIKE?

WAIT—

HEY, RAY—GOOD CALL ON THAT WHOLE AVOIDING THE SLIME THING.



—SIGH—

WELL, I GUESS WE'LL TAKE IT FROM HERE!

ACTUALLY, DR. STANTZ, I'LL BE ESCORTING YOU *INSIDE* THE MUSEUM.

I SUDDENLY GET THE SENSE YOUR PRESIDENT MAY NOT FULLY TRUST US.

I HAVE FULL AUTHORITY TO SHOOT YOU IF ANYTHING IS IRREPARABLY DAMAGED.



THAT'S PROBABLY FAIR.

MEANWHILE, BACK IN NYC...

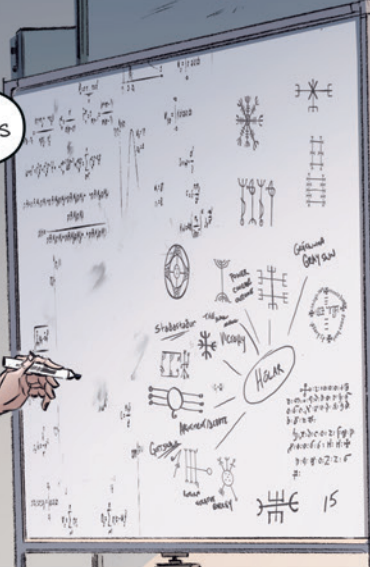
AS I'LL BE INVESTIGATING A POTENTIALLY DANGEROUS MANIFESTATION IN **PUERTO RICO**, I'M RECORDING MY CURRENT RESEARCH FOR FUTURE REFERENCE, ON THE OFF CHANCE THAT I'M... SEVERELY **INCAPACITATED**.

IT IS **VITAL** THAT THIS BE SEEN TO, AND I EXPECT YOU'LL **ALL** AGREE.

THE DATA COLLECTED ON **POVEGLIA** ALIGNED WITH A **STARTLING CONSISTENCY** TO THOSE I PERSONALLY RECORDED MORE THAN **TWENTY YEARS** AGO IN NORTHERN EUROPE, AS WELL AS THOSE FROM THE UNITED NATIONS.

THE OPEN AGGRESSION FROM MINOR GHOSTS **ALSO** SUPPORTS MY HYPOTHESIS.

I BELIEVE SOMEONE HAS FOUND...



...THE **RAUOSKINNA**.

AT THIS POINT OF THE RECORDING, VENKMAN WILL LIKELY MAKE A **COMMENT** ABOUT THE BOOK'S NAME OR PRONUNCIATION, WITH AN OUTSIDE POSSIBILITY HE'S REFERENCED THE NORWEGIAN FLIGHT ATTENDANT WHO PUNCHED HIM OUT IN GRAD SCHOOL.

GET IT ALL **OUT** OF YOUR SYSTEM, PETER.

THIS IS **QUITE** SERIOUS.





THE
RAUOSKINNA
IS A GRIMOIRE
OF IMMENSE
POWER...

...THE SPELLS
IT CONTAINS
HAVE BEEN SAID
TO BE CAPABLE OF
CONTROLLING
THE DEVIL.



"NATURALLY, ITS AUTHOR, THE ICELANDIC BISHOP GOTTSKALK NIKULAUSSON, SOMETIMES CALLED NIKULAUSSON THE CRUEL, DIDN'T WANT THIS KIND OF POWER TO FALL INTO THE WRONG HANDS.

"HE PLACED A SPELL OF PROTECTION ON THE BOOK, BINDING SPIRITS TO DISCOURAGE ANYONE WHO MIGHT BE LOOKING FOR IT.

"THE BOOK WAS LATER BURIED WITH HIM, AND THE LOCATION WAS KEPT SECRET... OR WAS MEANT TO BE. CLUES WERE LEFT AND HIDDEN AROUND THE WORLD BY A SECRET SOCIETY ASSOCIATED WITH THE CHURCH, WHICH HOPED TO FIND AND USE THE BOOK TO CONTROL THE DEVIL DURING ARMAGEDDON.



"THE CLUES WERE DECIPHERED NEARLY 200 YEARS AFTER NIKULAUSSON'S DEATH BY THE SORCERER LOFTUR BORSTEINSSON, WHO FOUND THE GRAVE, AND THE BOOK... BUT WAS ATTACKED BY THE SPIRITS OF THE OCEAN ITSELF WHEN HE TRIED TO LEAVE ICELAND WITH IT."