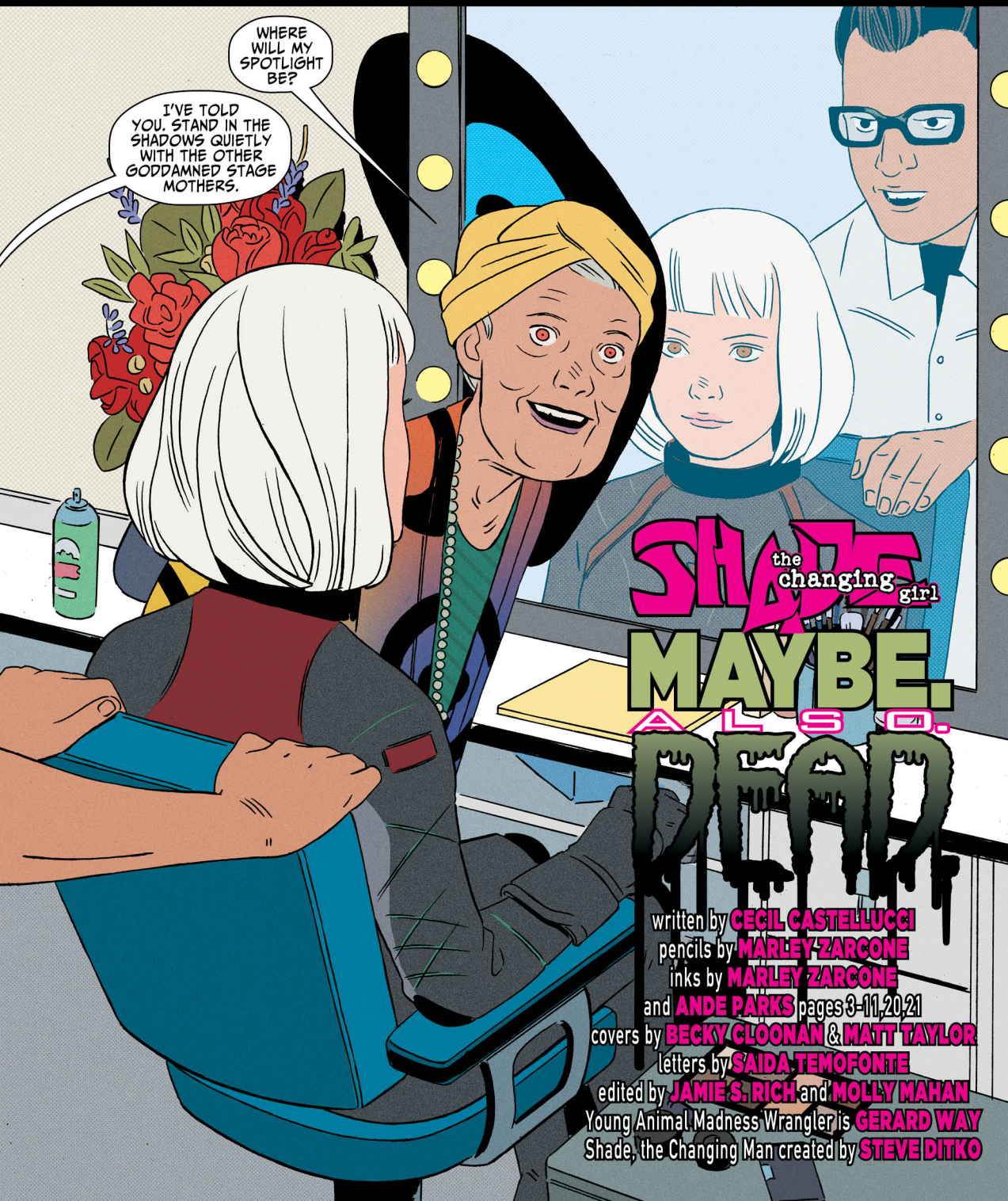




YOU'RE WANTED ON SET, SHADE.

"BRILLIANTLY MADE UP TO BE A VESSEL FOR ANYTHING."

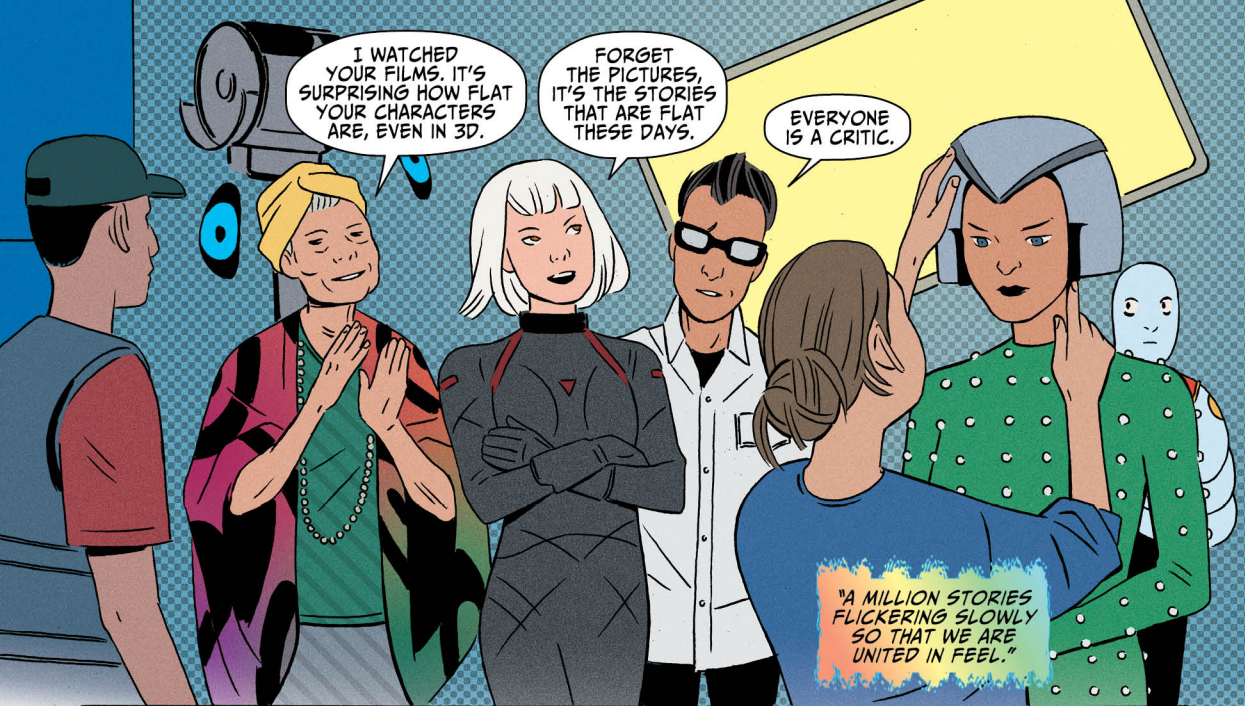
"SHE IS A FAÇADE. AN EMOTIONAL SCAFFOLD WE ALL CLIMB IN THE DARK."



WHERE WILL MY SPOTLIGHT BE?  
I'VE TOLD YOU. STAND IN THE SHADOWS QUIETLY WITH THE OTHER GODDAMNED STAGE MOTHERS.

SHADE the changing girl  
MAYBE.  
ALSO.  
DEAD

written by **CECIL CASTELLUCCI**  
pencils by **MARLEY ZARCONE**  
inks by **MARLEY ZARCONE**  
and **ANDE PARKS** pages 3-11, 20, 21  
covers by **BECKY CLOONAN & MATT TAYLOR**  
letters by **SAIDA TEMOFONTE**  
edited by **JAMIE S. RICH** and **MOLLY MAHAN**  
Young Animal Madness Wrangler is **GERARD WAY**  
Shade, the Changing Man created by **STEVE DITKO**



I WATCHED YOUR FILMS. IT'S SURPRISING HOW FLAT YOUR CHARACTERS ARE, EVEN IN 3D.

FORGET THE PICTURES, IT'S THE STORIES THAT ARE FLAT THESE DAYS.

EVERYONE IS A CRITIC.

"A MILLION STORIES FLICKERING SLOWLY SO THAT WE ARE UNITED IN FEEL."



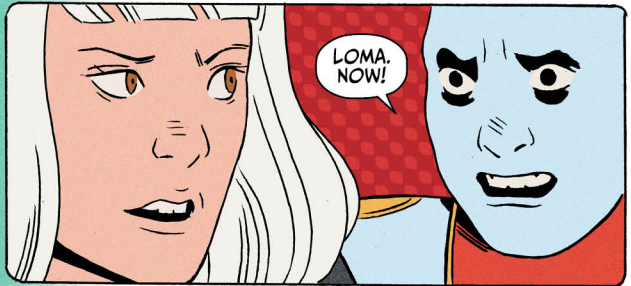
IF I WERE THE STAR, THERE WOULD BE MORE FLAIR.

"SHADOWS AND LIGHT."



NOW THIS IS HOW YOU MAKE MOVIE MAGIC.

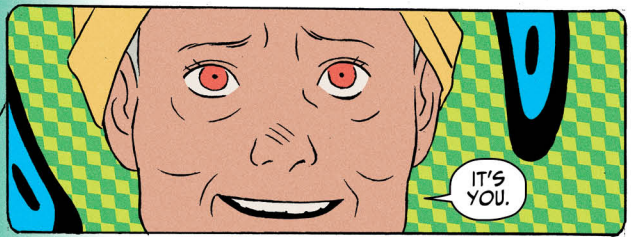
LOMA.



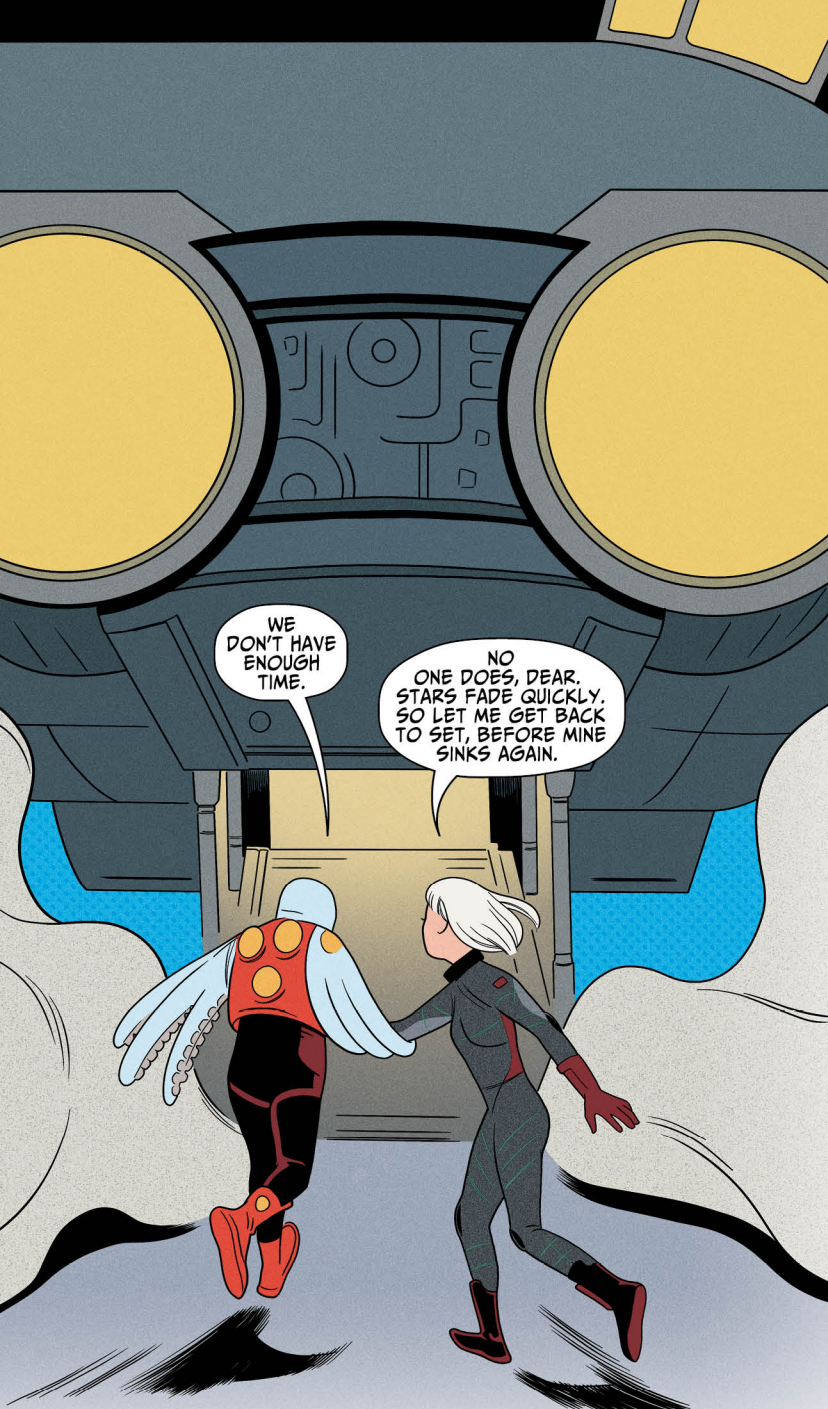
LOMA. NOW!



HEY! DON'T TOUCH THE TALENT.



IT'S YOU.



WE DON'T HAVE ENOUGH TIME.

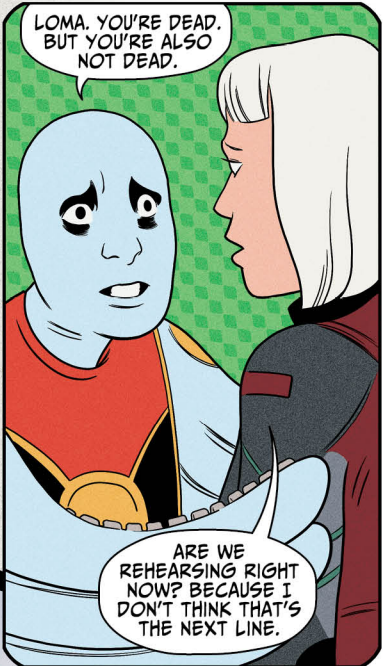
NO ONE DOES, DEAR. STARS FADE QUICKLY. SO LET ME GET BACK TO SET, BEFORE MINE SINKS AGAIN.



YOU'RE HERE!

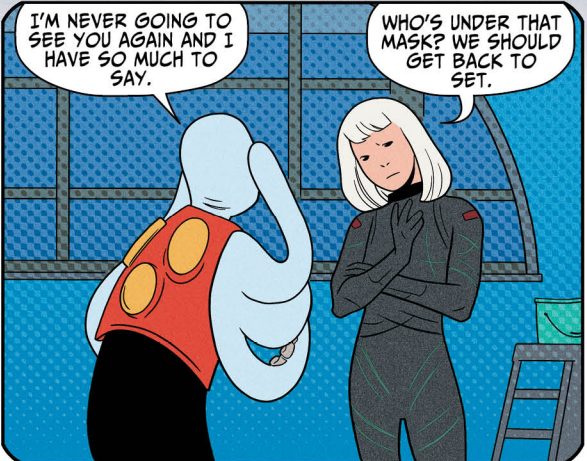


LEPUCK.



LOMA. YOU'RE DEAD. BUT YOU'RE ALSO NOT DEAD.

ARE WE REHEARSING RIGHT NOW? BECAUSE I DON'T THINK THAT'S THE NEXT LINE.



I'M NEVER GOING TO SEE YOU AGAIN AND I HAVE SO MUCH TO SAY.

WHO'S UNDER THAT MASK? WE SHOULD GET BACK TO SET.



WAIT. SHE KNOWS YOU.

