



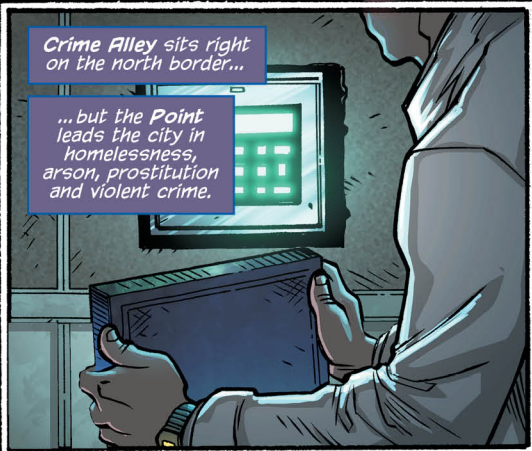
The Bowery has always been the worst neighborhood in Gotham.

And Crown Point, one of its inner districts, is the worst of the worst.



Crime Alley sits right on the north border...

...but the Point leads the city in homelessness, arson, prostitution and violent crime.



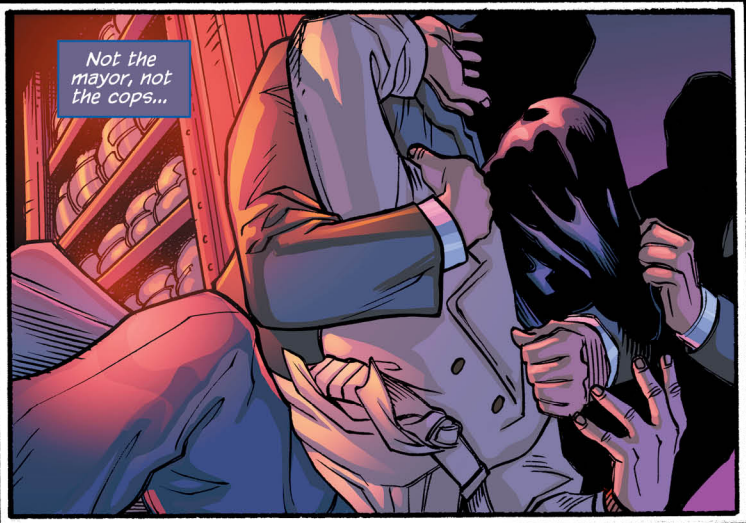
Growing up here, you learn real quick...



When things look bad? No one's coming to save you.



Not the mayor, not the cops...

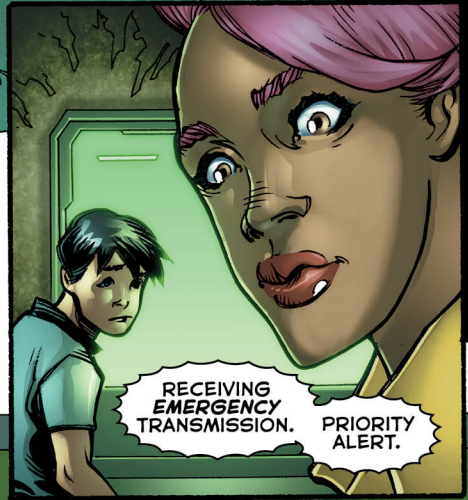


Not even Batman...

THINGS'RE QUIET TONIGHT. MAKES ME ITCHY...

DON'T JINX US, KID.

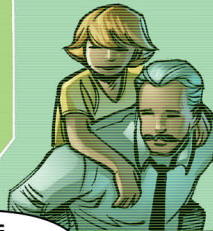
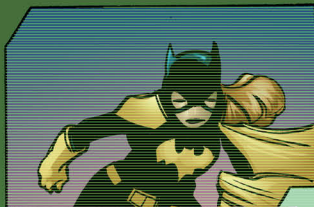
WITH BRUCE AND TERRY OFF CHASING RA'S AL GHUL IN TIBET, I'LL TAKE IT.



DISTRESS BEACON--BARBARA GORDON.



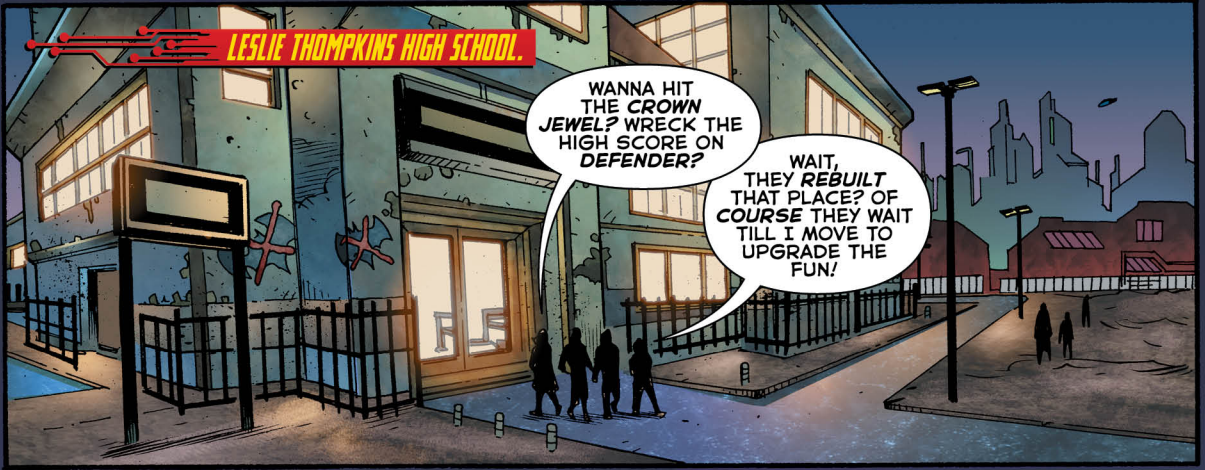
GORDON, BARBARA
GCPD Commissioner
Former Alias: Batgirl
Status: **Missing**



...THE COMMISSIONER?
IT'S BEEN A PICOSECOND.



LESLIE THOMPkins HIGH SCHOOL.



WANNA HIT THE CROWN JEWEL? WRECK THE HIGH SCORE ON DEFENDER?

WAIT, THEY REBUILT THAT PLACE? OF COURSE THEY WAIT TILL I MOVE TO UPGRADE THE FUN!



NO GO FOR ME, DANNY. MOM'S STILL RILED UP ABOUT THE JAY WHITE INCIDENT.

IT WAS ALL I COULD DO TO CONVINCE HER TO LET ME TAKE THESE COLLEGE PREP CLASSES...

...WHAT DID YOU DO, NISSA?



THE CLICK-BAIT VERSION? GIRL UPPERCUTS TEACHER OUTSIDE OF HER SCHOOL--NEWS AT ELEVEN.

WHAT, HE ASSIGN READING FOR THE WEEKEND?

NOPE. BUT HE DID GET CAUGHT SELLIN' TO MIDDLE SCHOOLERS! TOTAL DREG...

DISAPPEARED BEFORE THE COPS COULD GET HIM, TOO!



CRAZY TALK! DID THE BAT GET 'EM?

YEAH, RIGHT! LIKE HE BOTHERS COMING UP HERE.

MIGHT GET HIS FANCY SUIT DIRTY.



"Be real, Danny..."

"...the Batman
doesn't even
know the Point
exists."

BATWOMEN BEYOND

A **BATMAN BEYOND** INTERLUDE BY THE GUEST TEAM OF

VITA AYALA & SIYA DEXTER TONY
STEVE ORLANDO OUM VINES AVIÑA
WRITERS PENCILS INKS COLORS

TRAVIS LANHAM: LETTERS

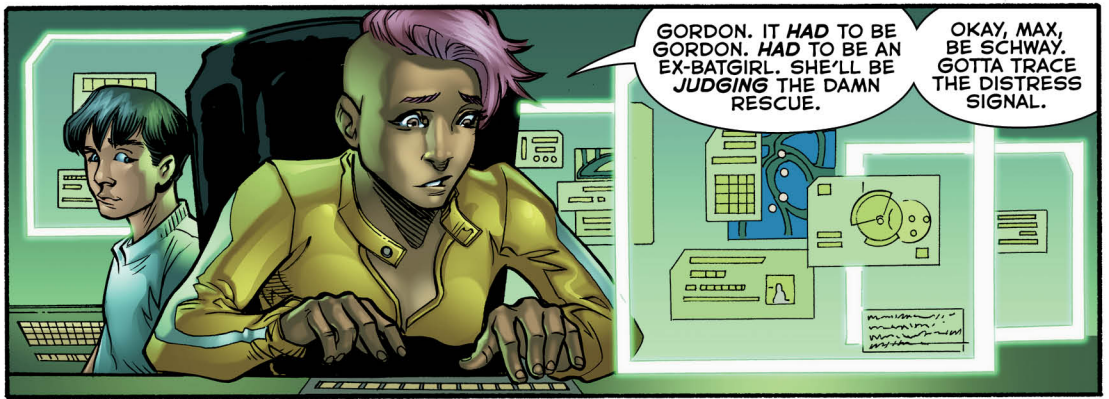
BERNARD CHANG & MARCELO MAIOLO: COVER

DAVE JOHNSON: VARIANT COVER

ROB LEVIN: ASSOCIATE EDITOR JIM CHADWICK: EDITOR

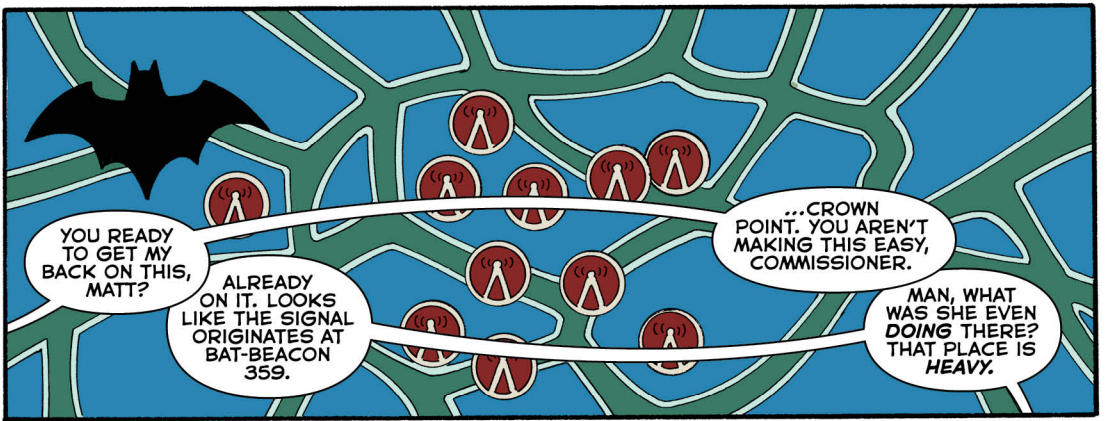
BATMAN CREATED BY BOB KANE WITH BILL FINGER





GORDON. IT HAD TO BE GORDON. HAD TO BE AN EX-BATGIRL. SHE'LL BE JUDGING THE DAMN RESCUE.

OKAY, MAX, BE SCHWAY. GOTTA TRACE THE DISTRESS SIGNAL.

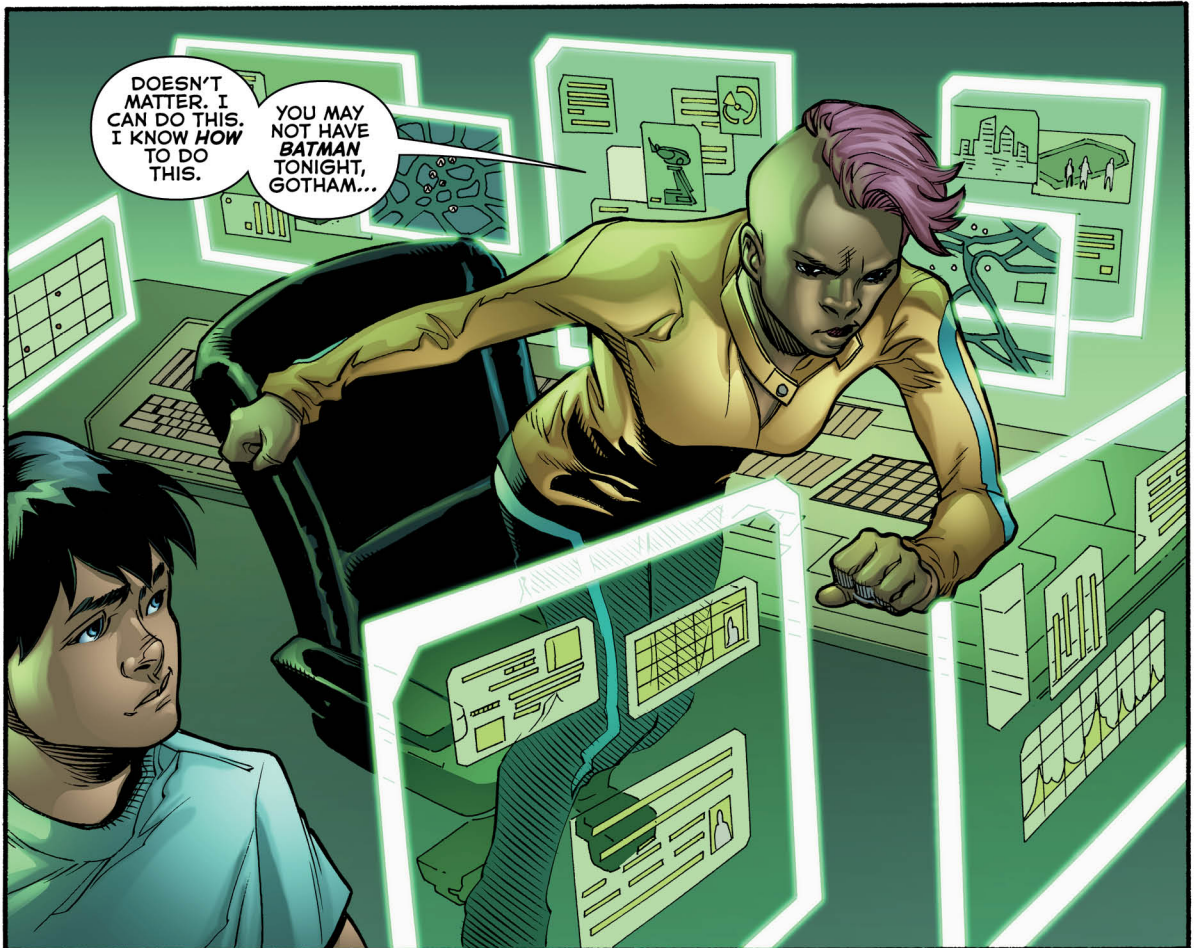


YOU READY TO GET MY BACK ON THIS, MATT?

ALREADY ON IT. LOOKS LIKE THE SIGNAL ORIGINATES AT BAT-BEACON 359.

...CROWN POINT. YOU AREN'T MAKING THIS EASY, COMMISSIONER.

MAN, WHAT WAS SHE EVEN DOING THERE? THAT PLACE IS HEAVY.



DOESN'T MATTER. I CAN DO THIS. I KNOW HOW TO DO THIS.

YOU MAY NOT HAVE BATMAN TONIGHT, GOTHAM...