



WRITTEN BY
BOX BROWN

ILLUSTRATED BY
ILARIA CATALANI

COLORS BY
ELEONORA BRUNI

LETTERS BY
JIM CAMPBELL

COVER BY
JORGE CORONA

SUBSCRIPTION COVER BY
DEREK CHARM
WITH LUNCHBOX DESIGN BY
CAITLYN INGOLDSBY

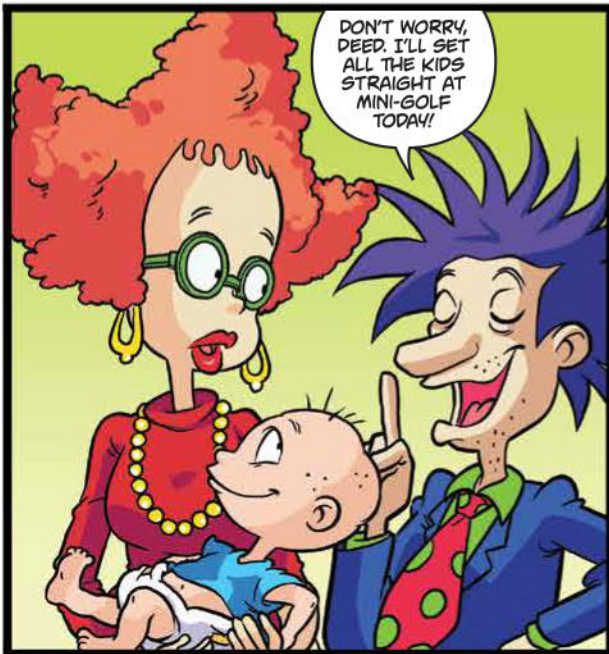
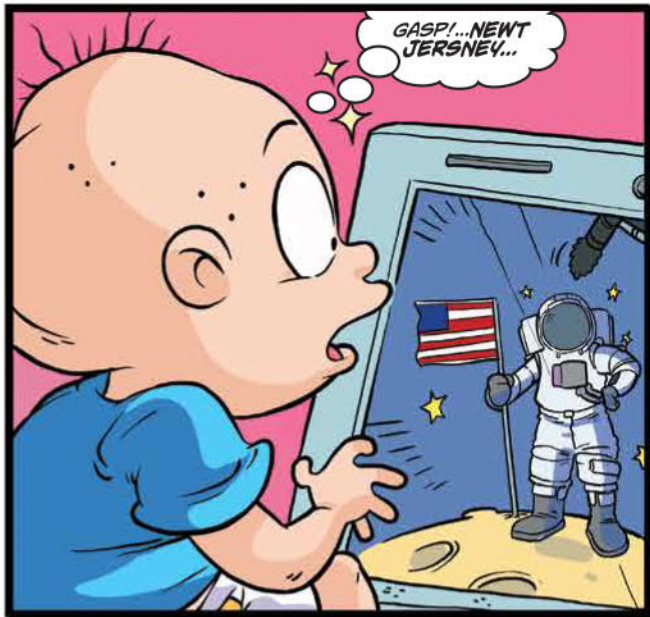
DESIGNER
MICHELLE ANKLEY

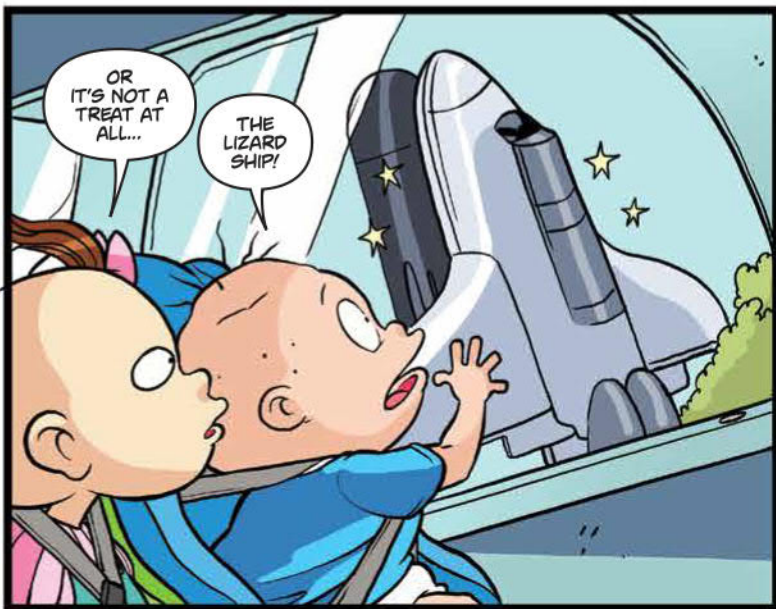
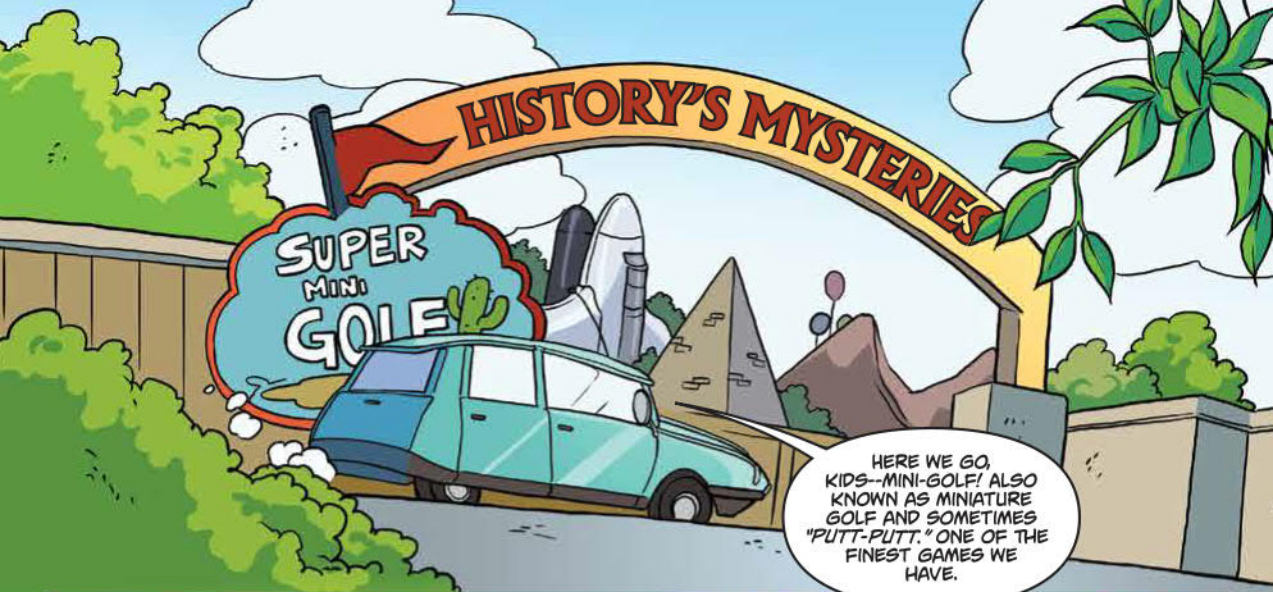
ASSOCIATE EDITOR
MATTHEW LEVINE

EDITOR
WHITNEY LEOPARD



SPECIAL THANKS TO **JOAN HILTY, LINDA LEE, JAMES SALERNO, ALEXANDRA MAURER,**
AND THE WONDERFUL TEAM AT **NICKELODEON**





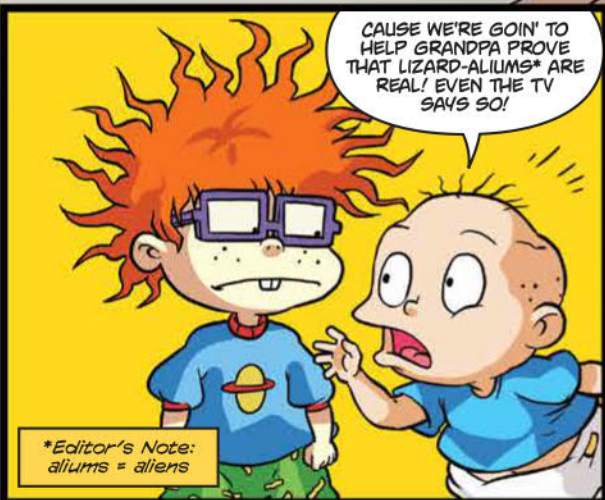
WHAT DO YOU THINK, TOMMY?
THAT'S A SPHINX!



I THINK THE SPHINX
STINKS. THERE'S NO
TREATS HERE. WHY
COULDN'T WE HAVE
JUST GONE TO THE
PLAYGROUND?



CAUSE WE'RE GOIN' TO
HELP GRANDPPA PROVE
THAT LIZARD-ALIUMS* ARE
REAL! EVEN THE TV
SAYS SO!



*Editor's Note:
aliums = aliens

TOMMY, IF THE TV
SAYS SO THEN YOUR
GRANDPPA'S SCARY
STORIES ABOUT
LIZARD-ALIUMS
MUST BE
REAL!



SCARY
DOESN'T COVER
IT, CHUCKIE. IT
MEANS THAT ALL
WE'VE LEARNED
HERE WILL BE
COMPLETE
BALONEY.



WHAT'S
THAT? CHUCKY
IS AFRAID OF
BALONEY
NOW?



