





BIG PLACE.

THE HOUSE DATES BACK TO THE EARLY 19TH CENTURY. OTUNDE'S BEEN HERE FOR AT LEAST A DECADE, AS FAR AS WE'VE BEEN ABLE TO ASCERTAIN. HE'S BEEN A **POWER BROKER** IN THE SUPERNATURAL COMMUNITY FOR LONGER THAN THAT.



WE'LL HAVE TO RISK A **LIGHT** TO FIND WHAT WE'RE LOOKING FOR.

DON'T BOTHER...



...I'VE GOT IT. **THIS** COMES IN HANDY TOO.



YOUR BOSS ISN'T THE **ONLY ONE** WITH A COLLECTION.

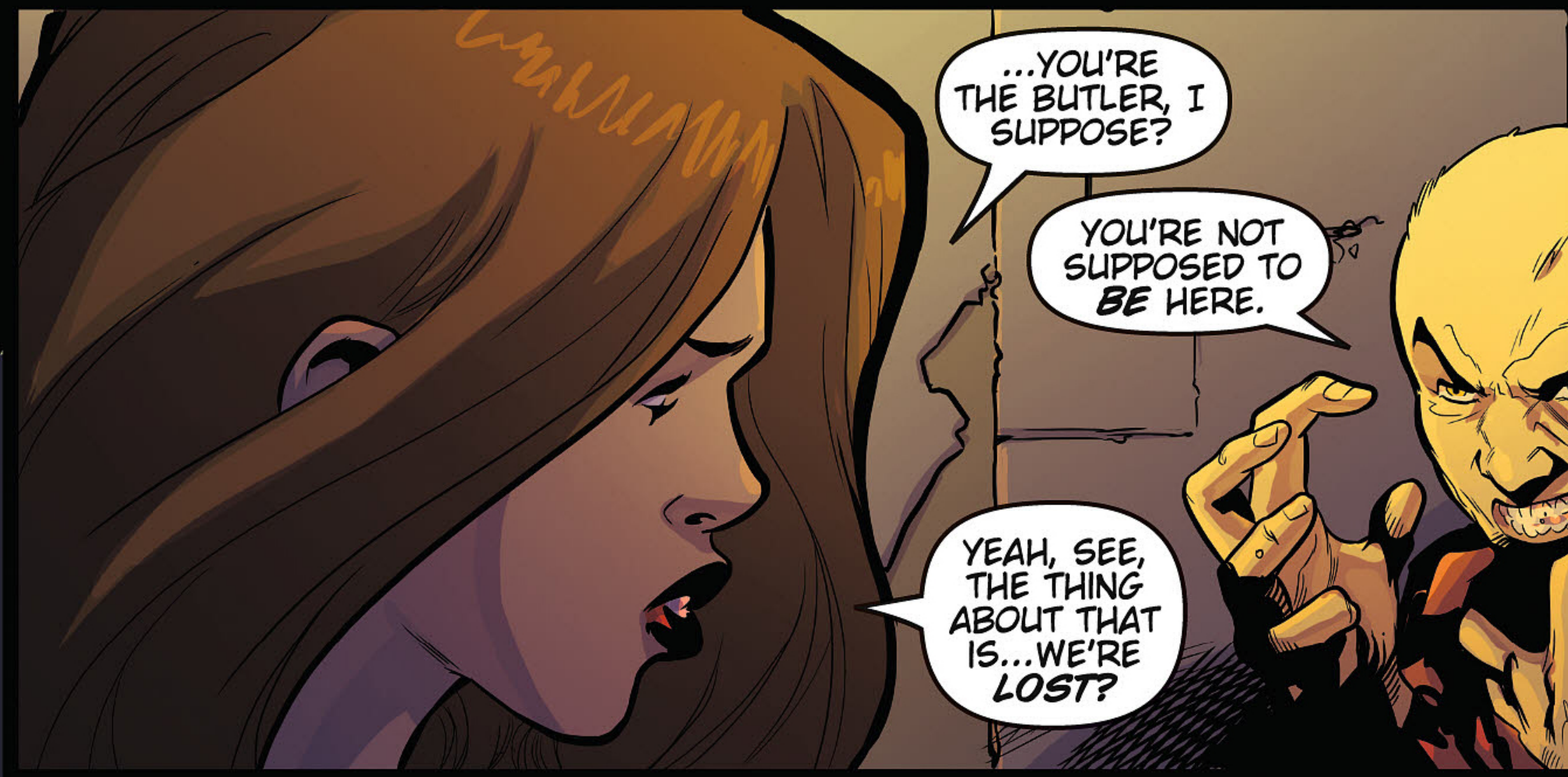
NO, OTUNDE HAS QUITE THE IMPRESSIVE ARRAY AS WELL. BUT WE'RE ONLY HERE FOR **ONE** ITEM.



THEN
LET'S FIND IT
AND GET OUT
OF HERE.



OH
BOY...



...YOU'RE
THE BUTLER, I
SUPPOSE?

YOU'RE NOT
SUPPOSED TO
BE HERE.

YEAH, SEE,
THE THING
ABOUT THAT
IS...WE'RE
LOST?



WE'RE
JEHOVAH'S
WITNESSES?

DID YOU THINK
THERE WOULD BE NO
SAFEGUARDS...

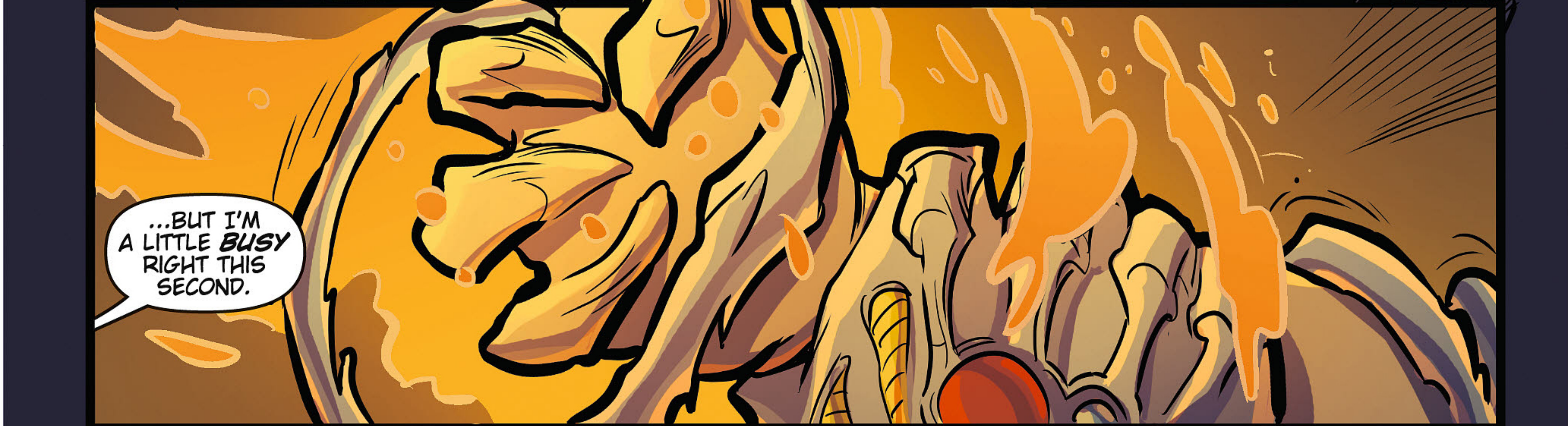
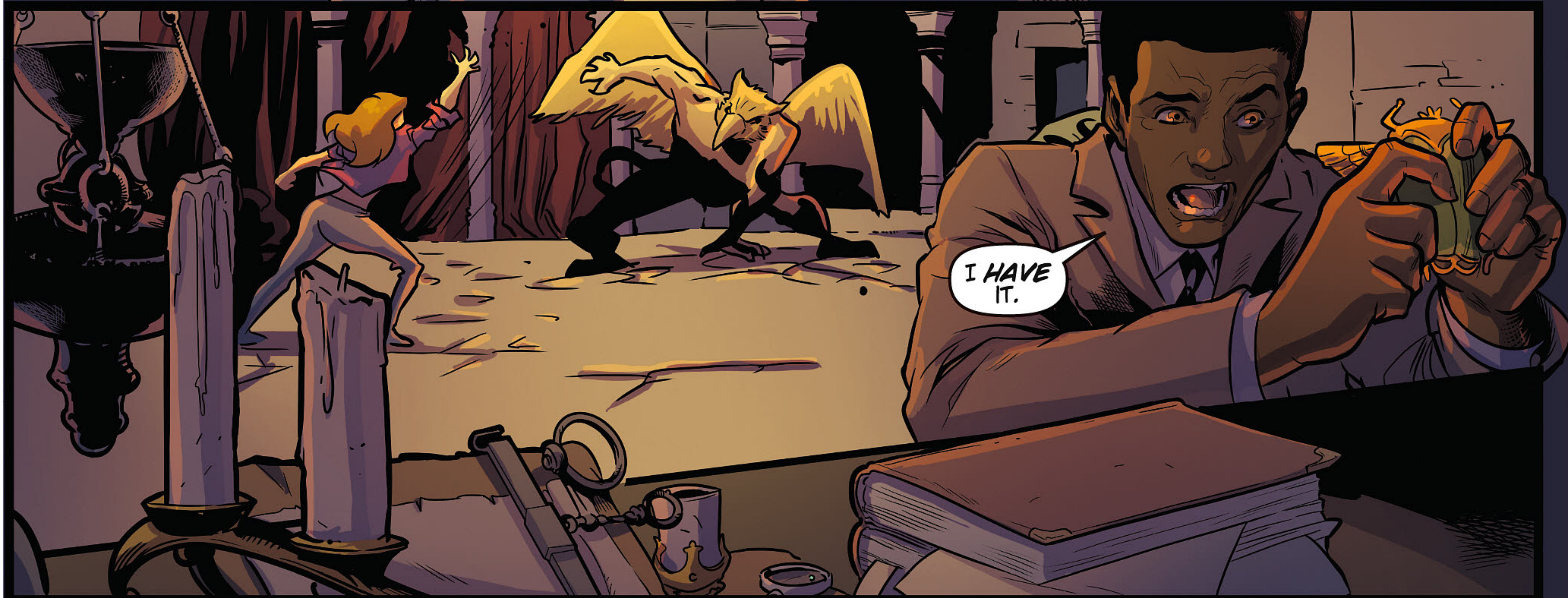


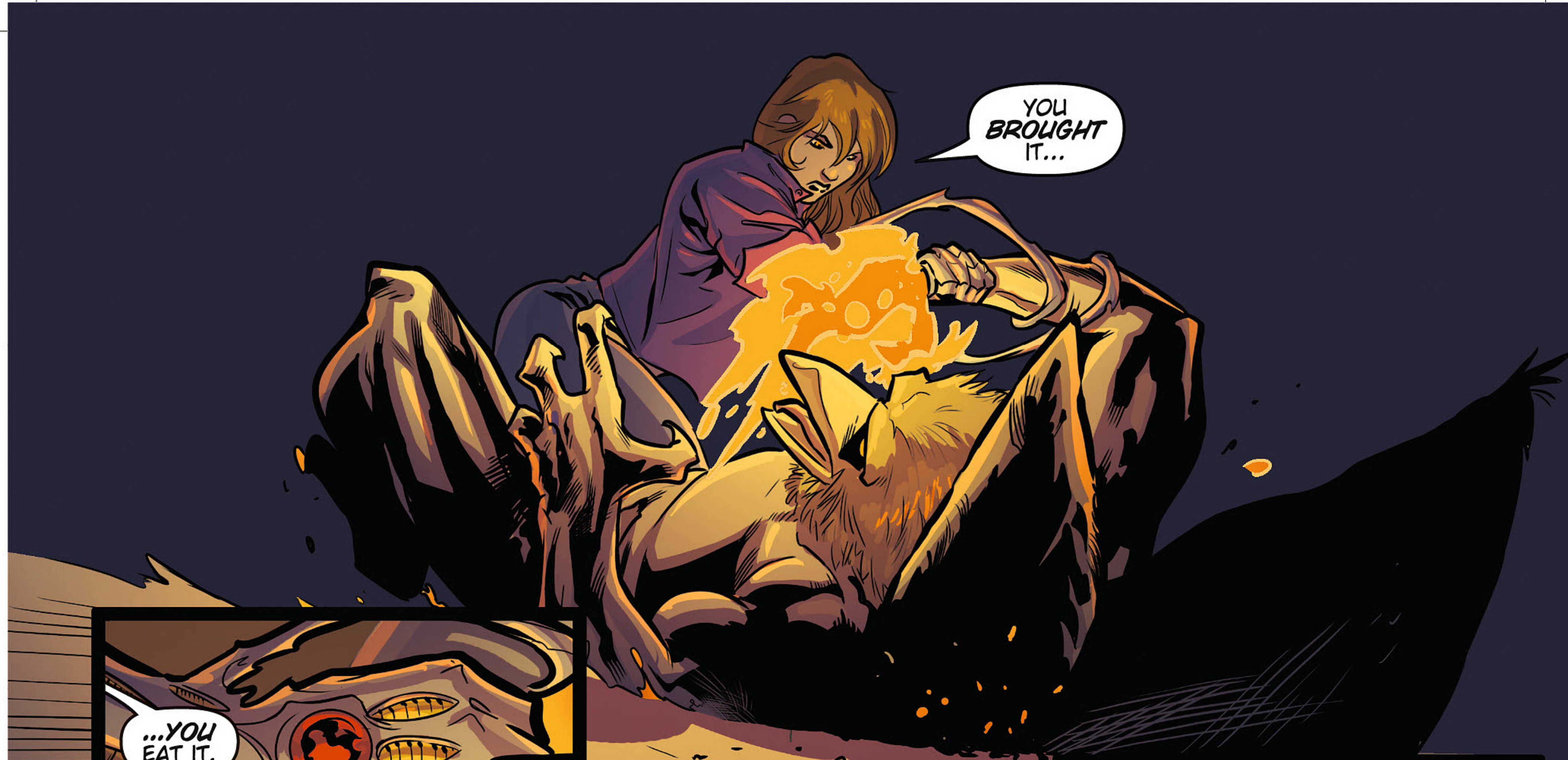
WE'RE
SELLING
GIRL SCOUT
COOKIES?

...NO
PUNISHMENT?



GKREEEE



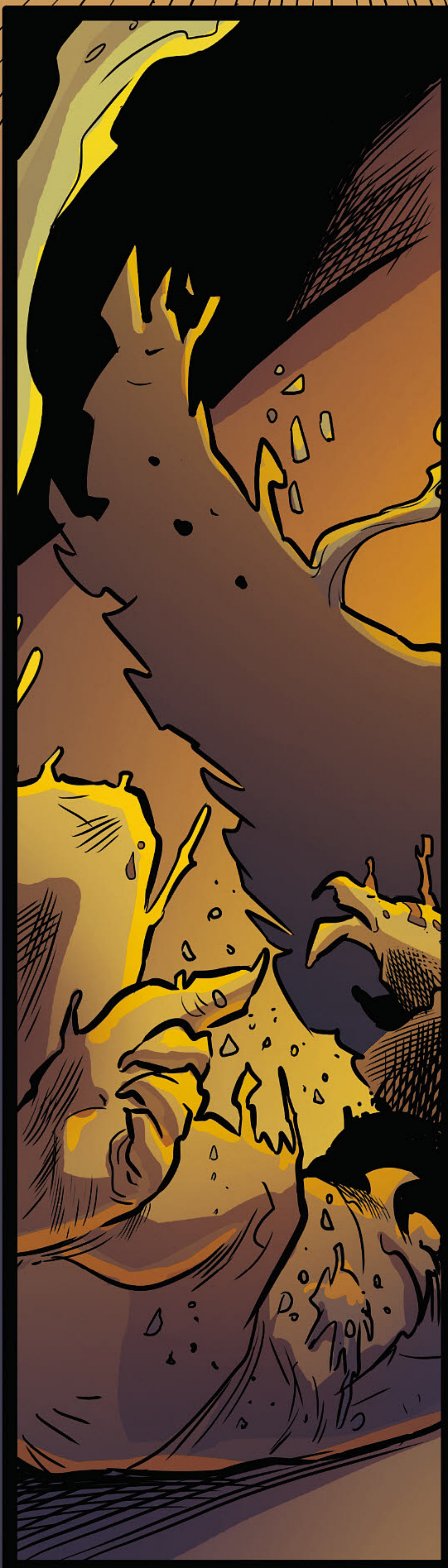


YOU
BROUGHT
IT...



...YOU
EAT IT.

YAAGH!



YOU HAVE
INVADED MY
HOME.

THIS DOES
NOT *PLEASE*
ME.

THE
SLAUGHTER OF
MY *SERVANT*
PLEASES ME
EVEN LESS.

OTUNDE?

WHO ARE
YOU, THAT
YOU *DARE*
STEAL FROM
OTUNDE?!