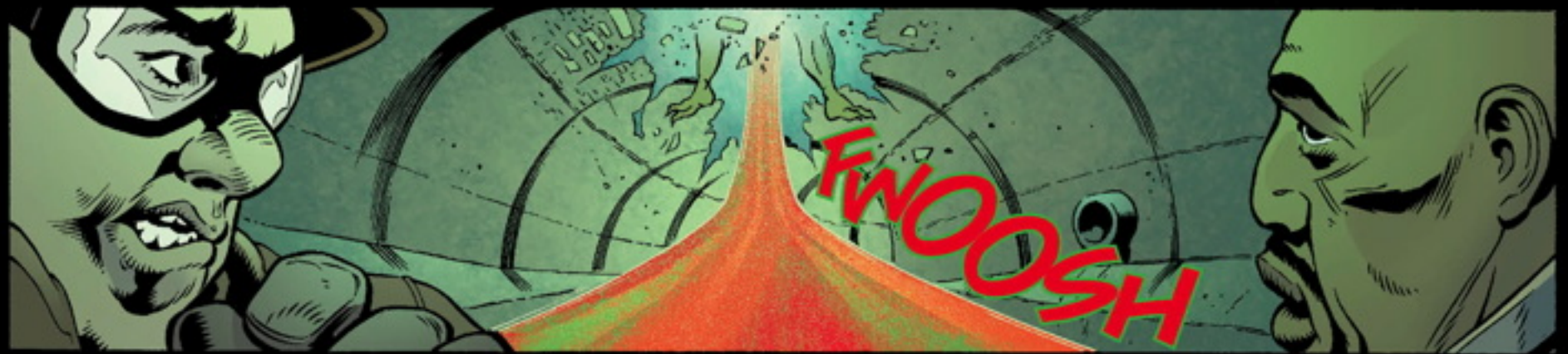




ICEBERG CASINO.



GOTHAM SEWERS.



ROBINSON PARK.











...AND ALL OF YOU.



THAT'S GOOD TO HEAR--



--BECAUSE THEN THERE'LL BE NO WITNESSES--



--WHEN WE BEAT YOU TO DEATH!

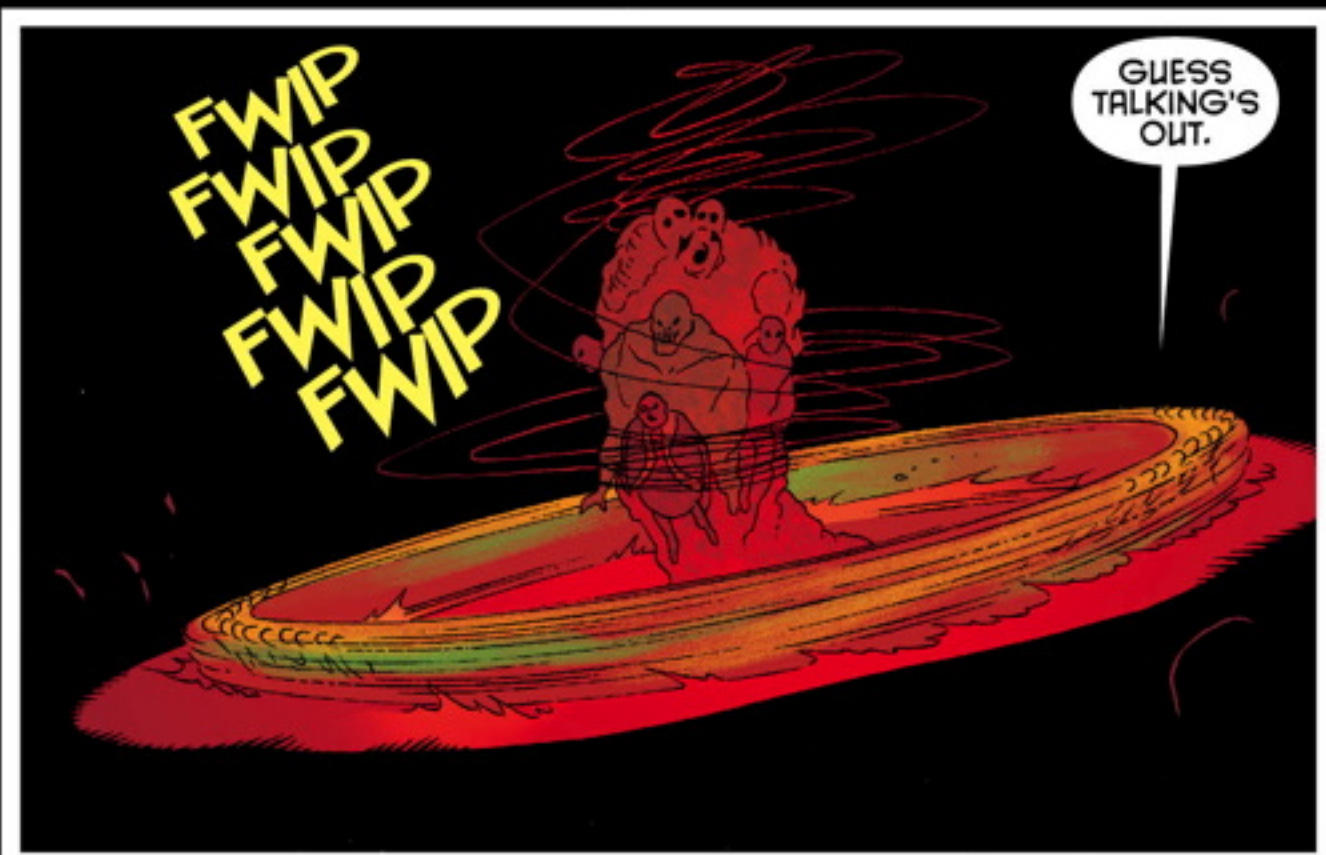
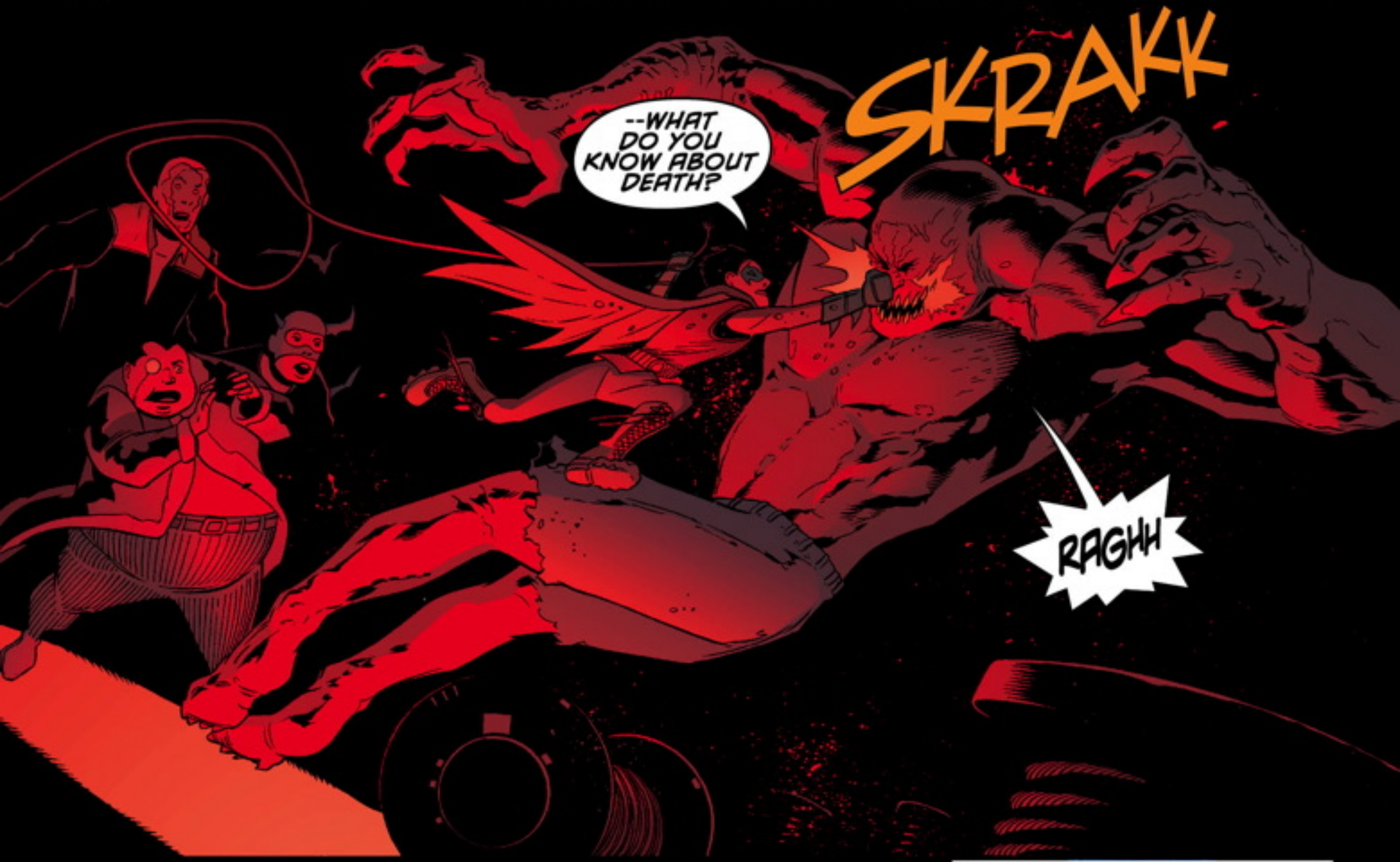
WHAMMM



ARE YOU INSANE?!

HARMING THE BRAT WILL MAKE BATMAN ZERO IN ON US LIKE NEVER BEFORE!









--OF GOTHAM'S  
NEW POWER  
PARADIGM!

THE  
KID CAN  
FLY?!?

SINCE  
WHEN?!?

OBVIOUSLY  
SINCE NOW,  
IDIOTS!



YOU'RE FEELING A  
LITTLE COLD BECAUSE  
WE'RE THIRTY THOUSAND  
FEET HIGH IN THE  
TROPOSPHERE.

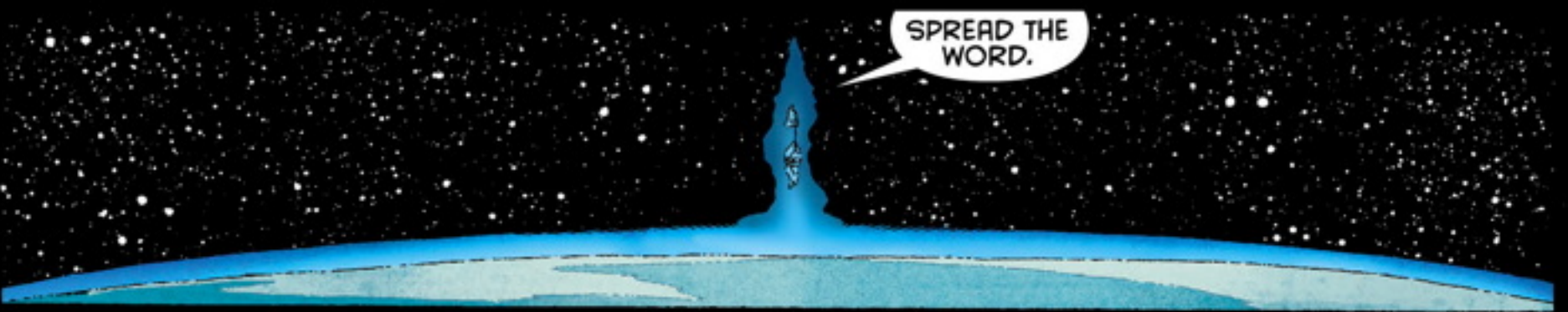
BUT IT  
COULD GET  
A LOT COLDER IF  
YOU CROSS THE LINE  
IN GOTHAM AND  
MURDER INNOCENT  
PEOPLE...

...BECAUSE  
THEN I'D MAKE  
SURE YOU CROSS  
A LINE *UP HERE* YOU  
WON'T BE ABLE  
TO SEE.



IT'S CALLED  
THE *KARMAN*  
LINE.

AND IT'S  
THE DIFFERENCE  
BETWEEN BEING AN  
EARTHLING OR AN  
ASTRONAUT.



SPREAD THE  
WORD.



TELL  
ALL YOUR  
*FRIENDS...*