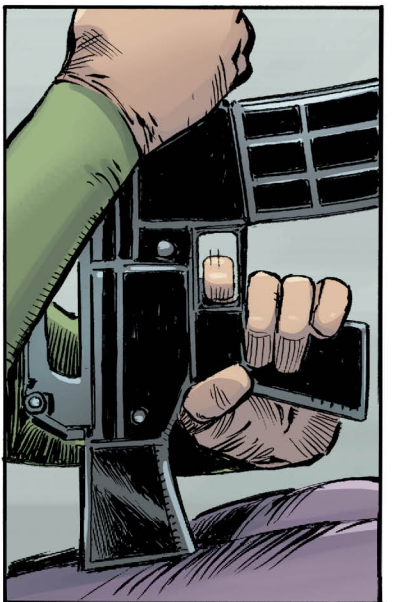
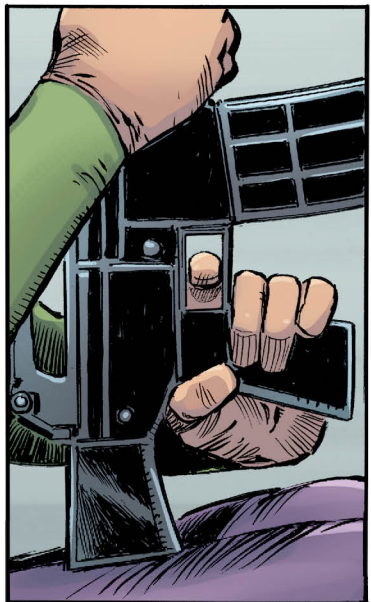
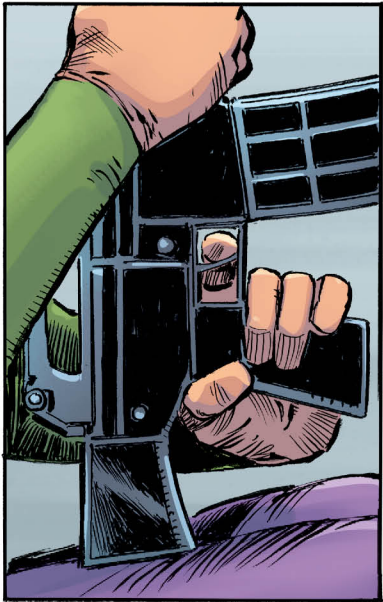
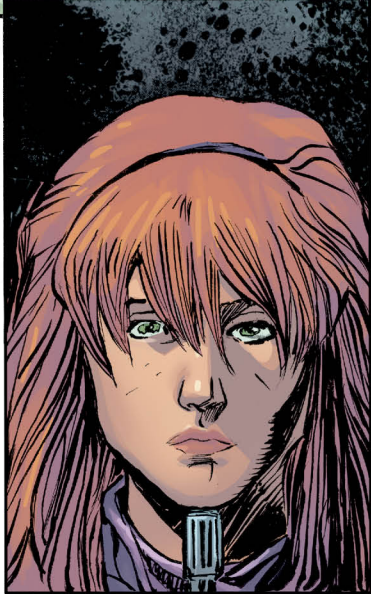
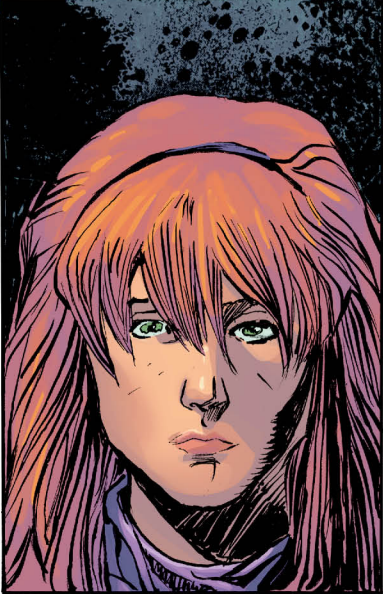
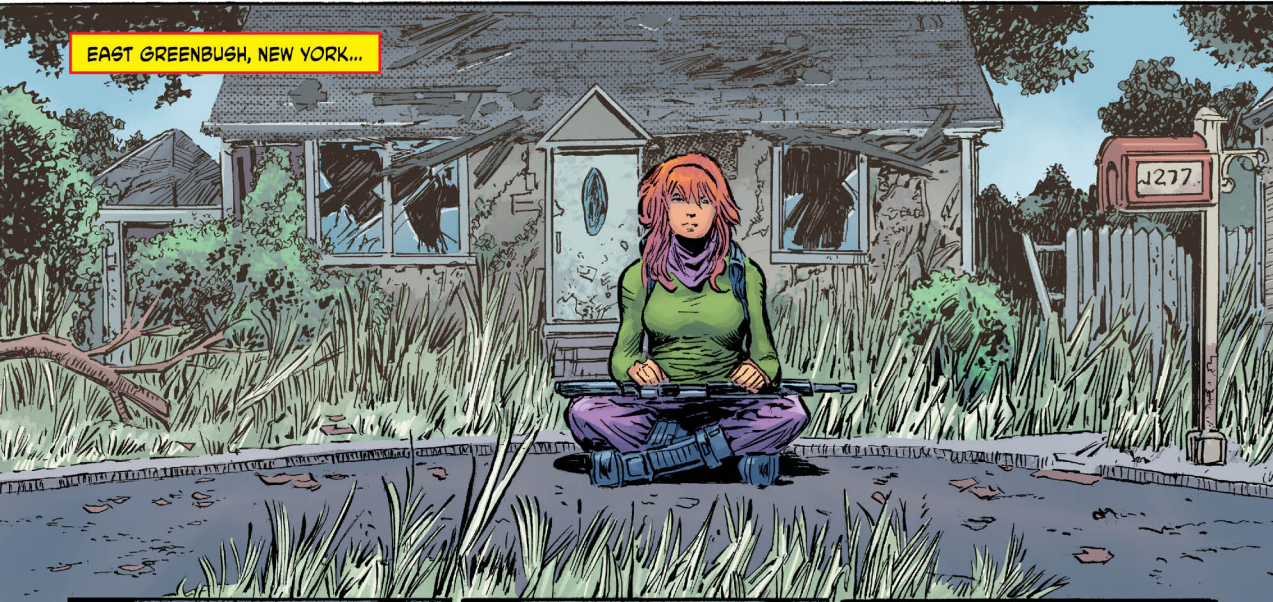


EAST GREENBUSH, NEW YORK...



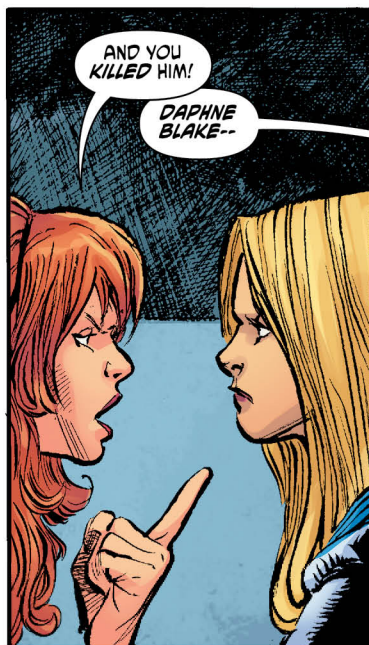
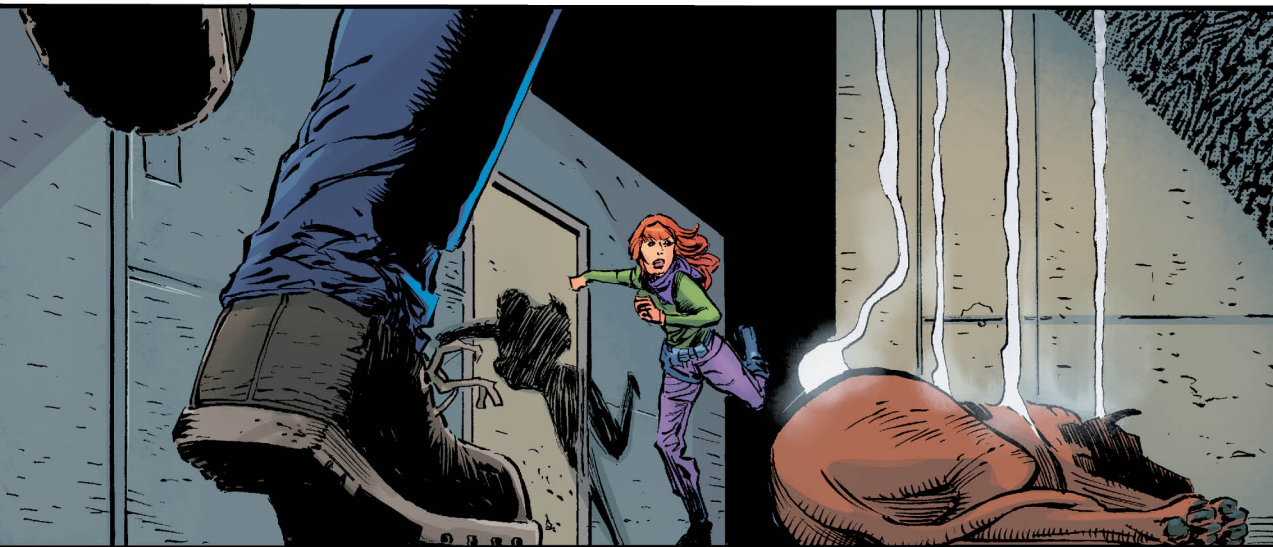


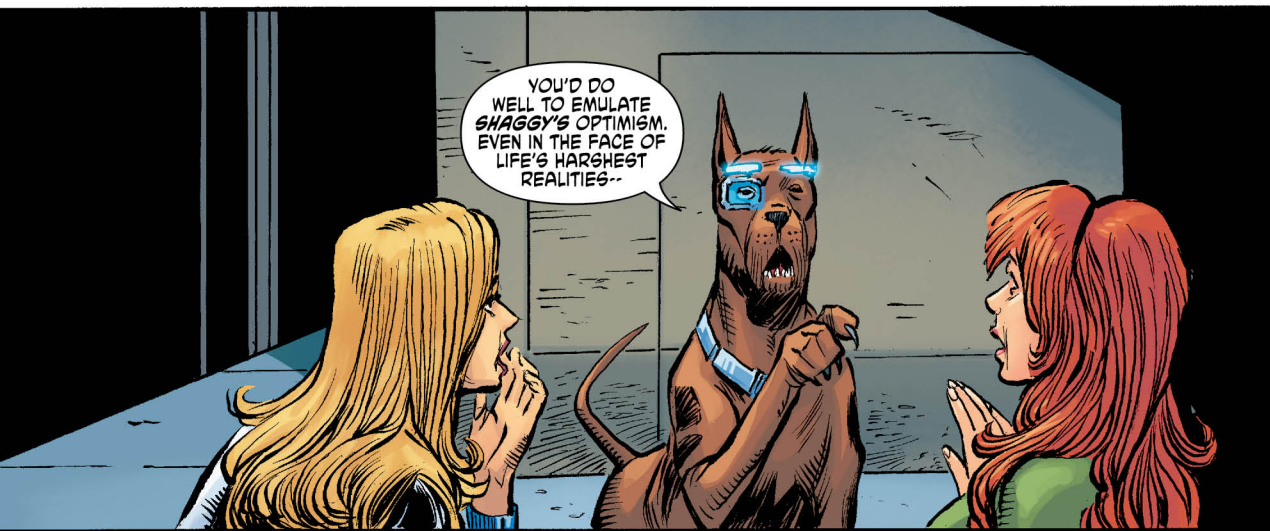
SCOOBY!

SCOOBY APOCALYPSE NIGHT OF THE LIVING FRED!*

KEITH GIFFEN & J.M. DeMATTEIS: writers
PAT OLLIFFE & TOM PALMER: artists HI-FI: colors
TRAVIS LANHAM: letters OLLIFFE & PALMER with HI-FI: cover
JAMES HARREN: variant cover LIZ ERICKSON: assistant editor
HARVEY RICHARDS: editor JIM CHADWICK: idol of millions

*Title courtesy
of little
SPENCER BECK
of Crystal Cove,
California.





YOU'D DO WELL TO EMULATE SHAGGY'S OPTIMISM. EVEN IN THE FACE OF LIFE'S HARSH REALITIES--



--THE ESTIMABLE MR. ROGERS KEEPS HIS HEAD HIGH AND HIS EYES FOCUSED ON THE GOOD! IN FACT HE--

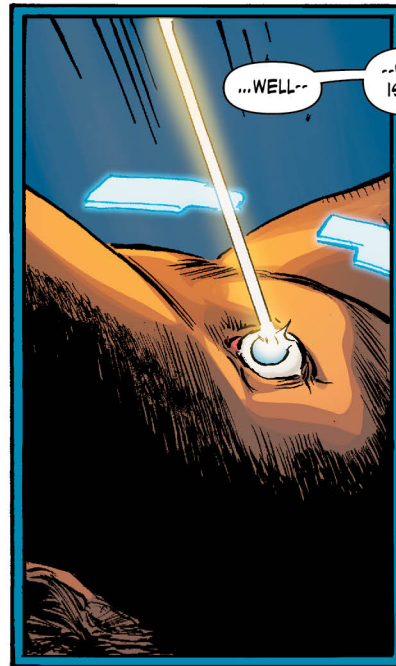


W-WAIT A MINUTE.



WHAT AM I SAYING?

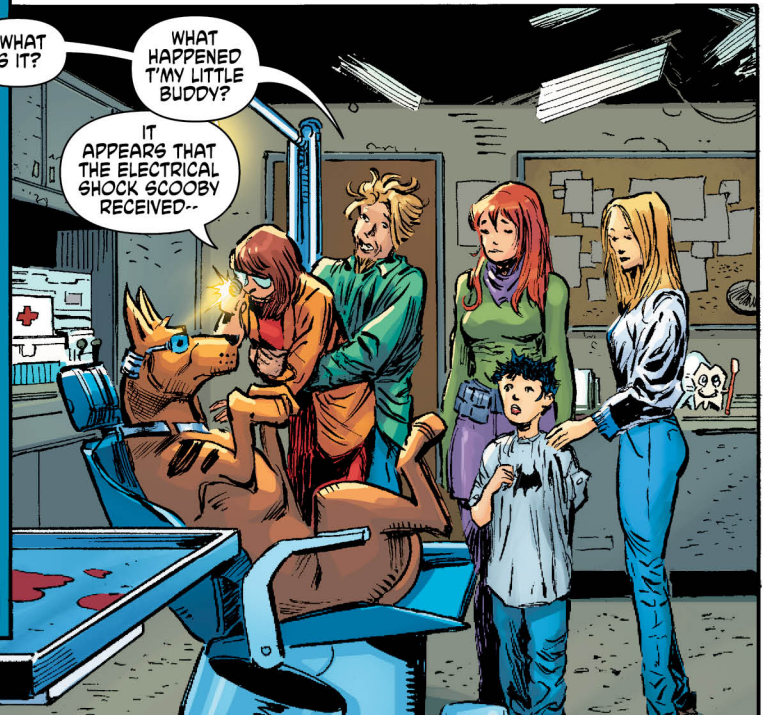
AND HOW IN HEAVEN'S NAME AM I SAYING IT?!



...WELL--

--WHAT IS IT?

WHAT HAPPENED T'MY LITTLE BUDDY?

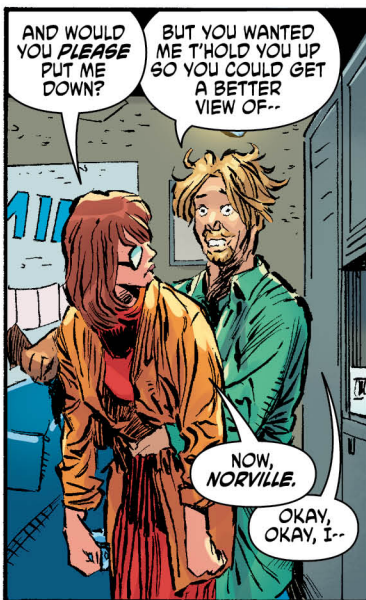


IT APPEARS THAT THE ELECTRICAL SHOCK SCOOBY RECEIVED--



--HAD A DIRECT, AND RATHER DRAMATIC, IMPACT ON HIS IMPLANTS.

IF YOU RECALL, SCOOBY-DOO WAS ONE OF THE FIRST EXPERIMENTAL CANINES IN THE COMPLEX'S "SMART DOG" PROGRAM AND--



AND WOULD YOU PLEASE PUT ME DOWN?

BUT YOU WANTED ME T'HOLD YOU UP SO YOU COULD GET A BETTER VIEW OF--

NOW, NORVILLE.

OKAY, OKAY, I--



WAIT. DID SHE, LIKE, JUST CALL ME "NORVILLE"?

AS I WAS SAYING: SCOOBY WAS ONE OF THE FIRST EXPERIMENTAL CANINES IN THE PROGRAM. AND SADLY--



--ONE OF OUR FIRST FAILURES.

OH, THE ENCEPHALONIC UPGRADES GRANTED HIM A LIMITED MEASURE OF SPEECH--BUT THE OTHER DOGS, AS EVIDENCED BY SCRAPPY-DOO--

--ATTAINED A LEVEL OF INTELLIGENCE AND VERBAL EXPRESSION FAR BEYOND HIS.

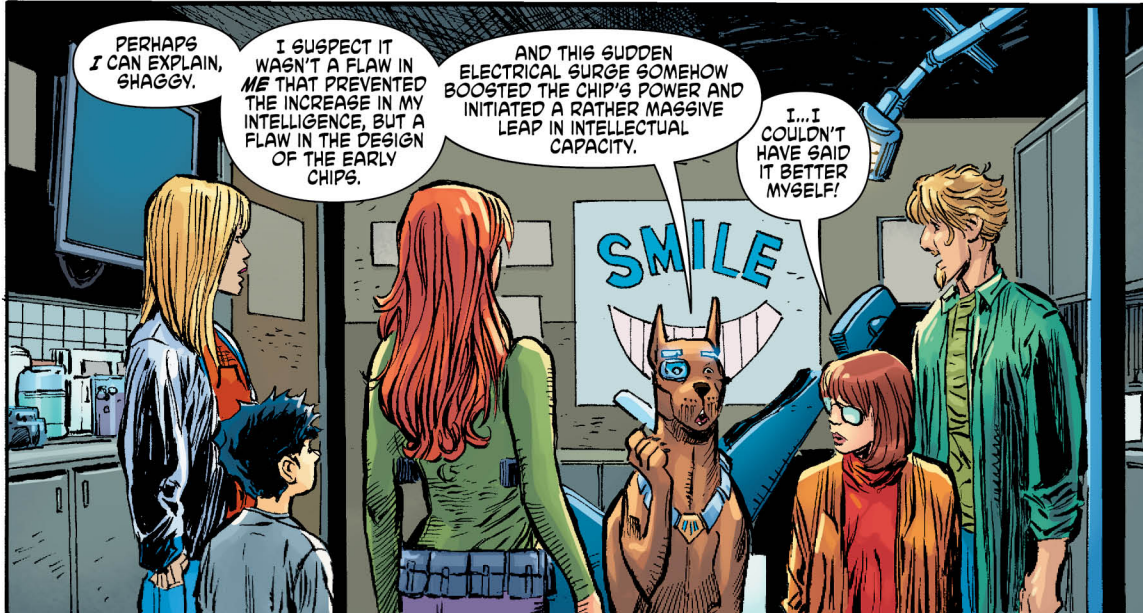


THEN, LIKE, HOW D'YOU EXPLAIN THIS?

SIGH: I'M GETTING TO THAT, NORVILLE.

THERE SHE GOES AGAIN WITH THE "NORVILLE"!

NOW, AS I WAS SAYING--



PERHAPS I CAN EXPLAIN, SHAGGY.

I SUSPECT IT WASN'T A FLAW IN ME THAT PREVENTED THE INCREASE IN MY INTELLIGENCE, BUT A FLAW IN THE DESIGN OF THE EARLY CHIPS.

AND THIS SUDDEN ELECTRICAL SURGE SOMEHOW BOOSTED THE CHIP'S POWER AND INITIATED A RATHER MASSIVE LEAP IN INTELLECTUAL CAPACITY.

I...I COULDN'T HAVE SAID IT BETTER MYSELF!