

PANARO • GRAY • FRECCERO • PRINTZ-PAHLSON • RIOS

IDW
ISSUE
21
(388)
\$3.99

Walt Disney's
Donald Duck



THIS ROCK PEDESTAL MUST HAVE **BUFFERED** IT—PROTECTING IT FROM THE VIOLENT FORCES OF THE QUAKE!



Story 1
Helmet of the Gods (Part 2 of 2)
 from Italian *Topolino* 2907, 2011 (First USA Publication)

WRITER Carlo Panaro
 ARTIST Andrea Freccero
 COLORIST Disney Italia with Nicole and Travis Seitler
 LETTERER Nicole and Travis Seitler
 TRANSLATION AND DIALOGUE Jonathan H. Gray

Walt Disney's Donald Duck



BEAR OR DOG, HE CLIMB TREES LIKE CAT!

Story 2
Oona's Shopping Maul
 from Danish *Anders And & Co.* 5/1996
 (First USA Publication)

WRITER Stefan and Unn Printz-Pählson
 ARTIST Victor "Vicar" Arriagada Rios
 COLORIST Digikore Studios
 LETTERER Nicole and Travis Seitler
 TRANSLATION AND DIALOGUE Joe Torcivia

REGULAR COVER Giorgio Cavazzano
 REGULAR COVER COLORS Cyrille Leriche
 SUB COVER Francisco Rodriguez Peinado
 SUB COVER COLORS Susan Kolberg
 RI COVER Massimo Fecchi
 RI COVER COLORS Fabio Lo Monaco



NOW, LOPHOLT—GIVE ME MY HELMET.



EDITOR Chris Cerasi
 PUBLISHER Ted Adams
 ARCHIVAL EDITOR David Gerstein
 IFC DESIGNER Paul Hornschemeier
 COVER DESIGNER Tom B. Long

Special thanks to Eugene Paraszczuk, Julie Dorris, Carlotta Quattrococo, Manny Mederos, Chris Troise, Roberto Santillo, Camilla Vedove, and Stefano Ambrosio.

For international rights, contact licensing@idwpublishing.com

IDW[®]
www.IDWPUBLISHING.com

Ted Adams, CEO & Publisher • Greg Goldstein, President & COO • Robbie Robbins, EVP/Sr. Graphic Artist • Chris Ryall, Chief Creative Officer • David Hedgecock, Editor-in-Chief • Laurie Windrow, Senior Vice President of Sales & Marketing • Matthew Ruzicka, CPA, Chief Financial Officer • Lorelei Bunjes, VP of Digital Services • Jerry Bennington, VP of New Product Development

Facebook: [facebook.com/idwpublishing](https://www.facebook.com/idwpublishing) • Twitter: [@idwpublishing](https://twitter.com/idwpublishing) • YouTube: [youtube.com/idwpublishing](https://www.youtube.com/idwpublishing)
 Tumblr: tumblr.idwpublishing.com • Instagram: [instagram.com/idwpublishing](https://www.instagram.com/idwpublishing)



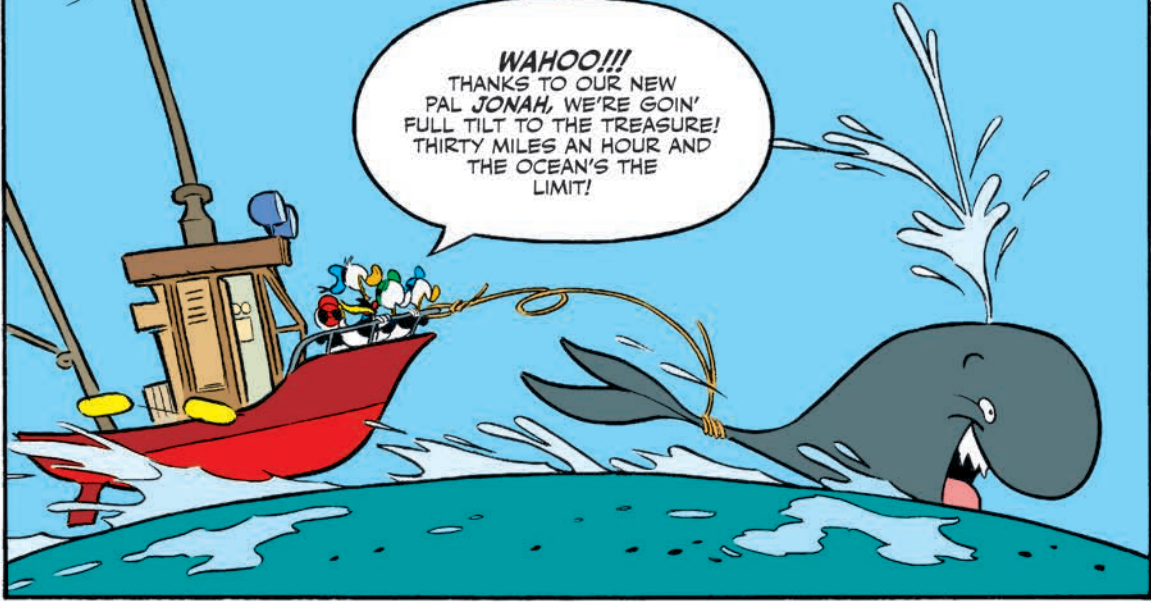
DONALD DUCK #21 (Legacy #388), JUNE 2017. FIRST PRINTING. All contents, unless otherwise specified, copyright © 2017 Disney Enterprises, Inc. All rights reserved. IDW Publishing, a division of Idea and Design Works, LLC. Editorial offices: 2765 Truxtun Road, San Diego, CA 92106. The IDW logo is registered in the U.S. Patent and Trademark Office. Any similarities to persons living or dead are purely coincidental. With the exception of artwork used for review purposes, none of the contents of this publication may be reprinted without the permission of Idea and Design Works, LLC. Printed in Korea.
 IDW Publishing does not read or accept unsolicited submissions of ideas, stories, or artwork.

Donald Duck AND THE HELMET OF THE GODS

WALT DISNEY

IN FARAWAY NORWAY, DONALD AND HIS NEPHEWS DISCOVERED A RUNESTONE DETAILING THE HISTORIC VOYAGE OF A FORGOTTEN VIKING RAIDER: LEIF THE LEGENDARY! THIS RESULTED IN OUR HEROES ALLYING WITH A NEW COMPANION—LOCAL VIKING HISTORIAN PROF. OLEG OWLSON! TOGETHER, OUR MOTLEY CREW—PLUS ONE BABY WHALE (???)—ARE TRAILING THE MYTHICAL CRYSTAL HELMET OF THE NORSE GOD ODIN...

Part Two

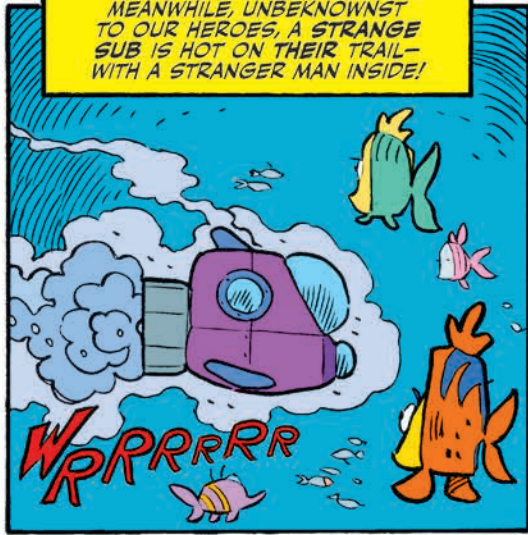


WAHOO!!!
THANKS TO OUR NEW
PAL JONAH, WE'RE GOIN'
FULL TILT TO THE TREASURE!
THIRTY MILES AN HOUR AND
THE OCEAN'S THE
LIMIT!



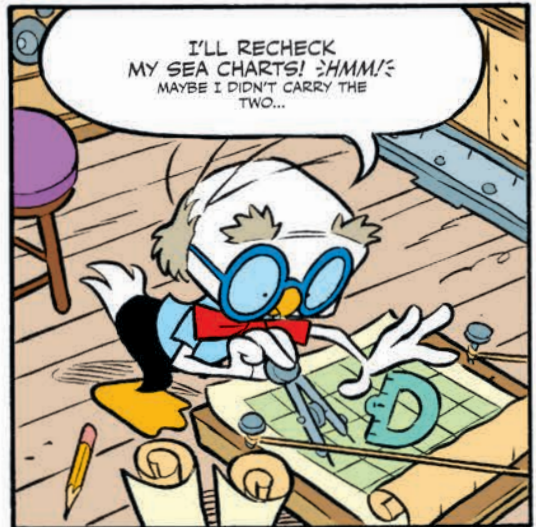
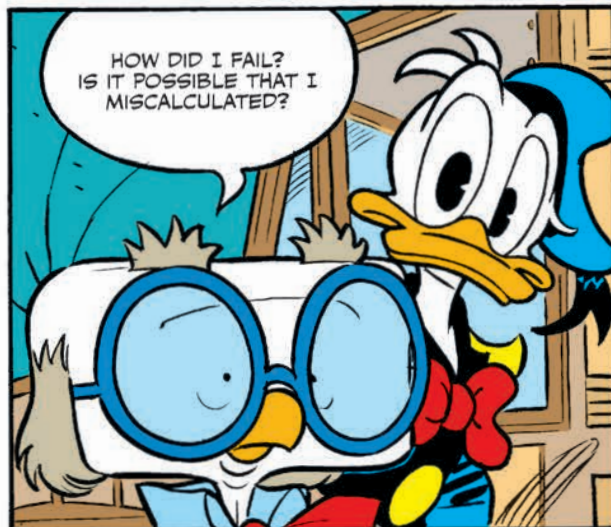
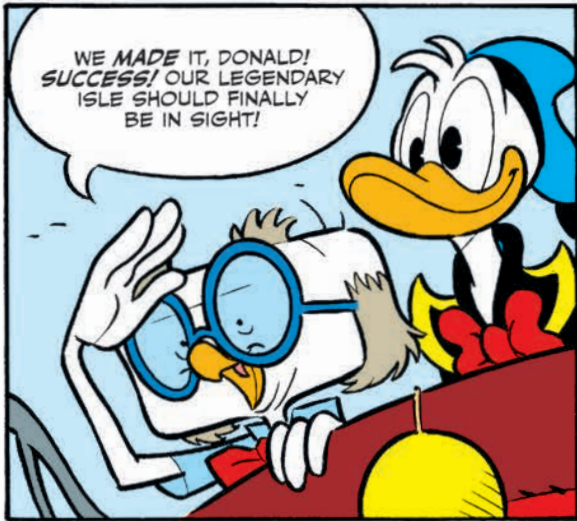
HEY, PROF! HOW
LONG TILL WE GET
TO THAT ISLAND?

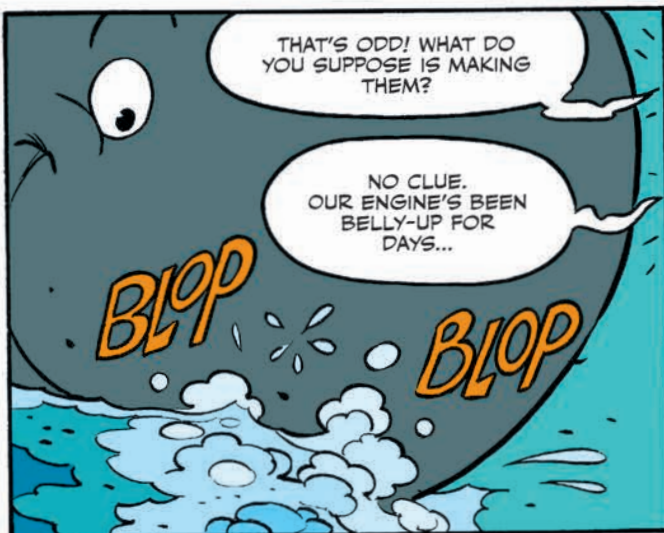
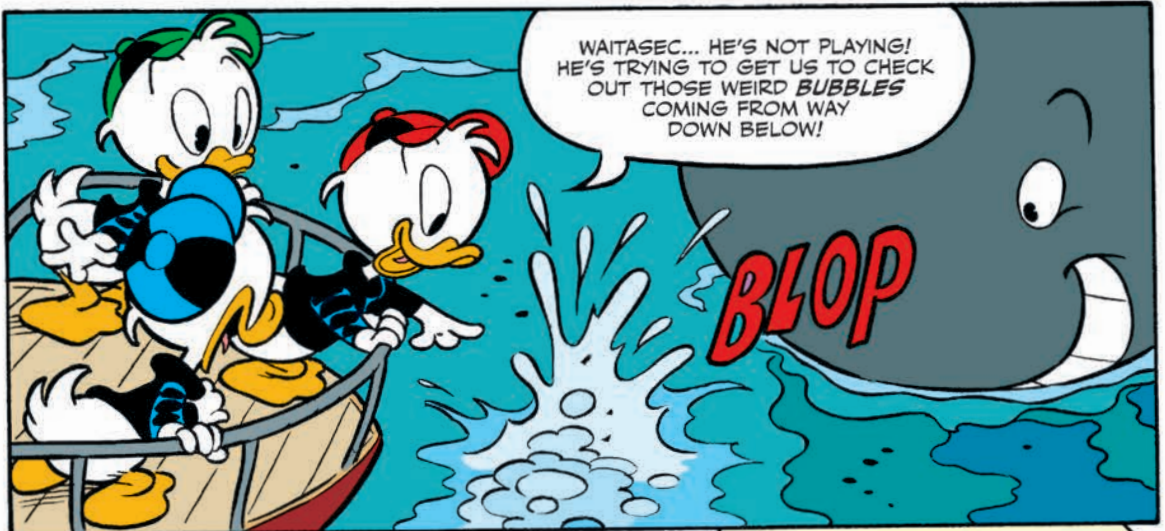
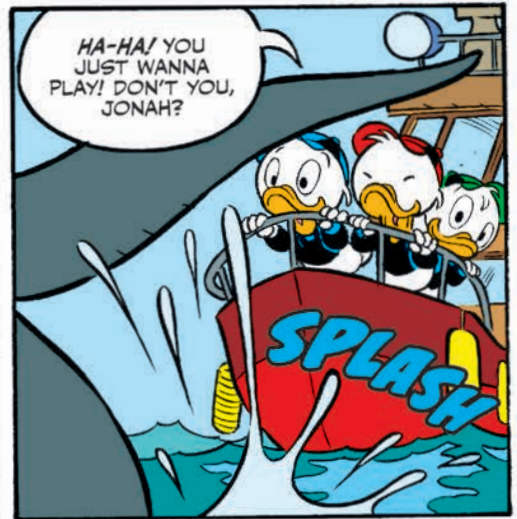
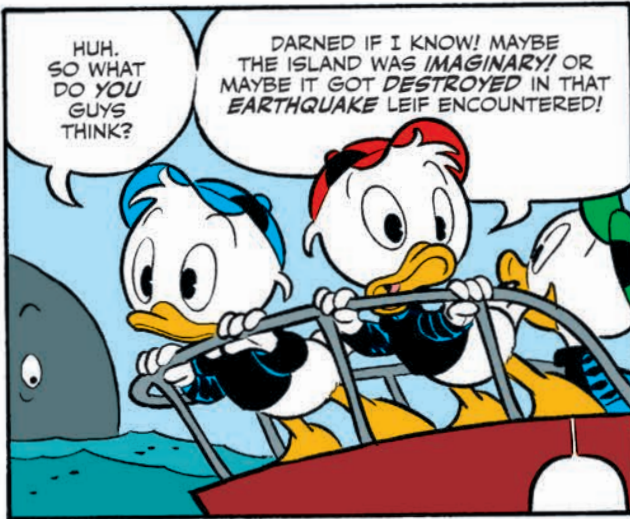
NOT MUCH
FURTHER! ACCORDING
TO MY CALCULATIONS,
WE SHOULD BE
ARRIVING
SOON!



MEANWHILE, UNBEKNOWNST
TO OUR HEROES, A STRANGE
SUB IS HOT ON THEIR TRAIL—
WITH A STRANGER MAN INSIDE!

WRRRRRR





A
LITTLE
LATER!

;>SIGH;< I DON'T GET IT! I'VE REDONE THESE CALCULATIONS TEN TIMES OVER, AND I HAVE NO DOUBT—THIS SPOT IS THE EXACT ENDPOINT OF LEIF THE LEGENDARY'S SEVENTH SUN SAILING ROUTE!

;>SUPER-SIGH!;< OH, WELL... I GUESS THE LEGEND REALLY WAS A GREAT BIG BALL OF SWAMP GAS. OUR MYTHICAL ISLAND DOESN'T EXIST.

;>BZZT!;< WRONG AGAIN, UNCA DONALD!

WE JUST CAME BACK FROM A DIVE... AND YOU'LL NEVER GUESS WHAT WE SAW!

NO WAY...

YES WAY! A VOLCANIC ISLE!

A SUNKEN VOLCANIC ISLE... COURTESY OF YOUR LOCAL ANCIENT EARTHQUAKE!

THE ISLAND'S CENTRAL CRATER IS CLOSED! IT'S ENCASED IN A THICK CRUST OF PILLOWED IGNEOUS ROCK—A.K.A. HARDENED LAVA!

BUT THE LAVA HAS FORMED A LATERAL CONE THAT'S DRIBBLING OUT VOLCANIC GAS! AND THAT GAS IS REACHING THE SURFACE, RIGHT BY OUR BOAT, IN THE FORM OF AIR BUBBLES!

INCREDIBLE!

