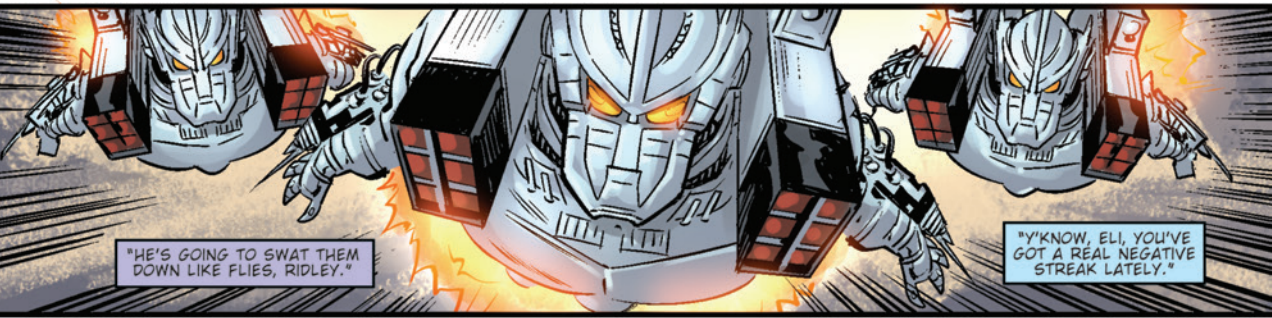




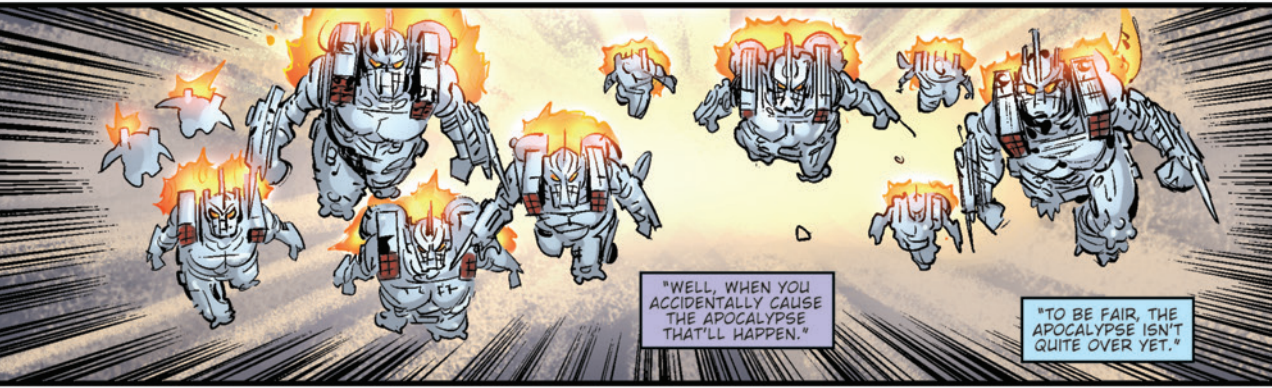
"WHY DIDN'T YOU JUST BUILD ONE GIANT ONE?"

"YOU CAN'T JUST SAY 'GOOD JOB,' CAN YOU?"



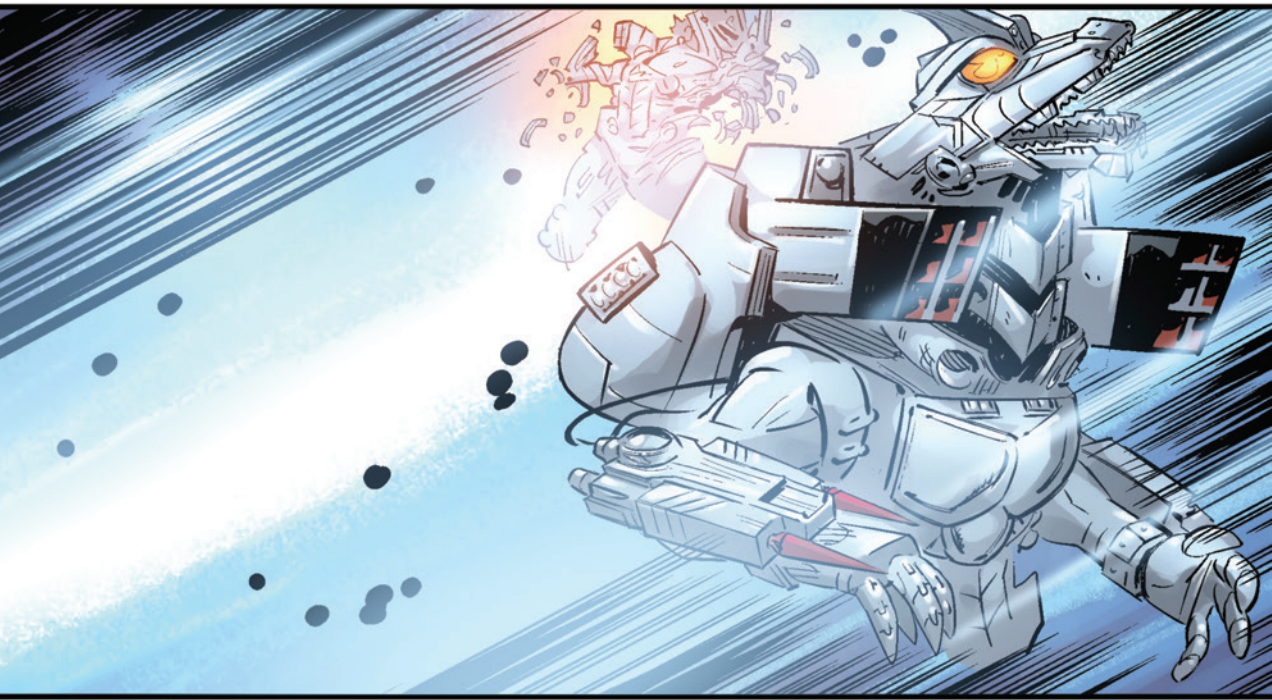
"HE'S GOING TO SWAT THEM DOWN LIKE FLIES, RIDLEY."

"Y'KNOW, ELI, YOU'VE GOT A REAL NEGATIVE STREAK LATELY."



"WELL, WHEN YOU ACCIDENTALLY CAUSE THE APOCALYPSE THAT'LL HAPPEN."

"TO BE FAIR, THE APOCALYPSE ISN'T QUITE OVER YET."

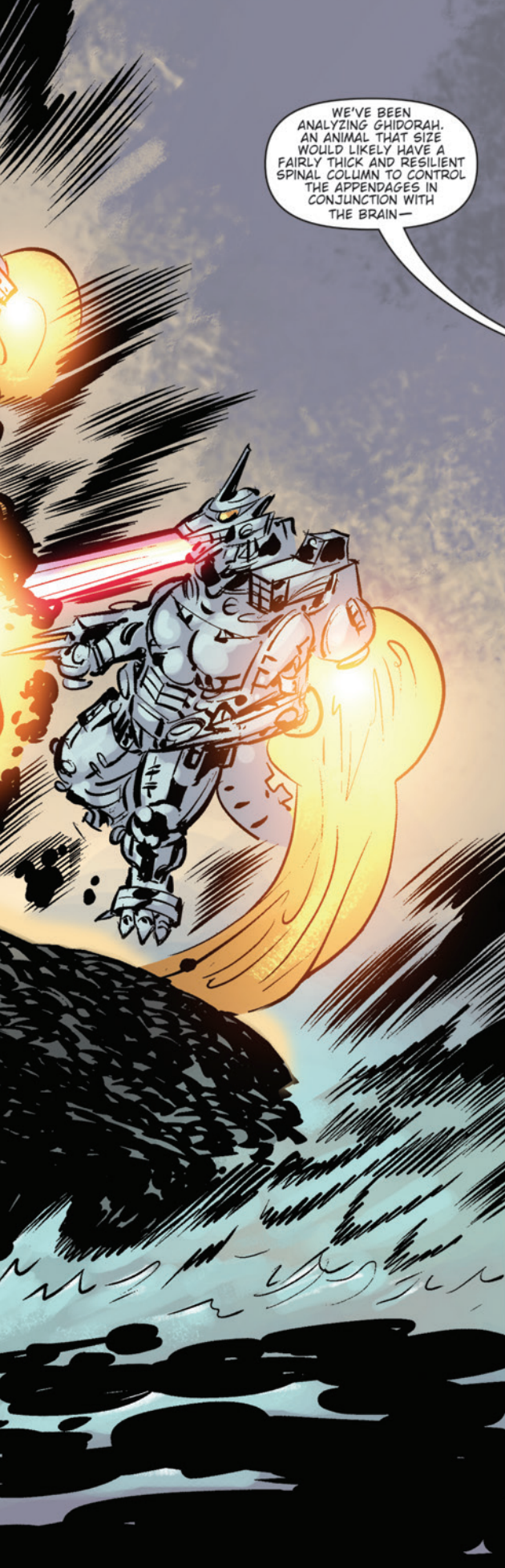


"MR. TALBERT,
WHAT'S THE
BACKUP PLAN?"

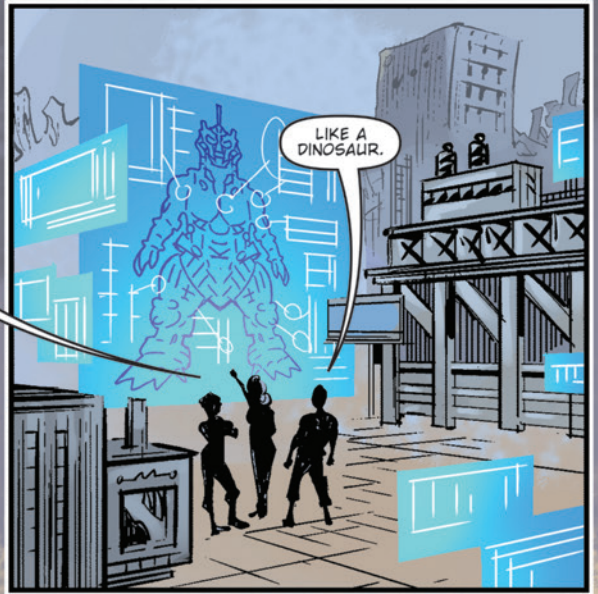
"ISHIKO, WE'RE
OUT OF BACKUP
PLANS..."

"ACTUALLY..."

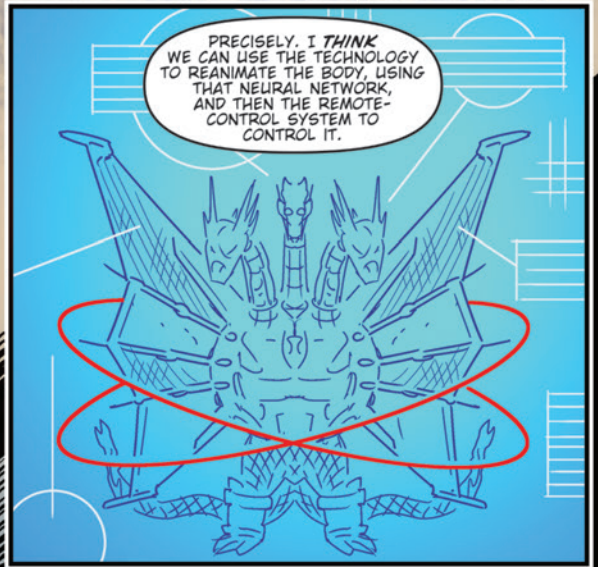




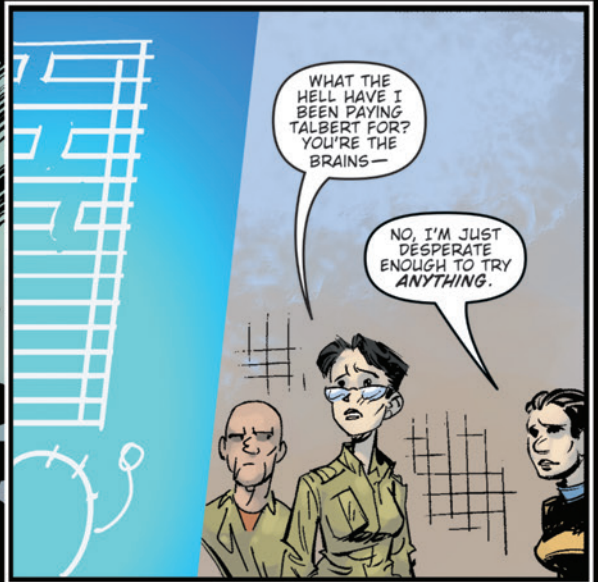
WE'VE BEEN ANALYZING GHIDORAH. AN ANIMAL THAT SIZE WOULD LIKELY HAVE A FAIRLY THICK AND RESILIENT SPINAL COLUMN TO CONTROL THE APPENDAGES IN CONJUNCTION WITH THE BRAIN—



LIKE A DINOSAUR.



PRECISELY. I *THINK* WE CAN USE THE TECHNOLOGY TO REANIMATE THE BODY, USING THAT NEURAL NETWORK, AND THEN THE REMOTE-CONTROL SYSTEM TO CONTROL IT.



WHAT THE HELL HAVE I BEEN PAYING TALBERT FOR? YOU'RE THE BRAINS—

NO, I'M JUST DESPERATE ENOUGH TO TRY ANYTHING.



HOW LONG WOULD IT TAKE TO GET IT UP AND RUNNING?

IT'S ENTIRELY THEORETICAL...

WELL, IT'S PRETTY MUCH ALL WE GOT.

I'LL SEE WHAT WE CAN DO TO HELP MOVE IT ALONG.



AND IF THIS DOESN'T WORK?

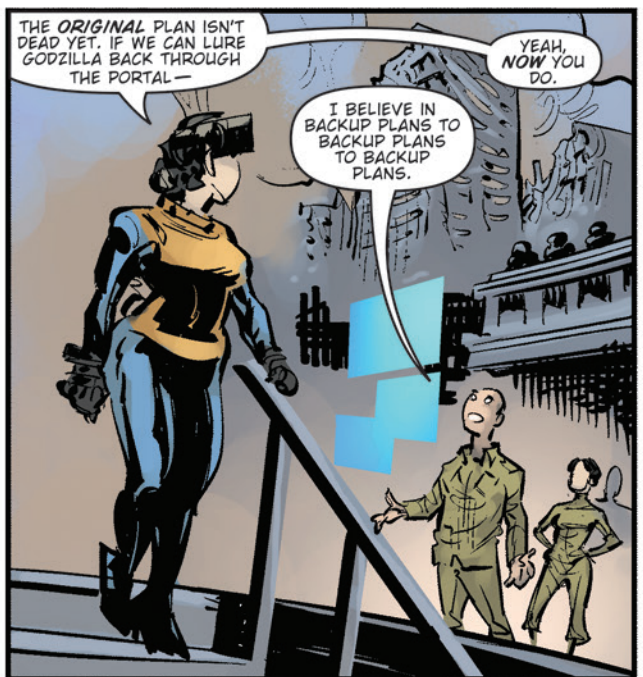
THE COWARDLY WAY.

WE CAN LOOK FOR ANOTHER DIMENSION...



RIDLEY, YOU LEAD THE SALVAGE TEAM, I'LL START ANALYZING YOUR DATA.

AND LOOKING FOR ANOTHER OPTION.



THE ORIGINAL PLAN ISN'T DEAD YET. IF WE CAN LURE GODZILLA BACK THROUGH THE PORTAL —

YEAH, NOW YOU DO.

I BELIEVE IN BACKUP PLANS TO BACKUP PLANS.



RIDLEY.
SWITCH TO
A PRIVATE
CHANNEL.

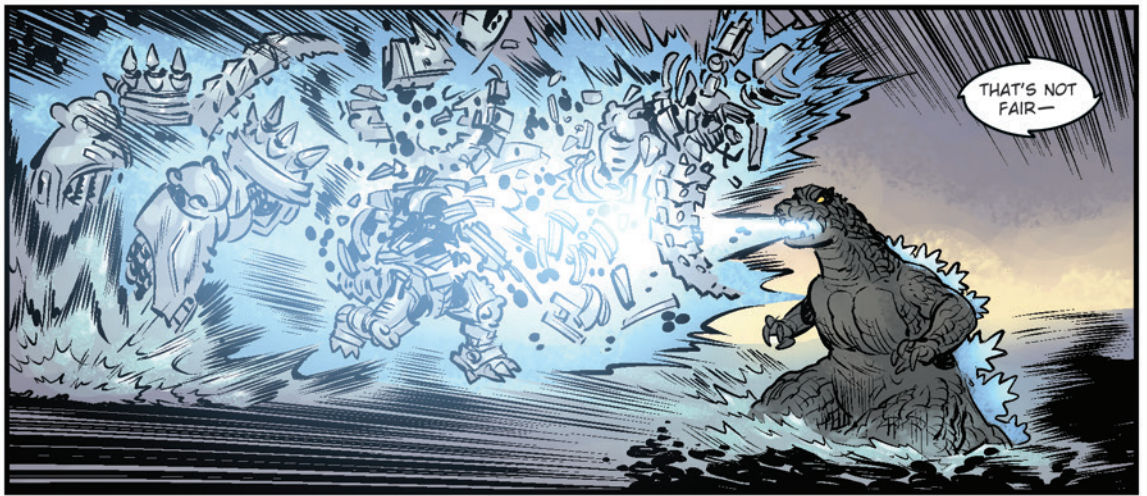
SWITCHING.

GO.

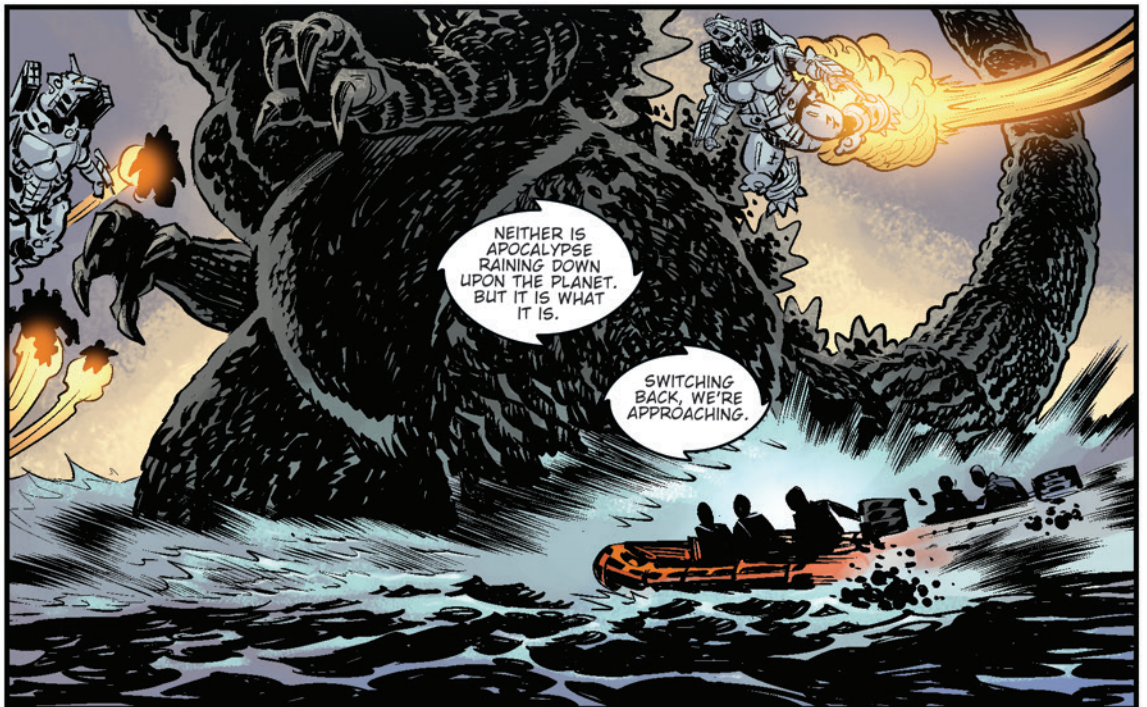


WHAT THE HELL,
RIDLEY? I THOUGHT
WE UNDERSTOOD
EACH OTHER.

Y'KNOW, ELI,
WHILE YOU WERE
LOCKED UP, I SAT
HERE AND WATCHED
THE WORLD GET
DESTROYED. BY
WORK I DID
FOR YOU.



THAT'S NOT
FAIR—



NEITHER IS
APOCALYPSE
RAINING DOWN
UPON THE PLANET.
BUT IT IS WHAT
IT IS.

SWITCHING
BACK, WE'RE
APPROACHING.