

THAT LITTLE SINKING FEELING...THAT ITCH IN THE BACK OF YOUR MIND...THAT FEELING THAT SOMEBODY IS WITH YOU, SOMEONE IS WATCHING YOU...

...THAT YOU'RE NEVER REALLY ALONE.

IT'S RIGHT.

BUT YOU DON'T UNDERSTAND WHAT'S THERE, BENEATH THE SURFACE. VERY FEW PEOPLE DO. IT'S THE OLD STUFF. THE SPOOKY STUFF.

YOU SEE...THERE'S A MAGIC UNIQUE TO EVERY CITY. DOESN'T MATTER HOW SMALL OR BIG...

THE SECOND THE NORMALS GET TO THINKING OF A CLUMP OF BUILDINGS AS A PLACE BIGGER THAN THEMSELVES, A SPARK HAPPENS IN THE FIRMAMENT...

WORTHLESS

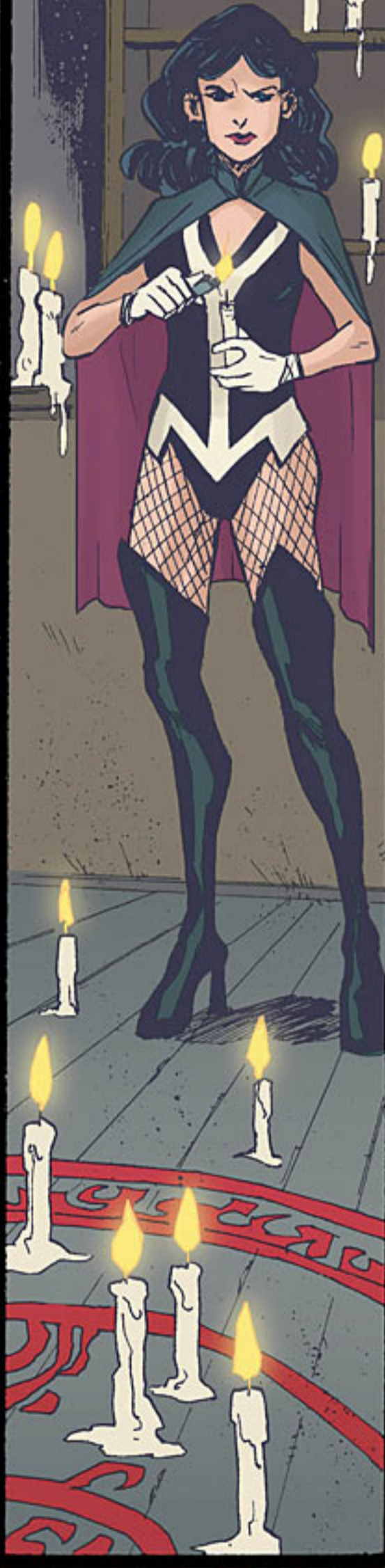
MING DOYLE & JAMES TYNION IV WRITERS
ERYK DONOVAN ARTIST RILEY ROSSMO COVER ARTIST
KELLY FITZPATRICK COLORIST TOM NAPOLITANO LETTERER
KRISTY QUINN EDITOR
CREATED BY ALAN MOORE, STEVE BISSETTE,
JOHN TOTLEBEN AND JAMIE DELANO & JOHN RIDGWAY

SOMETHING IS BORN IN THE DARK.

IT'S A KIND OF MAGIC THAT LIVES, DEEP AND PRIMAL UNDER THE SURFACE, ENCOMPASSING EVERYTHING AND EVERYONE.

IT'S THE MAGIC THAT GIVES EVERY CITY A REAL AND PALPABLE PERSONALITY...IT'S WHY WHEN THE LOCAL FOOTBALL TEAM WINS, YOU WANT TO FLIP A BLOODY CAR OVER AND SHOW HER HOW LOYAL YOU ARE...THE MAGIC IS WHAT MAKES YOU HOMESICK WHEN YOU'RE GONE TOO LONG...

IT TOUCHES EVERY PART OF YOUR SOUL, ENGLUFS IT, INTERTWINING SO YOU ARE A PART OF IT AND IT IS A PART OF YOU.

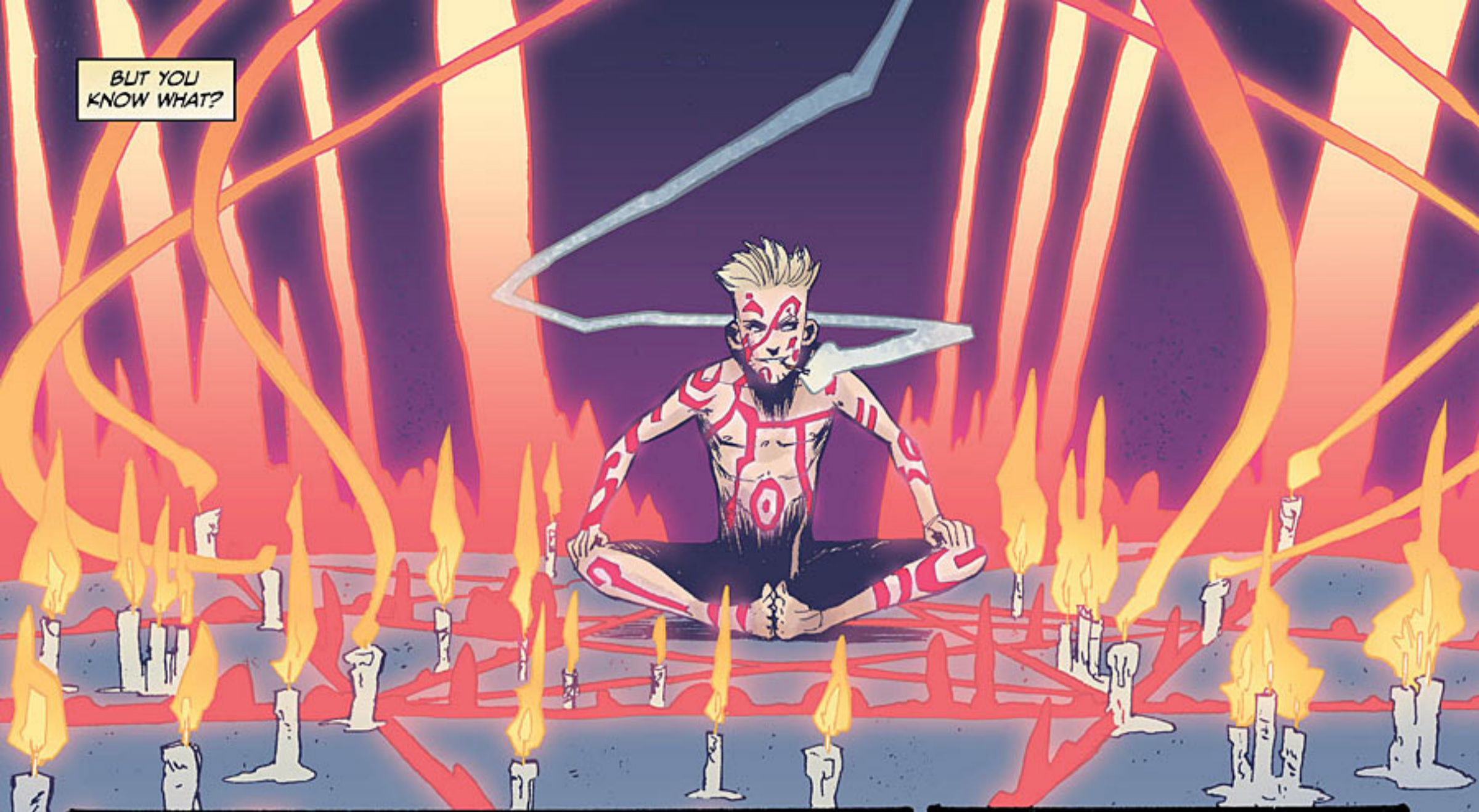


IN MAGICAL CIRCLES, IT'S ABSOLUTELY PROFANE TO EVEN CONSIDER MEDDLING WITH. EVEN THE DARKEST SORCERERS I KNOW WOULD THINK OF IT AS TABOO...

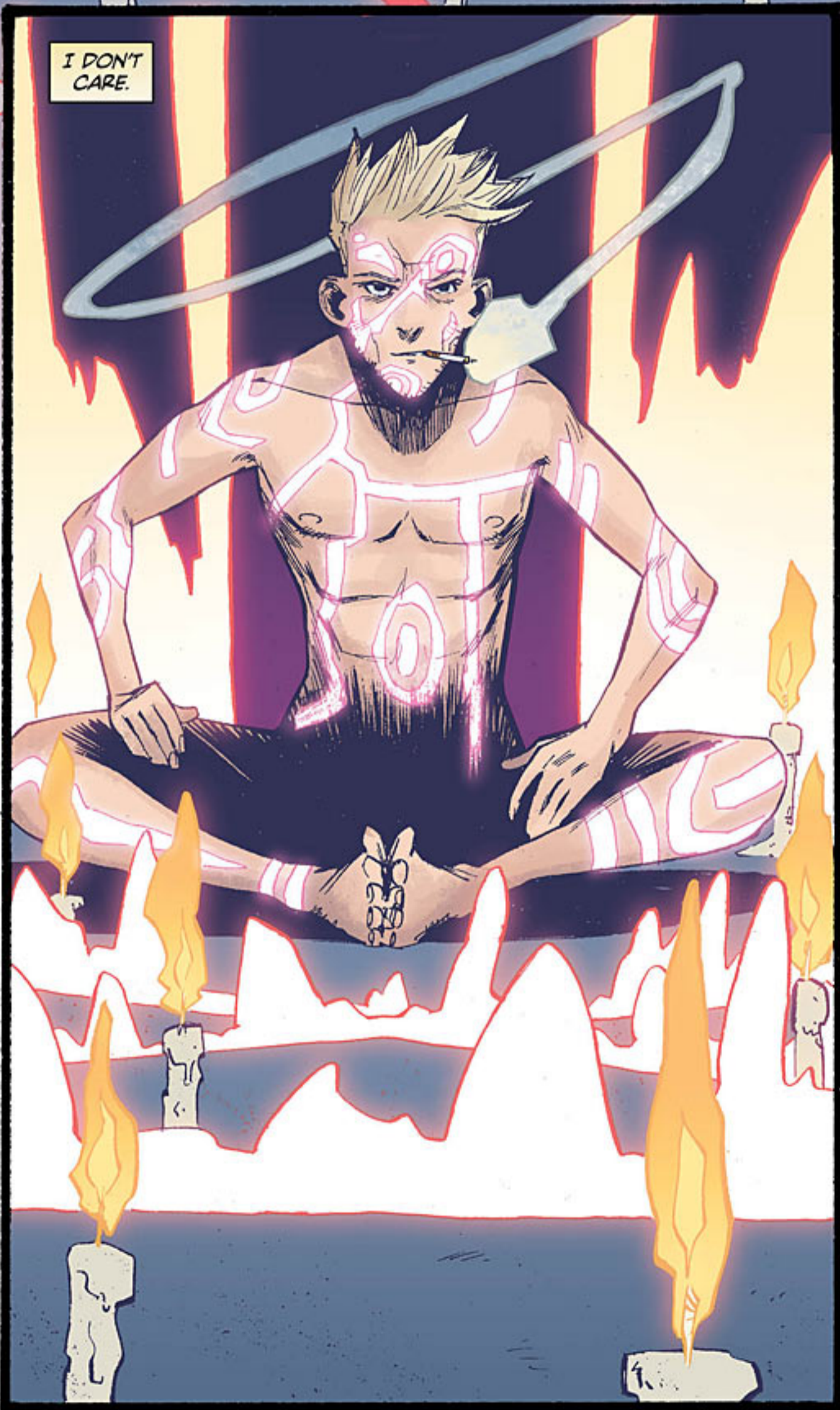
THE ONLY WRITINGS ON HOW TO DO IT ARE CENTURIES OLD, WITH WARNINGS THAT THERE MIGHT BE NO GREATER RULE IN MAGIC THAN NOT TO TAMPER WITH THIS ENERGY.



BUT YOU
KNOW WHAT?



I DON'T
CARE.



RULES ARE
STUPID.

