

TF

— CHAPTER I —
The Story of Everything

Written by Curt Pires
Illustrated by David Rubín
Colors by Michael Garland
Letters by Colin Bell

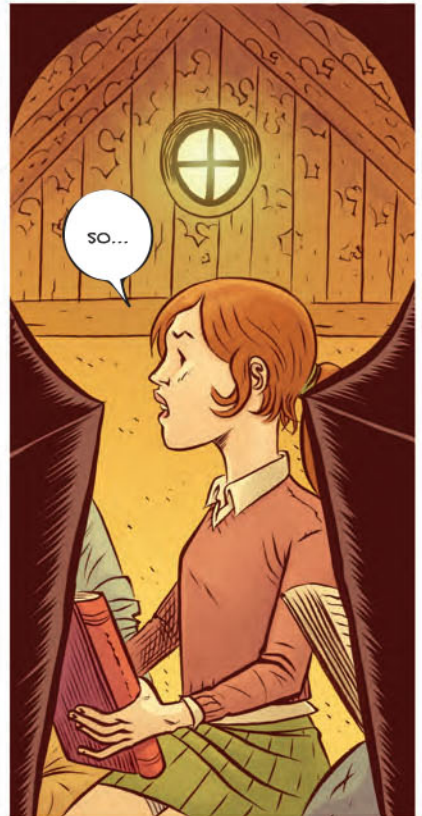
Cover by David Rubín
BOOM! Ten Years Variant Cover by Frazer Irving
Variant Cover by Tula Lotay

Designer Jillian Crab
Associate Editor Jasmine Amiri
Editor Eric Harburn

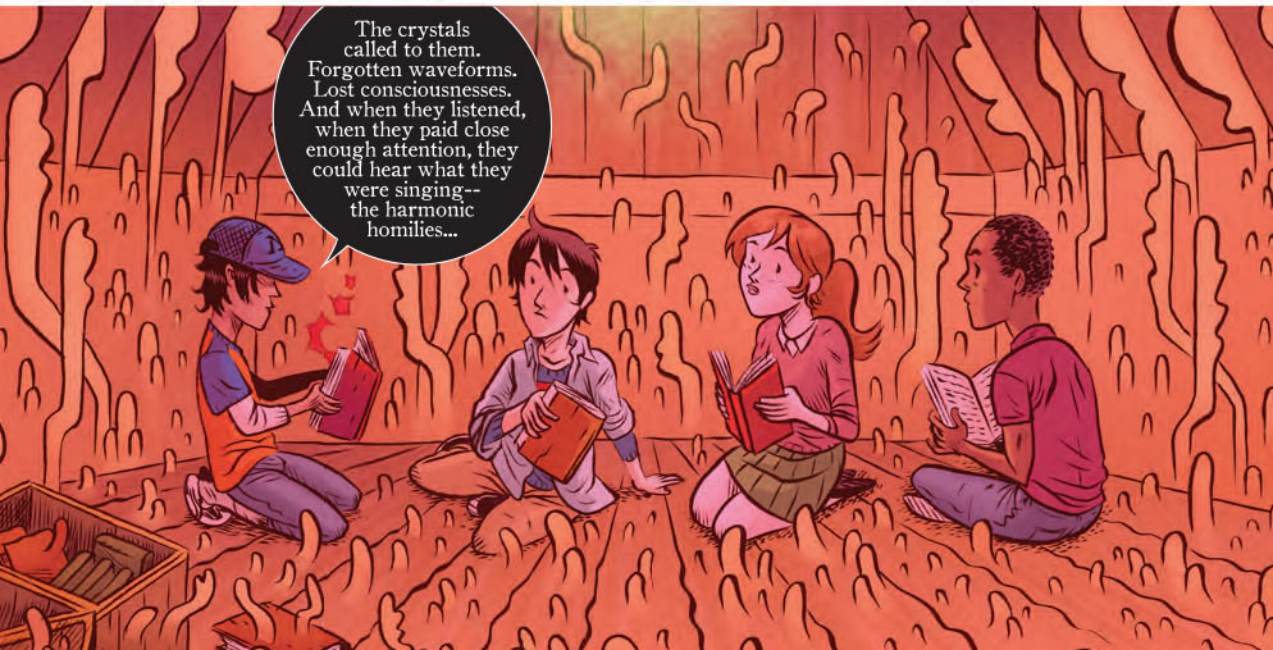
The Fiction Created by Curt Pires & David Rubín



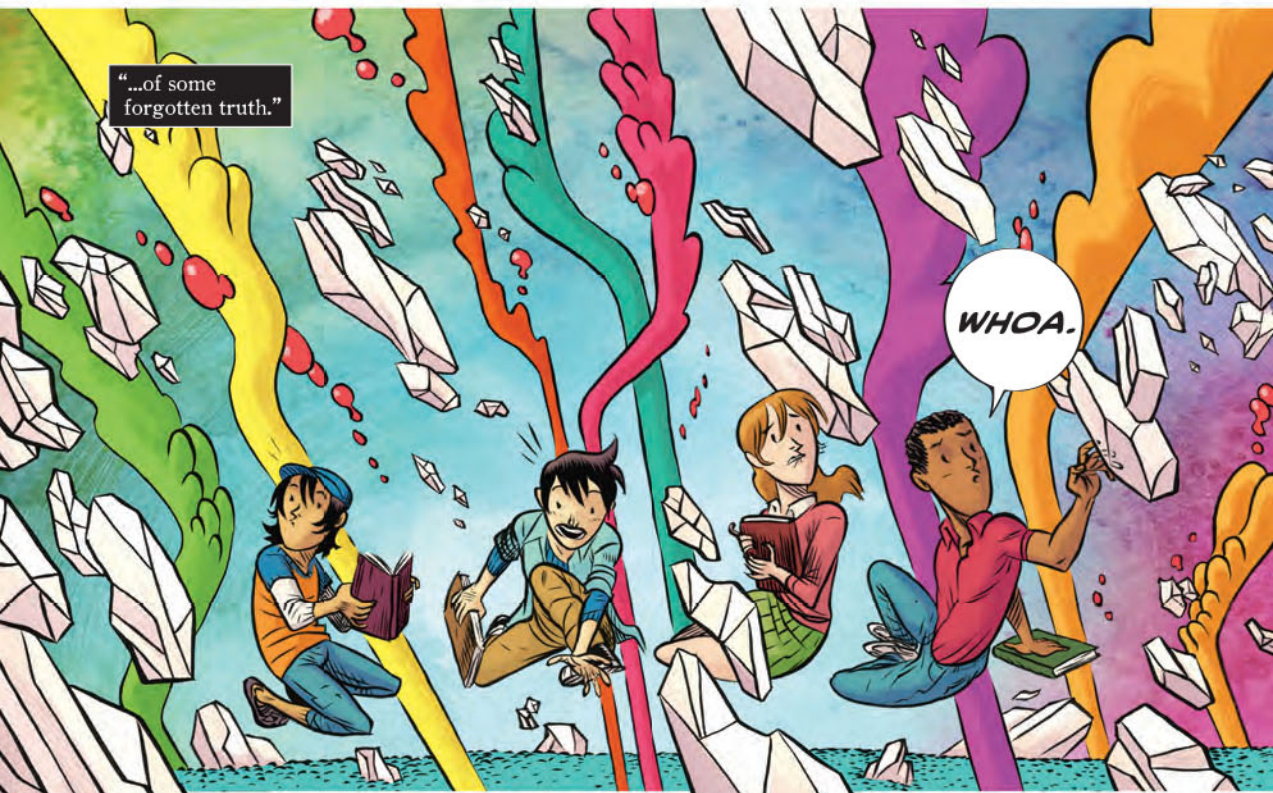
THE FICTION No. 1 (of 4), June 2015. Published by BOOM! Studios, a division of Boom Entertainment, Inc., 5670 Wilshire Boulevard, Suite 450, Los Angeles, CA 90036-5679. The Fiction is ™ & © Curt Pires. All rights reserved. BOOM! Studios™ and the BOOM! Studios logo are trademarks of Boom Entertainment, Inc., registered in various countries and categories. All characters, events, and institutions depicted herein are fictional. Any similarity between any of the names, characters, persons, events, and/or institutions in this publication to actual names, characters, and persons, whether living or dead, events, and/or institutions is unintended and purely coincidental. BOOM! Studios does not read or accept unsolicited submissions of ideas, stories, or artwork. For information regarding the CPSIA on this printed material, call: (203) 595-3636 and provide reference #RICH - 621898. PRINTED IN USA.







"...of some forgotten truth."



WHOA.



WHAT THE HELL DID YOU DO, MAN?

I DON'T KNOW, I WAS JUST--

IT WAS THE BOOK. RIGHT BEFORE WE ENDED UP HERE, YOU READ THE PASSAGE. IT--IT WAS DESCRIBING THIS PLACE.



IT BROUGHT US HERE.

AT FIRST IT WAS SCARY...

AFTER A WHILE, THOUGH, IT STOPS BEING SCARY AND JUST STARTS BEING EXCITING.



IT'S--I DON'T KNOW IF I COULD EVER DESCRIBE HOW IT FELT, BUT I'LL TRY.



IT WAS LIKE ALL THE SECONDS TURNED INTO MINUTES, AND ALL THE MINUTES TURNED INTO HOURS, AND BEFORE WE KNEW IT THE HOURS HAD TURNED INTO DAYS.



IT WAS LIKE JUST WHEN YOU THOUGHT YOU'D SEEN ALL YOU WERE EVER GOING TO SEE, ALL THERE COULD POSSIBLY BE TO EXPERIENCE...



YOU'D REALIZE YOU HADN'T EVEN SCRATCHED THE SURFACE.

